

DUCTLESS SYSTEM ACCESSORIES





DiversiTech offers a huge selection of ductless system accessories to make any installation faster and easier. From pads and mounting solutions to whips and cleaners, DiversiTech offers the products that make ductless system installation and maintenance a breeze. Check out our full line of ductless system accessories here or at **diversitech.com**.



TABLE OF CONTENTS

EQUIPMENT MOUNTING	4-7
CONDENSATE MANAGEMENT	8-9
LINE SET COVERS	10-13
LINE SETS	14
SAFETY CAPS	15
FLEXIBLE REFRIGERANT LINE	15
COIL CLEANERS	16
ELECTRICAL	17-18
COMPONENTS & ACCESSORIES	19

EQUIPMENT MOUNTING

UltraLite® Lightweight Concrete Equipment Pads

A true concrete equipment pad at the weight of plastic (about 2.5 lbs. per square foot). UltraLite® is strengthened by miles of fiber in each square foot of fiber-cement coating. This fiber allows the pad to flex instead of cracking or breaking. The textured surface prevents the condensing unit or portable generator from sliding, and allows water drainage, while the engineered expanded polystyrene (EPS) core prevents warping and provides a solid bottom to resist settling. Unaffected by soil conditions, ultraviolet (UV) light, temperature extremes, and other weather conditions.



UC1636-3

E Lite® Plastic Equipment Pads

E Lite's rugged design provides uniform and generous ribbing for optimum, self-leveling ground support without inserts. The result is a pad that is lightweight, but not too light. A subtle texture prevents unit slide and presents a classic appearance, which is enhanced by rounded edges and a concrete gray color. Each pad is molded with a size label and a symbol representing content of recycled material.



EL1838-3

EcoPad™ Black Plastic Equipment Pads

An injection molded equipment pad created from 100% recycled materials to minimize environmental impact. It does not require any additional equipment for moving and handling. EcoPad™ is resistant to impact, ultra-violet degradation and weathering (virtually impervious to climatic variations), and will not crack, flake, or warp. Drillable to permit installation of refrigerant and electrical lines under and through the pad and to allow equipment to easily secure to the pad.



EP1838-3

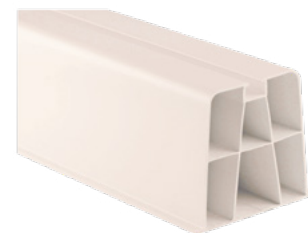
ITEM NO.	DESCRIPTION	UOM	OM
UC1636-3	UltraLite® Pad, 16 x 36 x 3, Gray	EA	30
UC2442-3	UltraLite® Pad, 24 x 42 x 3, Gray	EA	15
UC1636-2	UltraLite® Pad, 16 x 36 x 2, Gray	EA	40
EL1838-3	E Lite® Pad, 18 x 38 x 3, Gray	EA	32
EL2448-3	E Lite® Pad, 24 x 48 x 3, Gray	EA	32
EL2436-3	E Lite® Pad, 24 x 36 x 3, Gray	EA	16
EP1838-3	EcoPad™ Pad, 18 x 38 x 3, Black	EA	32
EP2436-3	EcoPad™ Pad, 24 x 36 x 3, Black	EA	16
EP2448-3	EcoPad™ Pad, 24 x 48 x 3, Black	EA	32

EQUIPMENT MOUNTING

Hef-T-Block™

An injection molded equipment pad created from 100% recycled materials to minimize environmental impact. It does not require any additional equipment for moving and handling.

ITEM NO.	DESCRIPTION	UOM	OM
230-MB14W	14" Hef-T-Block™, White, Pack of 2	PK	6
230-MB17W	17" Hef-T-Block™, White, Pack of 2	PK	6
230-MBCW	Hef-T-Block™ End Cap (White), Pack of 4	PK	25



230-MB17W

Hef-T-Foot™

The Hef-T-Foot™ is used to support small pipework, runs of cable tray, or an alternative to supporting condensing units, air source heat pumps or a variety of outdoor equipment. The Hef-T-Foot™ with strut comes in four lengths — 9.8", 15.7", 23.6", 39.4". They are manufactured from heavy duty recycled rubber and come complete with .8" x 1.6" galvanized steel strut adhered to the rubber with industrial adhesive. The rubber is strong and durable with drain slots moulded into the underside to allow standing water to flow under the foot.

ITEM NO.	DESCRIPTION	UOM	OM
FF-250-S	Hef-T-Foot™, 9.8" with 1.6" x 8" Strut	EA	1
FF-400-S	Hef-T-Foot™, 15.7" with 1.6" x 8" Strut	EA	1
FF-600-S	Hef-T-Foot™, 23.6" with 1.6" x 8" Strut	EA	1
FF-1000-S	Hef-T-Foot™, 39.4" with 1.6" x 8" Strut	EA	1
FF-250-UNI	Hef-T-Foot™, 9.8" with 1.6" x 8" Strut	EA	1



FF-250-S

Quick-Sling® Wall Brackets - Flat Wall

The QSWB1000 Condenser Wall Bracket provides a quick and safe mount that is perfectly designed for installation to a flat wall surface and can hold up to 500 lbs. It also has the flexibility to be installed in the up and out orientation or down and out.

ITEM NO.	DESCRIPTION	UOM	OM
QSWB1000	Flat Wall - Wall Bracket, Holds up to 500 lbs.	EA	1



QSWB1000

EQUIPMENT MOUNTING

Quick-Sling® Wall Bracket - Foundation Mount

This unique, 300 lb. condenser mounting bracket is designed to install directly to a foundation and still provides 7" clearance between the wall and the unit. The shelf depth is 19" and allows plenty of room for piping and service.

ITEM NO.	DESCRIPTION	UOM	OM
QSWB3000	Wall Bracket w/Rails, Heavy Duty	EA	1



QSWB3000

Quick-Sling® Wall Brackets - Siding

These hurricane rated wall brackets are strong, easy to install and are designed to be mounted into framing studs at 12" or 16" on center. These fit most mini-split models on the market today and provides the required distance between the wall and the condenser for optimal air flow. The QSWB2000 is rated for 350 lbs. and the heavy duty QSWB4000 is rated for 600 lbs. Both models are also available in 316 stainless steel.

ITEM NO.	DESCRIPTION	UOM	OM
QSWB2000	Wall Bracket w/Rail, Holds up to 350 lbs.	EA	1
QSWB2000SS	Stainless Steel Wall Bracket w/Rail, Holds up to 350 lbs.	EA	1
QSWB4000	Wall Bracket w/Rail, Holds up to 500 lbs.	EA	1
QSWB4000SS	Stainless Steel Wall Bracket w/Rail, Holds up to 500 lbs.	EA	1



QSWB2000

Hef-T-Bracket™ (Type 2)

Used for supporting condensing units, Hef-T-Brackets (Type 2) feature a cross bar that is attached to a wall, and two L-shaped brackets that are hooked and bolted into place on the cross bar. The condensing unit is mounted onto the L-shaped brackets, and fastened using the bolts and anti vibration washers provided.

*Not approved for South Florida.

ITEM NO.	DESCRIPTION	UOM	OM
230-B2M	Hef-T-Bracket™ (Type 2), Medium, 18 in.	EA	1
230-B2L	Hef-T-Bracket™ (Type 2), Large, 21 in.	EA	1



230-B2M

Quick-Sling® Mini-Split Stands

Our Quick-Sling® Mini-Split Stands provide a safe, stable platform to mount your unit on. It keeps unit elevated above lawn mowers, weed wackers, pets, snow, and flooding. The elevated height allows for ease of installation, maintenance and service.

Now available in Stainless Steel.

ITEM NO.	DESCRIPTION	UOM	OM
QSMS1201	12" High Mini-Split Stand "Wide", Holds up to 400 lbs.	EA	1
QSMS1801	18" High Mini-Split Stand "Wide", Holds up to 400 lbs.	EA	1
QSMS2401	24" High Mini-Split Stand "Wide", Holds up to 400 lbs.	EA	1



QSMS1201

EQUIPMENT MOUNTING

Quick-Sling® Mini-Split Dual Fan Stands

Our Quick-Sling® Mini-Split Dual Fan Stands provide a safe, stable platform to mount your unit on. It keeps unit elevated above lawn mowers, weed wackers, pets, snow, and flooding. The elevated height allows for ease of installation, maintenance and service.

ITEM NO.	DESCRIPTION	UOM	OM
QSMS1202	12" Dual Fan Mini-Split Stand, Holds up to 400 lbs.	EA	1
QSMS1802	18" Dual Fan Mini-Split Stand, Holds up to 400 lbs.	EA	1
QSMS2402	24" Dual Fan Mini-Split Stand, Holds up to 400 lbs.	EA	1

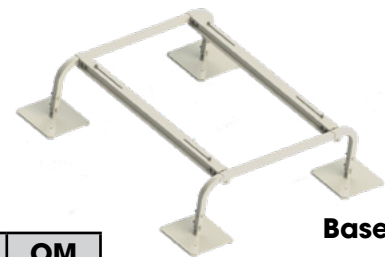


QSMS1202

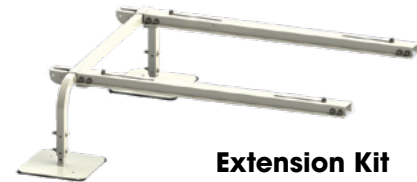
Quick-Sling® VRF/VRV Super Stand

The VRF/VRV Super Stand Equipment Stands are now simpler to order, easier to size and compatible with more equipment model families.

Description	Rail Length	12"	18"	24"	UOM	OM
Base Modules	48"	QSSB48-12	QSSB48-18	QSSB48-24	EA	1
	62"	QSSB62-12	QSSB62-18	QSSB62-24	EA	1
	74"	QSSB74-12	QSSB74-18	QSSB74-24	EA	1
Extension Kit	48"	QSSX48-12	QSSX48-18	QSSX48-24	EA	1
	62"	QSSX62-12	QSSX62-18	QSSX62-24	EA	1
	74"	QSSX74-12	QSSX74-18	QSSX74-24	EA	1



Base Module



Extension Kit

Quick-Sling® Mini-Split Double Stack Stand

Our Quick-Sling® Mini-Split Double Stack Stand provide a safe, stable platform to mount your unit on. It keeps the unit elevated above lawn mowers, weed wackers, pets, snow, and flooding. The elevated height allows for ease of installation, maintenance and service.

ITEM NO.	DESCRIPTION	UOM	OM
QSMS1203	Mini-Split Double Stack Stand, Holds up to 400 lbs. on bottom and 200 lbs. on top.	EA	1



QSMS1203

Ductless Cassette Hangers

The Ductless Cassette Hangers are an innovative bracket design that is made of lightweight aluminum to provide quick and easy installation of ductless cassettes. Only two skus are compatible with most of the ductless cassettes on the market today. The built-in adjustability allows the alignment of the unit after it has been hung.



QSCH1000

ITEM NO.	DESCRIPTION	UOM	OM
QSCH1000	Ductless Cassette Hanger - Small, Holds up to 200 lbs.	EA	1
QSCH2000	Ductless Cassette Hanger - Large, Holds up to 200 lbs.	EA	1

CONDENSATE MANAGEMENT

Condensate Drain Pans

When a mini-split system operates in heat pump mode, the outdoor coil becomes the evaporator coil. Typically, condensation generates from the evaporator coil. In certain installations, the condenser coil may be mounted overhead on brackets affixed to a wall. In these overhead applications, dripping condensation may be a nuisance. Condensate drain pans bolt onto the condenser mounting brackets, and the drain line can be plumbed to a nearby drain location. Furnished complete with all mounting hardware and drain pan outlet, condensate drain pans are available in either plastic or powder coated steel.



230-DPPL

ClearVue® Mini Ductless System Pump

Featuring super quiet operation, specifically designed for ductless system installations, and including Variable Speed and Lift and Floatless Sensor™, ClearVue® Mini is chock full of innovative features, and priced competitively.



CVMINI

Mini-Split Pumps

DiversiTech's Mini-Split Condensate Pump is a quiet, super compact, and feature rich pump that fits almost anywhere. Compatible with all brands of mini-split units. Provides 24' of lift with 6' suction lift. Pump fits easily in most line set covers and includes all needed accessories. Available in 115V and 230V versions.



CP-M115

ITEM NO.	DESCRIPTION	UOM	OM
230-DPPL	Poly Condensate Drain Pan (Large)	EA	1
230-DPPM	Poly Condensate Drain Pan (Medium)	EA	1
CVMINI	ClearVue™ Mini - Ductless System Pump	EA	6
CP-M115	Mini-Split Condensate Pump, 115V	EA	10
CP-M230	Mini-Split Condensate Pump, 230V	EA	10

CONDENSATE MANAGEMENT

Gorilla Tube® Clear Vinyl Tubing

Applications include: air conditioning and refrigeration condensate drains, condensate pump discharge lines, and humidifier overflows. Several sizes from 1/4" to 1" diameter. Non-toxic clear vinyl chloride.

Select Gorilla Tube® over standard clear vinyl tube because:

- Extra rigid design resists crimping and kinking due to durometer value of 80 (Shore A) and thicker wall
- Maximum service temperature 140°F (60°C)
- Better performance in cold weather climates



7-58P

Clear Vinyl Tubing

Clear vinyl hose applications include: air conditioning and refrigeration condensate drains, condensate pump discharge lines and humidifier overflows.



7-58

Mini-Split Condensate Drain Line

A unique drain line for mini-split units. This large diameter drain line is typical for mini-split installations. Furnished in 160 feet lengths with cut marks every 3.28 feet. Accommodates 5/8" and 3/4" connections.



230-DL16

Mini-Split Drain Adapters

Mini-Split fan units — either ceiling cassettes or wall cassettes — typically have a unique (metric) drain line fitting. DiversiTech's adapters convert this metric fitting to standard drain line tubing sizes.



230-DLF16

ITEM NO.	DESCRIPTION	UOM	OM
7-58P	Gorilla Tube® Clear Vinyl Tube, 5/8 in. ID	EA	100'
7-34P	Gorilla Tube® Clear Vinyl Tube, 5/8 in. ID	EA	100'
7-58	Clear Vinyl Tube, 5/8 in. ID	EA	100'
7-34	Clear Vinyl Tube, 3/4 in. ID	EA	100'
230-DL16	Mini-Split Drain Line, 5/8 in. ID	EA	160'
230-DL16-20	Mini-Split Drain Line, 5/8 in. ID	EA	20'
230-DLFY	Mini-Split Drain Line Y	EA	1
230-DLF16	16mm Mini-Split Drain Line Adapter	EA	1
230-DLF18	18mm Mini-Split Drain Line Adapter	EA	1
230-DLF20	20mm Mini-Split Drain Line Adapter	EA	1
230-DLF25	25mm Mini-Split Drain Line Adapter	EA	1
230-DLF32	32mm Mini-Split Drain Line Adapter	EA	1

LINE SET COVERS

SpeediChannel®

The DiversiTech SpeediChannel® is available in three widths, all in 6-1/2 feet lengths. Includes a pack of SpeediClips™.



230-D3

SpeediChannel® Accessories

A variety of accessories that are complementary or required for installing DiversiTech's SpeediChannel® system.



230-DCLIP

Wall Penetration Covers

Wall sleeves and penetration covers are used to transition from the SpeediChannel® system to a through wall penetration. The wall sleeve creates a neat hole through the wall, and the line set is covered by the wall cover. DiversiTech's wall covers are designed to allow for easy installation - even after the line set has been installed. A unique hooking and fastening arrangement allows for quick and easy installation. Each wall cover is individually packed, and is furnished complete with stainless steel screws to attach the wall cover to the base. Three screws (supplied by others) are needed to fasten the wall cover to whatever type of wall construction the system is being installed on.



230-WC3

ITEM NO.	DESCRIPTION	UOM	OM
230-D3	3 in. Line Set Cover	EA	6
230-D3W	3 in. Line Set Cover - White	EA	6
230-D4	4 in. Line Set Cover	EA	6
230-D4W	4 in. Line Set Cover - White	EA	6
230-DCLIP	SpeediClip™, Pack of 50	PK	1
230-DCLIP-10	SpeediClip™, Pack of 10	PK	1
230-WC3	3 in. Wall Penetration Cover	EA	10
230-WC3W	3 in. Wall Penetration Cover - White	EA	10
230-WC4	4 in. Wall Penetration Cover	EA	10
230-WC4W	4 in. Wall Penetration Cover - White	EA	10

LINE SET COVERS

Union Coupling

Used for joining two pieces of SpeediChannel® — each cover being the same size. Each coupling is individually packed, and is furnished complete with stainless steel screws.



230-CP3

Adjustable Flat Bend

Adjustable flat bends flex from 45 to 90 degrees and make it easy to route the SpeediChannel® around an obstacle. Each adjustable bend is individually packed and includes stainless steel screws.



230-AFB3

Flex Joint

An accordion style piece of SpeediChannel®, the flex joint can be extremely flexible routing a SpeediChannel® system around virtually any type of obstacle. Each joint is 20" long and can be combined together for longer flex runs. Unlike competitor systems, the DiversiTech flex joint does NOT require the use of a union coupling. The DiversiTech flex joint slides tightly inside the SpeediChannel® system.



230-FJ3

90° Long Radius Bend

90° long radius flat bends are used to route the SpeediChannel® around an obstacle. The long radius of the elbow allows a gentle bending radius on the copper line set. Each elbow is individually packed, and is furnished complete with stainless steel screws.



230-LFB3

ITEM NO.	DESCRIPTION	UOM	OM
230-CP3	3 in. Union Coupling	EA	10
230-CP3W	3 in. Union Coupling - White	EA	10
230-CP4	4 in. Union Coupling	EA	10
230-CP4W	4 in. Union Coupling - White	EA	10
230-AFB3	3 in. Adjustable Flat Bend	EA	10
230-AFB3W	3 in. Adjustable Flat Bend - White	EA	10
230-AFB4	4 in. Adjustable Flat Bend	EA	10
230-AFB4W	4 in. Adjustable Flat Bend - White	EA	10
230-FJ3	3 in. Flex Joint	EA	10
230-FJ3W	3 in. Flex Joint - White	EA	10
230-FJ4	4 in. Flex Joint	EA	10
230-FJ4W	4 in. Flex Joint - White	EA	10
230-LFB3	3 in. Long Radius Bend	EA	10
230-LFB3W	3 in. Long Radius Bend - White	EA	10
230-LFB4	4 in. Long Radius Bend	EA	10
230-LFB4W	4 in. Long Radius Bend - White	EA	10

LINE SET COVERS

Duct End

The duct end is used to terminate a run of SpeediChannel® to a small opening – just large enough for the line set and condensate drain line to pass through. Gives a neat/clean installation.



230-DE3

90° Inside Elbow

90° inside elbows are used to route the SpeediChannel® around an inside corner. Each elbow is individually packed, and is furnished complete with stainless steel screws.



230-EB3

90° Flat Bend

90° flat bends are used to route the SpeediChannel® around an obstacle. Each bend is individually packed, and is furnished complete with stainless steel screws.



230-FB3

Line Set Cover Cutter

The 230-CUTTER is designed to easily cut lineset covers that protect line sets and insulations in HVAC applications. The 230-CUTTER has a ratcheting cutting blade that makes cutting lineset covers easy and clean. It has cutting capacity for various duct sizes, ranging from 1.38" x 1.18" up to 3.54" x 2.55".



230-CUTTER

ITEM NO.	DESCRIPTION	UOM	OM
230-DE3	3 in. Duct End	EA	10
230-DE3W	3 in. Duct End - White	EA	10
230-DE4	4 in. Duct End	EA	10
230-DE4W	4 in. Duct End - White	EA	10
230-EB3	3 in. Inside Elbow	EA	10
230-EB3W	3 in. Inside Elbow - White	EA	10
230-EB4	4 in. Inside Elbow	EA	10
230-EB4W	4 in. Inside Elbow - White	EA	10
230-FB3	3 in. 90° Flat Bend	EA	6
230-FB3W	3 in. 90° Flat Bend - White	EA	6
230-FB4	4 in. 90° Flat Bend	EA	6
230-FB4W	4 in. 90° Flat Bend - White	EA	6
230-CUTTER	Line Set Cover Cutter	EA	6

LINE SET COVERS

SpeediChannel® Flex Hose Kit

A flexible hose kit of SpeediChannel® that protects the line set from the condensing unit to the wall. Also provides a quick easy connection between two lengths of channel over or around obstacles. The kit comes with everything needed for a clean professional installation.



230-FH3-KIT

Universal Pump Elbow Kit

The Universal Pump Elbow lets an installer use any mini pump of their choice and install it with SpeediChannel®. Includes pump elbow and reservoir mounting brackets to fit most mini-split pumps.



230-PFB3

SpeediChannel® Kits

The SpeediChannel® Fitting Kit provides a simple mix of the basic fittings used in a typical SpeediChannel® installation job. Included are one coupling, one wall penetration, one inside elbow, one long radius flat bend, and one pack of the SpeediClips™ and 11" cable ties. The 230-IKC3 and 230-IKC4 Installation Kits include three 48" pieces of channel and selected fittings.



230-IK3

ITEM NO.	DESCRIPTION	UOM	OM
230-FH3-KIT	3 in. Flex Hose Kit	EA	1
230-FH3W-KIT	3 in. Flex Hose Kit - White	EA	1
230-FH4-KIT	4 in. Flex Hose Kit	EA	1
230-FH4W-KIT	4 in. Flex Hose Kit - White	EA	1
230-PFB3	Universal Pump Elbow Kit	EA	1
230-IK3	3 in. Fittings Kit	EA	1
230-IK3W	3 in. Fittings Kit - White	EA	1
230-IK4	4 in. Fittings Kit	EA	1
230-IK4W	4 in. Fittings Kit - White	EA	1
230-IKC3	3 in. Installation Kit w/3 48 in. Channels	EA	1
230-IKC3W	3 in. Installation Kit w/3 48 in. Channels - White	EA	1
230-IKC4	4 in. Installation Kit w/3 48 in. Channels	EA	1
230-IKC4W	4 in. Installation Kit w/3 48 in. Channels - White	EA	1



230-IKC3

LINE SETS

Line Sets

DiversiTech® Line Sets are individually packaged in sturdy corrugated cardboard, designed and tested for individual parcel shipment. Line Sets are designed for air conditioning and refrigeration systems. The copper tube is refrigeration grade tubing to ASTM B280. The suction line is pre-insulated with Armaflex AP pipe insulation. This insulation is a black flexible elastomeric thermal insulation. The expanded closed-cell structure makes it an efficient insulation. It is manufactured without the use of CFC's, HFC's or HCFC's. AP Armaflex contains Microban® antimicrobial product protection for added defense against mold on the insulation. DiversiTech Mini-Split Line Sets are similar to Standard Line Sets but come with additional insulation on the liquid line and flared line ends. Copper tubing complies with ASTM B280 for Seamless Copper Tube for ACR. AP Armaflex insulation meets ASTM C534, Type I – Tubular Grade 1, ASTM E84, NFPA 255, UL723, CAN/ULC S102, UL94 5V-5A, V-O (E55798), NFPA 90A/90B, UL181, ASTM G21/C1338, ASTM G22, ASTM D1056 2B1, MIL-P-15280J form T, MIL-C-3133C grade SBE3, MEA 96-85-M, and City of LA RR7642.



D40880250B3B6

ITEM NO.	DESCRIPTION	UOM	OM
D40880250B3B6	25 LGH, 3/8 in IW, 1/2 in. SL, 1/4 in. LL	EA	1
D40680250B3B6	25 LGH, 3/8 in IW, 3/8 in. SL, 1/4 in. LL	EA	1
D61080250B3B6	25 LGH, 3/8 in IW, 5/8 in. SL, 3/8 in. LL	EA	1
D40620500B3B6	50 LGH, 1/2 in IW, 3/8 in. SL, 1/4 in. LL	EA	1
D40820500B3B6	50 LGH, 1/2 in IW, 1/2 in. SL, 1/4 in. LL	EA	1
D41080500B3B6	25 LGH, 1/2 in IW, 1/2 in. SL, 1/4 in. LL	EA	1
D41080250B3B6	25 LGH, 3/8 in IW, 5/8 in. SL, 1/4 in. LL	EA	1

SAFETY CAPS

Sentry™ Refrigerant Locking Caps

The Sentry™ Refrigerant Locking Caps are a quick and easy way to comply with the IRC and IMC codes requirement that all outdoor access ports on A/C and refrigerant equipment have to be tamper resistant. This cap is anodized in red color for easy identification of R-410 refrigerant. It is designed for 5/16" access ports typically used on mini-splits and European styles of A/C systems. An O-ring seal is also pre-installed to prevent leaks.



RSC-RED-02-E

ITEM NO.	DESCRIPTION	UOM	OM
RSC-RED-02-E	5/16 in., Red, 2 Pack	PK	1
RSC-RED-04K-E	5/16 in., Red, 4 Pack w/Universal Key	PK	1
RSC-RED-10-E	5/16 in., Red, 10 Pack	PK	1
RSC-RED-50K-E	5/16 in., Red, 50 Pack w/2 Universal Keys	PK	1

FLEXIBLE REFRIGERANT LINE

Flexible Refrigerant Line

Flexible Refrigerant Line, with an installed flare nut, allows a kink-free connection from the mini-split wall unit to the line set for easier and faster installation.



FRL38-F

ITEM NO.	DESCRIPTION	UOM	OM
FRL12-F	Flexible Refrigerant Line - 1/2 in. x 36 in.	EA	11
FRL14-F	Flexible Refrigerant Line - 1/4 in. x 36 in.	EA	15
FRL38-F	Flexible Refrigerant Line - 3/8 in. x 36 in.	EA	14

COIL CLEANERS

Triple-D® Universal Coil Cleaner

Triple-D® is the ultimate universal coil cleaner that can be used on condensers, evaporators, microchannels, roof-top units, and mini-split applications. The triple active synergistic highly effective solution is formulated to remove a broad range of soils while degreasing and deodorizing. It is ideal for cleaning most metals including aluminum and copper while extending equipment life and diminishing the potential for refrigerant leaks. Using 75% less than comparable products, it reduces the amount of solution needed to clean. Triple-D® is biodegradable, NSF approved and available in seven different packaging configurations.



TRIPLE-D



TRIPLE-D-AER

Eco-Coil™ Environmentally Friendly Coil Cleaner

Eco-Coil™ is an environmentally friendly no rinse non-corrosive cleaner ideal for evaporator and condenser coils, electronic and permanent filters, fan blades, grilles, mini-split and microchannel applications. Eco-Coil™ quickly cleans away dirt, dust, and deposits while deodorizing with no harmful risks to animal, aquatic or plant life. Tested to provide the highest level of performance, Eco-Coil™ not only reduces the number of products required to clean but also has different water mixture ratios to maximize solution usage. Furthermore, it brightens, biodegradable, NSF approved, and meets the EPA's Design for the Environment Alternative Program as a "green" product.



ECO-COIL

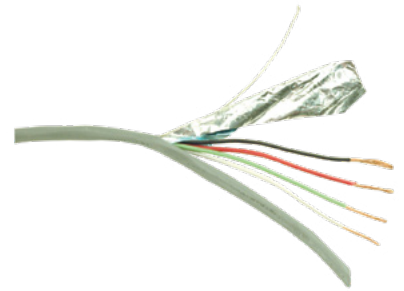


ECO-COIL-AER

ITEM NO.	DESCRIPTION	UOM	OM
TRIPLE-D	Triple-D® - 1 Gallon Concentrate (6:1)	EA	4
TRIPLE-D-AER	Triple-D® - 19 oz. Aerosol	EA	12
ECO-COIL	Eco-Coil™ - 1 Gallon Container	EA	4
ECO-COIL-AER	Eco-Coil™ - 19 oz. Aerosol	EA	1

Wire for Mini-Split Installation

Class 2 thermostat wire for indoor wiring needs. Soft drawn bare copper wire, semi-rigid PVC insulation and PVC overall jacket. Packaged on aluminum spool.



230-18-4

Disconnectors - Metal Case

Fused model designed with fuses in pull out handle for easy replacement. The line, load, and ground terminals are aligned for ease of wiring. This product has a reversible door which opens to either the left or right. The side open door opens more than 180 degrees for maximum access and has a full dead front. The fused models have indicator lights for blown fuses. This is rain tight and sleet resistant. The UL Listed number is IRF9, NEMA Type 3R and the US Patent is 6,630,637.



DDS-60

DiversiWhips

Liquid tight flexible conduit system. A labor saving convenience kit for A/C unit hookup. Also use for heat pumps, refrigeration, hot tubs, swimming pools and outdoor lighting. Three distinct wire colors for ease of hook up. 1 straight and 1 90 degree metallic or non-metallic connector. 90 degree connector is removable for straight connections. (Second straight connector not included.) U.L. and C.U.L Listed.



6-12-4NM

ITEM NO.	DESCRIPTION	UOM	OM
230-18-4	18-4 Stranded Shielded CL3R, 50' per Roll	EA	4
230-16-2	16-2 Stranded Shielded CL3R, 50' per Roll	EA	4
230-14-4	14-4 Stranded Non-Shielded CL3R, 50' per Roll	EA	4
230-14-4S	14-4 Stranded Shielded CL3R, 50' per Roll	EA	4
230-14-7	14-7 Stranded Non-Shielded CL3R, 50' per Roll	EA	4
DDS-60	60A Fusible Disconnect Switch	EA	10
DDS-60U	60A Non-Fusible Disconnect Switch	EA	10
DDS-30	30A Fusible Disconnect Switch	EA	10
6-12-4NM	1/2 X 4' #10 THHN Wire - Non-Metallic Connectors	EA	6
6-12-6NM	1/2 X 6' #10 THHN Wire - Non-Metallic Connectors	EA	6
6-34-4NM	3/4 X 4' #8 THHN Wire - Non-Metallic Connectors	EA	6
6-34-6NM	3/4 X 6' #8 THHN Wire - Non-Metallic Connectors	EA	6

Dual Element Fuses

Provides time delay for temporary over current conditions and motor running protection for heating and air conditioning equipment. Eliminates unnecessary maintenance from harmless overloads. U.L. Class RK 5, Standard for Safety 198E, Current Limiting Fuses, Interrupting Rating 200,000 Amps. rms. A.C.



7-CRNR60

Surge-Trap® Type 1 STXH

The most compact of the STX series offering, the Surge-Trap® Type 1 STXH meets requirements for UL1449 4th Edition and is suitable for any 120/240VAC split phase application. The STXH Series SPD features TPMOV® technology inside making it the safest product available in its category. Its compact size, performance and reliability are especially ideal for HVAC applications and direct mounting to air condition disconnect switches.



STXH240S05

HVAC Mini-Split Wiring Solutions

Southwire® is a market leader with its EZ-IN™ Mini-Split cable designed specifically for mini-split installations. EZ-IN™ Mini-Split cable, available in both shielded and non-shielded configurations, has brought ease of installation and savings to HVAC mini-split installations by eliminating the use of conduit or cable trays. Now, Southwire has enhanced its offering with connectors and tools specifically designed with mini-split installations in mind.



59351202

ITEM NO.	DESCRIPTION	UOM	OM
7-CRNR60	Dual Element Fuse, 250V, 60 Amps	EA	10
7-CRNR30	Dual Element Fuse, 250V, 30 Amps	EA	10
STXH240S05	Type 1 Surge Protector, 50kA, 240/120V Split Phase	EA	1
59351202	EZ-IN™ Shielded Mini-Split Cable, 14-4 Stranded, 600V, 250FT Reel	EA	1
59351203	EZ-IN™ Shielded Mini-Split Cable, 14-4 Stranded, 600V, 50FT Bag	EA	1
64235201	EZ-IN™ Shielded Mini-Split Cable Liquid Tight Straight Connector, 1/2" Hub Size	EA	25
64275801	EZ-IN™ Shielded Mini-Split Cable Liquid Tight 90 Degree Connector, 1/2" Hub Size	EA	15

COMPONENTS & ACCESSORIES

Brass Adapters

The MSA-45 is used on the new R-410 Mini-Split systems that have the larger unique fitting on the service valve. The description of that fitting is 1/2" Acme Male-20 UN. This adapter will screw onto the 1/2" Acme Male-20 UN fitting and allow you to connect a standard 1/4" service hose to it.



MSA-45

LINESET BOX™

The LINESET BOX™ is a rough-in box for new construction line set protection for all types of HVAC installations. The architecturally pleasing and professional looking LINESET BOX™ is easy to install and provides superior protection of refrigerant line sets and condensate drain lines. Provides a clean termination point for new construction projects and reserves the bay for the HVAC system installation. The Line Set Box™ also protects the lineset from damage during construction. It helps to eliminate damage such as kinks that can drastically increase HVAC installation time.



LSB10-W

AC Security Cages

These DiversiTech manufactured, weather-resistant, steel mesh guards offer a safe solution from theft, vandalism and accidental damage of your expensive air conditioning and air source heat pump. Ideal for all manufacturers of air conditioners and heat pumps.



CG-U-S

ITEM NO.	DESCRIPTION	UOM	OM
MSA-45	1/4" Male flare x 1/2" – 20 UNF Female	EA	1
LSB10-W	LINESET BOX™ - White	EA	1
LSB10-BL	LINESET BOX™ - Black	EA	1
CG-U-S	AC Security Cage - Small, 27 in. x 41 in. x 23.6 in.	EA	1
CG-U-M	AC Security Cage - Med., 45 in. x 41 in. x 23.6 in.	EA	1
CG-U-L	AC Security Cage - Large, 63 in. x 41 in. x 23.6 in.	EA	1



DiversiTech Corporation
3039 Premiere Parkway
Suite 600
Duluth, GA 30097
P 800.995.2222
F 678.542.3700

DOC155069
©2019 DiversiTech Corp.
www.diversitech.com