



### 3. Radiant Heating/Cooling, Snow and Ice Melting Product Catalog

# Contents

1. RAUPEX® O <sub>2</sub> Barrier Pipe	3.3
2. Radiant Heating Plate Systems	3.5
3. Radiant Heating Panel Systems	3.6
4. Radiant Heating Mat Systems	3.7
5. PRO-BALANCE® Stainless Steel Manifolds	3.9
6. PRO-BALANCE Brass Manifolds	3.13
7. PRO-BALANCE Manifold Accessories	3.18
8. Zone Controls and Thermostats	3.22
9. EVERLOC+ Compression-sleeve System	3.26
10. RAUPEX Compression Nut Fittings	3.33
11. Compression Nut Ball Valves	3.34
12. Copper Manifolds	3.35
13. Installation Accessories	3.36
14. PEX Pipe Installation Tools	3.40
15. Electronic Controls	3.45
16. Mixing Valves	3.47
17. Hydronic Accessories	3.49



For updates to this publication and the most current technical instructions, safety information and manufacturer's recommendations, visit [na.rehau.com/resourcecenter](http://na.rehau.com/resourcecenter)

# 1. RAUPEX O<sub>2</sub> barrier pipe

RAUPEX O<sub>2</sub> barrier pipe is manufactured using REHAU's high-pressure peroxide method for crosslinked polyethylene (PEXa). RAUPEX O<sub>2</sub> barrier pipe has a co-extruded oxygen diffusion barrier that exceeds the strict requirements of DIN 4726. All RAUPEX O<sub>2</sub> barrier pipe meets or exceeds the requirements of ASTM F876, CSA B137.5 and PPI TR-3. RAUPEX O<sub>2</sub> barrier pipe also complies with the requirements of the CSA B214 installation code for hydronic heating systems. RAUPEX O<sub>2</sub> barrier pipe is manufactured by REHAU in a plant using a quality management system that is certified to ISO 9001.



## 3/8 in. RAUPEX O<sub>2</sub> Barrier Pipe

Article No.	Description	Package Quantity	Unit Weight		Minimum Order
			kg	lb	
136008-500	3/8 in. RAUPEX O <sub>2</sub> Barrier Pipe, 500 ft coil (152.4 m)	500 ft	10.5	23.1	1 coil
136008-000	3/8 in. RAUPEX O <sub>2</sub> Barrier Pipe, 1000 ft coil (304.8 m)	1000 ft	21.0	46.2	1 coil

## 1/2 in. RAUPEX O<sub>2</sub> Barrier Pipe

Article No.	Description	Package Quantity	Unit Weight		Minimum Order
			kg	lb	
136031-300	1/2 in. RAUPEX O <sub>2</sub> Barrier Pipe, 300 ft coil (91.4 m)	300 ft	7.8	17.2	1 coil
136031-500	1/2 in. RAUPEX O <sub>2</sub> Barrier Pipe, 500 ft coil (152.4 m)	500 ft	13.1	28.9	1 coil
136031-000	1/2 in. RAUPEX O <sub>2</sub> Barrier Pipe, 1000 ft coil (304.8 m)	1000 ft	26.3	57.9	1 coil
136031-150	1/2 in. RAUPEX O <sub>2</sub> Barrier Pipe, 500 ft (152.4 m)	5 (100 ft) coils/box	13.1	28.9	1 box

## 5/8 in. RAUPEX O<sub>2</sub> Barrier Pipe

Article No.	Description	Package Quantity	Unit Weight		Minimum Order
			kg	lb	
136880-300	5/8 in. RAUPEX O <sub>2</sub> Barrier Pipe, 300 ft coil (91.4 m)	300 ft	11.02	24.3	1 coil
136880-400	5/8 in. RAUPEX O <sub>2</sub> Barrier Pipe, 400 ft coil (121.8 m)	400 ft	16.3	35.9	1 coil
136880-500	5/8 in. RAUPEX O <sub>2</sub> Barrier Pipe, 500 ft coil (152.4 m)	500 ft	18.37	40.5	1 coil
136880-155	5/8 in. RAUPEX O <sub>2</sub> Barrier Pipe, 750 ft (228.6 m)	5 (150 ft) coils/box	27.6	60.7	1 box
136880-000	5/8 in. RAUPEX O <sub>2</sub> Barrier Pipe, 1000 ft coil (304.8 m)	1000 ft	35.9	79.1	1 coil

## 3/4 in. RAUPEX O<sub>2</sub> Barrier Pipe

Article No.	Description	Package Quantity	Unit Weight		Minimum Order
			kg	lb	
136051-100	3/4 in. RAUPEX O <sub>2</sub> Barrier Pipe, 100 ft coil (30.5 m)	100 ft	4.9	10.9	1 coil
136051-300	3/4 in. RAUPEX O <sub>2</sub> Barrier Pipe, 300 ft coil (91.4 m)	300 ft	14.7	32.4	1 coil
136051-500	3/4 in. RAUPEX O <sub>2</sub> Barrier Pipe, 500 ft coil (152.4 m)	500 ft	24.6	54.3	1 coil
136051-000	3/4 in. RAUPEX O <sub>2</sub> Barrier Pipe, 1000 ft coil (304.8 m)	1000 ft	49.2	108.5	1 coil



**1 in. RAUPEX O<sub>2</sub> Barrier Pipe**

Article No.	Description	Package Quantity	Unit Weight kg	Unit Weight lb	Minimum Order
136011-100	1 in. RAUPEX O <sub>2</sub> Barrier Pipe, 100 ft coil (30.5 m)	100 ft	7.9	17.5	1 coil
136011-500	1 in. RAUPEX O <sub>2</sub> Barrier Pipe, 500 ft coil (152.4 m)	500 ft	39.7	87.5	1 coil

**1 1/4 in. RAUPEX O<sub>2</sub> Barrier Pipe**

Article No.	Description	Package Quantity	Unit Weight kg	Unit Weight lb	Minimum Order
136283-100	1 1/4 in. RAUPEX O <sub>2</sub> Barrier Pipe, 100 ft coil (30.5 m)	100 ft	11.4	25.0	1 coil
136283-111	1 1/4 in. RAUPEX O <sub>2</sub> Barrier Pipe, 1,000 ft coil (304.8 m)	1000 ft	114.0	250.0	1 coil

**1 1/2 in. RAUPEX O<sub>2</sub> Barrier Pipe**

Article No.	Description	Package Quantity	Unit Weight kg	Unit Weight lb	Minimum Order
136293-100	1 1/2 in. RAUPEX O <sub>2</sub> Barrier Pipe, 100 ft coil (30.5 m)	100 ft	16.0	35.0	1 coil

**2 in. RAUPEX O<sub>2</sub> Barrier Pipe**

Article No.	Description	Package Quantity	Unit Weight kg	Unit Weight lb	Minimum Order
136303-100	2 in. RAUPEX O <sub>2</sub> Barrier Pipe, 100 ft coil (30.5 m)	100 ft	27.4	60.0	1 coil

**RAUPEX O<sub>2</sub> Barrier Pipe 20 ft Straight Lengths**

Article No.	Description	Package Quantity Bag	Unit Weight kg	Unit Weight lb	Minimum Order
136051-020	3/4 in. RAUPEX O <sub>2</sub> Barrier Pipe, 20 ft (6.1 m)	25 pcs (500 ft)	1.0	2.2	1 bag
136011-020	1 in. RAUPEX O <sub>2</sub> Barrier Pipe, 20 ft (6.1 m)	25 pcs (500 ft)	1.6	3.5	1 bag
136283-020	1 1/4 in. RAUPEX O <sub>2</sub> Barrier Pipe, 20 ft (6.1 m)	5 pcs (100 ft)	2.3	5.0	1 bag
136293-020	1 1/2 in. RAUPEX O <sub>2</sub> Barrier Pipe, 20 ft (6.1 m)	5 pcs (100 ft)	3.2	7.0	1 bag
136303-020	2 in. RAUPEX O <sub>2</sub> Barrier Pipe, 20 ft (6.1 m)	5 pcs (100 ft)	5.5	12.0	1 bag





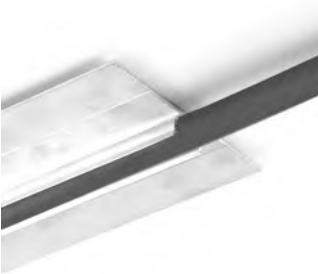
## 2. Radiant heating plate systems

Aluminum heat transfer plates are used in joist space installations to enhance heat transfer and improve efficiency. Radiant heating plate systems outperform talon-up joist space construction installations. Plate systems are suitable for both new construction and retrofit residential applications.



RAUPLATE™ Radiant Heating System							
Article No.	Description	Nominal Length		Package Quantity	Unit Weight		Minimum Order
		m	ft		kg	lb	
298926-001	RAUPLATE Heat Transfer Plate For 1/2 in. RAUPEX	1.2	4	20 pcs/box	0.70	1.50	1 box

RAUPLATE heat transfer plates are designed with two pipe channels 8 in. on-center. RAUPLATE is screwed to the underside of the subfloor in the joist space and RAUPEX pipe snaps into the plates. Plates measure 8.7 x 47 in (22 x 119 cm).



Heat Transfer Plates, Heavy Gauge					
Article No.	Description	Package Quantity	Unit Weight		Minimum Order
			g	lb	
235962*	Heat Transfer Plate, Heavy Gauge for 3/8 in. RAUPEX	20 pcs/carton	495	1.09	1 carton
235972	Heat Transfer Plate, Heavy Gauge for 1/2 in. RAUPEX	20 pcs/carton	509	1.12	1 carton

\*This item is not stocked. Lead time may vary. Minimum order quantities may vary.

Aluminum heat transfer plates are screwed into the joist space and RAUPEX pipe to snap into the plates. Plates measure 3.5 x 48 in (8.9 x 121.9 cm) with pre-drilled 1/8 in. holes.

### 3. Radiant heating panel systems

Radiant heating panel systems are installed directly on top of the subfloor, and for some installations in walls or ceilings behind gypsum board.



**RAUPANEL™ High-performance Radiant Heating System**

Article No.	Description	Package Quantity	Unit Weight kg lb		Minimum Order
235307	RAUPANEL (6 ft lengths)	96 ft / 16 pcs/box	1.73	3.80	1 box
235327-001	RAUPANEL 6 in. Plywood Return Bend (4 returns)	32 ft / 8 pcs/box	1.82	4.00	1 box
235337-001	RAUPANEL 8 in. Plywood Return Bend (3 returns)	32 ft / 8 pcs/box	2.05	4.50	1 box
235377-001	RAUPANEL 2 in. Plywood Furring Strip	136 ft / 34 pcs/box	0.45	1.00	1 box
235387	Deburring Tool	10 pcs/box	0.02	0.05	1

Furring strips are to be used in conjunction with 8 in. return bends to facilitate proper spacing of RAUPANEL and to provide a nailing surface for the floor covering. Reference the table below for product dimensions and square footage. Follow RAUPANEL System Installation Guide (855.625) for instructions on design and use of this product. RAUPANEL is 5/8 in. thick and designed for use with 3/8 in. RAUPEX O<sub>2</sub> barrier pipe.

**Table of Dimensions**

Article No.	Dimensions L x W x H	ft <sup>2</sup> /pc	ft <sup>2</sup> /pkg	m <sup>2</sup> /pc	m <sup>2</sup> /pkg
235307	72 x 6 x 5/8 in.	3.0	48.0	0.279	4.459
235327-001	48 x 8 x 5/8 in.	2.7	21.3	0.251	1.979
235337-001	48 x 9 x 5/8 in.	3.0	24.0	0.279	2.230
235377-001	48 x 1 15/16 x 5/8 in.	0.7	22.7	0.065	2.110



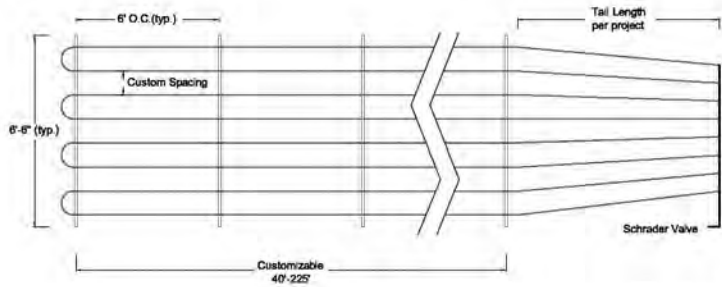
**RAUBOARD™ Radiant Heating System**

Article No.	Description	Package Quantity	Unit Weight kg lb		Minimum Order
298896-001	RAUBOARD Double Groove	6 pcs/bundle	2.3	5.0	1 bundle
298796-001	RAUBOARD Single Groove	6 pcs/bundle	1.1	2.5	1 bundle
298396-001	RAUBOARD Return Groove	6 pcs/bundle	1.1	2.4	1 bundle
136549-001	10.1 mm RAUPEX O <sub>2</sub> Barrier Pipe, 1000 ft coil (304.8 m)	1000 ft	11.8	26.0	1 coil
136549-500	10.1 mm RAUPEX O <sub>2</sub> Barrier Pipe, 500 ft coil (152.4 m)	500 ft	5.9	13.0	1 coil
200526-001	10.1 mm SDR11 Coupling	10 pcs/box	0.02	0.04	1 box
200536-001	10.1 mm SDR11 Sleeve	10 pcs/box	0.01	0.02	1 box
200546-001	10.1 mm RAUPEX x R-20 Brass Manifold Outlet	2 pcs/bag	0.06	0.14	1 bag
228950-002	10.1 mm Polymer Support Bend	100 pcs/box	0.02	0.06	1 box
228396-001	RAUTOOL K10 Tool Kit	1	2.3	5.0	1

RAUBOARD low-profile heat transfer panels are screwed to the subfloor or wall/ceiling joists, then the 10.1 mm RAUPEX pipe snaps into the groove. A small bead of silicone is applied to the groove before installing the pipe. RAUBOARD panels measure 1/2 in. thick with pipe spacing of 6 in (152 mm) on-center.

# 4. Radiant heating mat systems

RAUMAT™ is a pre-assembled roll of RAUPEX O<sub>2</sub> barrier pipe intended for radiant heating and cooling systems to be installed in large, open slab areas. RAUMAT is custom designed and built to project-specific requirements. Contact your local REHAU sales office for availability. RAUMAT is custom-made for each project, therefore article numbers, pricing, options and lead times vary.



## RAUMAT Pre-assembled Radiant Mat System With 3/4 in. RAUPEX Pipe

### Options

Length	Custom lengths 40 to 250 ft
Width	Custom width up to 6.5 ft
Spacing	Custom spacing
Pipe	RAUPEX O <sub>2</sub> barrier 3/4 in.
Circuits	Up to 5 circuits per RAUMAT (equal length)
Tails	Customizable per project requirements
Supports	PEX rails every 6 ft

## RAUMAT Pre-assembled Radiant Mat System With 5/8 in. RAUPEX Pipe

### Options

Length	Custom lengths 40 to 250 ft
Width	Custom width up to 6.5 ft
Spacing	Custom spacing (1 in. OC increments)
Pipe	RAUPEX O <sub>2</sub> barrier 5/8 in.
Circuits	Up to 5 circuits per RAUMAT (equal length)
Tails	Customizable per project requirements
Supports	PEX rails every 6 ft

RAUMAT is custom-made for each project, therefore article numbers, pricing, options and lead times vary. Contact your local REHAU sales office for availability.



### RAUPEX SPEED Hook-and-Loop Radiant System

RAUPEX SPEED hook-and-loop radiant system is used in floors to efficiently and evenly distribute heat/cold from RAUPEX SPEED pipe into the room. The system can be installed in a concrete slab on grade, suspended slab or above suspended wood floor and encased in a thin slab overpour.



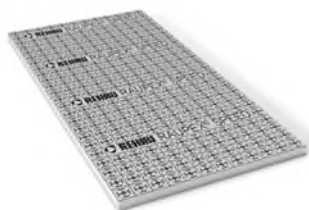
1/2 in. RAUPEX SPEED O <sub>2</sub> Barrier Pipe					
Article No.	Description	Package Quantity	Unit Weight kg	Unit Weight lb	Minimum Order
160950-300	1/2 in. RAUPEX SPEED O <sub>2</sub> Barrier Pipe, 300 ft coil (91.4 m)	300 ft	7.8	17.2	1 coil
160950-001	1/2 in. RAUPEX SPEED O <sub>2</sub> Barrier Pipe, 1,000 ft coil (304.8 m)	1000 ft	26.3	57.9	1 coil

RAUPEX SPEED O<sub>2</sub> barrier pipe includes a hook-and-loop tape for fastening to the RAUPEX SPEED mat or iBoard, without the need for staples, pins or clips.



RAUPEX SPEED Mat					
Article No.	Description	Package Quantity	Unit Weight kg	Unit Weight lb	Minimum Order
316110-100	RAUPEX SPEED Mat R, Roll	161.4 ft <sup>2</sup> (15m <sup>2</sup> )	11.7	25.79	1 roll

The RAUPEX SPEED hook-and-loop mat has an adhesive bottom, allowing it to be installed on different insulation materials and substrates. The loop part of the hook-and-loop system on the top of the mat works with the hook-and-loop tape of the RAUPEX SPEED O<sub>2</sub> barrier pipe for fastening without the need for staples, pins or clips.



RAUPEX SPEED iBoard					
Article No.	Description	Package Quantity	Unit Weight kg	Unit Weight lb	Minimum Order
422069-001	RAUPEX SPEED iBoard R5 (4 ft x 8 ft x 1.25 in)	320 ft <sup>2</sup> (29.73m <sup>2</sup> )	21.55	47.5	*
422071-001	RAUPEX SPEED iBoard R10 (4 ft x 8 ft x 2.38 in.)	160 ft <sup>2</sup> (14.86m <sup>2</sup> )	31.98	70.5	*
427469-001	RAUPEX SPEED iBoard Tape	2 in (W) x 108 ft. (L)	0.28	0.63	1 roll

\*Lead times and minimum order quantity vary per project, contact sales office for details.

The RAUPEX SPEED iBoard combines an R-value insulation board with the hook-and-loop fastening system for radiant overpour applications. The hook-and-loop tape on the RAUPEX SPEED pipe fastens to the loop surface of the iBoard without the need for staples, pins or clips. The imprinted grid pattern on the iBoard enables fast and accurate pipe layout. Tape may be used to join or repair iBoards.



RAUPEX SPEED Door Spreader					
Article No.	Description	Package Quantity	Unit Weight kg	Unit Weight lb	Minimum Order
104027-001	RAUPEX SPEED Door Spreader With Pipe Guide	1	1.10	2.42	1

The RAUPEX SPEED door spreader with pipe guide aids in the installation of the RAUPEX SPEED hook-and-loop radiant systems by guiding the pipe above the mat or iBoard during the installation process.



RAUPEX Horizontal Uncoiler					
Article No.	Description	Package Quantity	Unit Weight kg	Unit Weight lb	Minimum Order
286151-002	RAUPEX Horizontal Uncoiler	1	13	28	1

Uncoiler dispenses RAUPEX pipe horizontally and is capable of holding RAUPEX coils up to 1 in.

## 5. PRO-BALANCE stainless steel manifolds



**PRO-BALANCE 1 in. Stainless Steel Manifold With Gauges**

Article No.	Stations	Manifold Length		Package Quantity	Unit Weight		Minimum Order
		mm	in		kg	lb	
381101-001	1	254	9.98	1	2.4	5.3	1
381102-001	2	310	12.20	1	2.8	6.2	1
381103-001	3	365	14.37	1	3.2	7.1	1
381104-001	4	420	16.54	1	3.6	8.0	1
381105-001	5	475	18.7	1	4.0	8.9	1
381106-001	6	530	20.87	1	4.4	9.8	1
381107-001	7	585	23.03	1	4.9	10.7	1
381108-001	8	640	25.20	1	5.2	11.6	1
381109-001	9	695	27.36	1	5.7	12.5	1
381110-001	10	750	29.53	1	6.0	13.3	1
381111-001	11	805	31.69	1	6.5	14.3	1
381112-001	12	860	33.86	1	6.9	15.1	1

Delivered pre-assembled and ready to install. Use with 10.1 mm and 3/8, 1/2, 5/8 and 3/4 in. RAUPEX pipe. Compatible with REHAU manifold valve actuator (Art. 260166). Order manifold-to-pipe connectors separately (see R-20 compression-style manifold connections below).

Each PRO-BALANCE 1 in. manifold comes complete with the following:

- 1 in. NPT supply and return manifold isolation valves with gaskets and mini thermometers
- Visual flow gauges/isolation valves (0 to 2 GPM) on stainless steel supply header
- Circuit balancing/isolation valves on stainless steel return header
- Air vent drain valves with gaskets
- Mounting brackets
- Vent key and holder
- Installation instructions
- Manifold circuit chart

Notes:

- Manifold lengths above include the isolation ball valve 2.44 in (62 mm) and the air vent/boiler drain valves 2.24 in (57 mm)
- Maximum flow is 2.0 GPM (0.13 l/s) per circuit; and a total manifold flow of no more than 20 GPM (1.26 l/s)
- Depth of manifold is 3.9 in (10.0 cm) with bracket, valve and mini thermometer installed
- Can be joined to other manifold sections using 1 in. BSPP unions (Art. 316258-002)

**RAUPEX Connections for PRO-BALANCE Stainless Steel Manifolds**

Article No.	Description	Package Quantity			Unit Weight		Minimum Order
		Bag	Box	Carton	g	lb	
418315-001	3/8 in. RAUPEX x R-20 Nickel Plated Manifold Outlet	2	40	240	76	0.17	1 bag/2 connectors
418317-001	1/2 in. RAUPEX x R-20 Nickel Plated Manifold Outlet	2	40	240	73	0.16	1 bag/2 connectors
418318-001	5/8 in. RAUPEX x R-20 Nickel Plated Manifold Outlet	2	40	240	73	0.16	1 bag/2 connectors
418319-001	3/4 in. RAUPEX x R-20 Nickel Plated Manifold Outlet	2	24	144	132	0.29	1 bag/2 connectors

For use with 1 in. PRO-BALANCE stainless steel manifold. 3/8, 1/2 and 5/8 in. fittings include insert with O-ring, split brass ring and compression nut. 3/4 in. fitting includes R-20 x 1 in. bushing, 3/4 in. insert with O-ring, split brass ring and compression nut.



**PRO-BALANCE Stainless Steel Manifold Replacement Flow Gauges**

Article No.	Description	Package Quantity	Unit Weight g	Unit Weight lb	Minimum Order
316252-002	PRO-BALANCE 1 in. Flow Gauge Replacement Kit, Nickel Plated	1	85	0.19	1

PRO-BALANCE flow gauge kits can be used to replace flow gauges on the supply side of the PRO-BALANCE stainless steel manifolds and connect directly with a 3/8 in. threaded connection. The replacement flow gauges have an integrated shutoff valve that is manually activated with a common vent key. Install using thread sealant.

**PRO-BALANCE Stainless Steel Manifold Circuit Balancing/Isolation Valves**

Article No.	Description	Package Quantity	Unit Weight g	Unit Weight lb	Minimum Order
316254-002	PRO-BALANCE Circuit Balancing/Isolation Valve, Nickel Plated	1	90	0.19	1

Replacement circuit balancing/isolation valve for the return side of the 1 in. PRO-BALANCE stainless steel manifold. Install using thread sealant.

**PRO-BALANCE Stainless Steel Manifold Circuit Isolation Valves**

Article No.	Description	Package Quantity	Unit Weight kg	Unit Weight lb	Minimum Order
302047-001	PRO-BALANCE Manifold Circuit Isolation Valve, Nickel Plated	10/box	0.12	0.26	1 box

This nickel plated 1/4 turn ball valve attaches to R-20 circuit outlets on the supply side of 1 in. PRO-BALANCE stainless steel manifold to allow for complete shut-off. Standard 1/4 in. vent key (supplied with each manifold) is used to operate the valve. Install flow-stop valves by hand onto R-20 outlets of the manifold. Do not use thread sealant. Thread the valve clockwise until it stops. If necessary, back the valve off to align the valve stem with the front of the manifold. may only be used with 3/8, 1/2 and 5/8 in. R-20 outlets.

**NPT Valve Set With Thermometer Housings for PRO-BALANCE 1 in. Stainless Steel Manifolds**

Article No.	Description	Package Quantity	Unit Weight g	Unit Weight lb	Minimum Order
316250-002	1 in. NPT Valve Set w/ Thermometer Housings, Nickel Plated	Set of 2	420	0.92	1 set

These valves have integrated thermometer housings on each side of the valve bodies. Mini thermometers (Art. 250218) can be set into these housings to give accurate readings of temperatures on both supply and return sides of any PRO-BALANCE 1 in. manifold. Includes gaskets. Mini thermometers are sold separately.





**PRO-BALANCE Stainless Steel Manifold Air Vent/Boiler Drain Combination Set**

Article No.	Description	Package Quantity	Unit Weight		Minimum Order
			g	lb	
316257-002	1 in. BSPP Air Vent/Boiler Drain Combination Set w/ Gaskets, Nickel Plated	1 set of 2	444	0.98	1 set

This set includes air vent/boiler drain combination pieces with union nuts and gaskets. Manual air vent opens with 1/4 in. vent key (supplied with each manifold). Boiler drain ball valve includes male garden hose thread (GHT). Gasketed caps included.



**PRO-BALANCE Stainless Steel Manifold Union Sets**

Article No.	Description	Package Quantity	Unit Weight		Minimum Order
			g	lb	
316258-002	1 in. BSPP Unions w/ Gaskets, Nickel Plated	1 set of 2	300	0.60	1 set

For use with 1 in. PRO-BALANCE stainless steel manifolds to connect two or more manifolds together in series. Includes union nuts and gaskets. May be used to extend an installed manifold.



**PRO-BALANCE Stainless Steel Manifold End Caps**

Article No.	Description	Package Quantity	Unit Weight		Minimum Order
			g	lb	
316248-002	1 in. Manifold End Cap w/ Gasket, Nickel Plated	1	100	0.22	1

Can be used to cap off end of any manifold header while eliminating usual end pieces. Includes gasket.



**PRO-BALANCE Stainless Steel Manifold BSPP 90° Angle Pieces**

Article No.	Description	Package Quantity	Unit Weight g	Unit Weight lb	Minimum Order
316249-002	1 in. BSPP 90° Angle Piece w/ Gasket, Nickel Plated	1	343	0.76	1

For 1 in. PRO-BALANCE stainless steel manifolds. Includes union nut and gasket. Can be used to install manifold isolation valves at a right angle to manifold.



**PRO-BALANCE Blind Plugs**

Article No.	Description	Package Quantity	Unit Weight g	Unit Weight lb	Minimum Order
298186-001	Blind Plug 3/8 in. BSPP, Nickel Plated	1	17	0.04	1

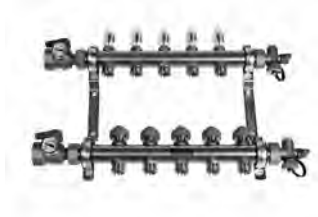
PRO-BALANCE blind plugs are nickel-plated brass plugs with an EPDM O-ring and can be used in place of the PRO-BALANCE flow gauges on the supply side of the PRO-BALANCE stainless steel manifolds. Install using thread sealant.



**PRO-BALANCE Manifold Protective Caps**

Article No.	Description	Package Quantity	Unit Weight g	Unit Weight lb	Minimum Order
321531-100	PRO-BALANCE Protective Cap (White)	1	3.6	0.01	1

## 6. PRO-BALANCE brass manifolds



**PRO-BALANCE 1 in. Brass Manifold With Gauges**

Article No.	Stations	Manifold Length		Package Quantity	Unit Weight		Minimum Order
		mm	in		kg	lb	
240021-100	2	310	12.20	1	2.8	6.2	1
240031-100	3	365	14.37	1	3.2	7.1	1
240041-100	4	420	16.54	1	3.6	8.0	1
240051-100	5	475	18.70	1	4.0	8.9	1
240061-100	6	530	20.87	1	4.4	9.8	1
240071-100	7	585	23.03	1	4.9	10.7	1
240081-100	8	640	25.20	1	5.2	11.6	1
240091-100	9	695	27.36	1	5.7	12.5	1
240101-100	10	750	29.53	1	6.0	13.3	1
240111-100	11	805	31.69	1	6.5	14.3	1
240121-100	12	860	33.86	1	6.9	15.1	1

Delivered pre-assembled and ready to install. Use with 10.1 mm and 3/8, 1/2, 5/8 and 3/4 in. RAUPEX pipe. Compatible with REHAU manifold valve actuator (Art. 20166). Order manifold-to-pipe connectors separately (see R-20 compression-style manifold connections).

Each PRO-BALANCE 1 in. manifold comes complete with the following:

- 1 in. NPT supply and return manifold isolation valves with gaskets and mini thermometers
- Visual flow gauges/isolation valves (0 to 2 GPM) on brass supply header
- Circuit balancing/isolation valves on brass return header
- Mounting brackets
- Air vent drain valves with gaskets
- Vent keys
- Four drywall screws and four sheet metal screws
- Installation instructions
- Manifold circuit chart

Notes:

- Manifold lengths above include the isolation ball valve 2.44 in (62 mm) and the air vent/boiler drain valves 2.24 in (57 mm)
- Maximum flow is 2.0 GPM (0.13 l/s) per circuit; and a total manifold flow of no more than 20 GPM (1.26 l/s)
- Depth of manifold is 3.9 in (10.0 cm) with bracket, valve and mini thermometer installed
- Can be joined to other manifold sections using 1 in. BSPP unions (Art. 260407) or 1 in. BSPF x 1 in. BSPM union tee (Art. 250227-001).



**PRO-BALANCE 1 1/4 in. Brass Manifold With Gauges**

Article No.	Stations	Manifold Length mm	Manifold Length in	Package Quantity	Unit Weight		Minimum Order
					kg	lb	
281841-101	4	398	15.08	1	5.0	11.0	1
281851-101	5	453	17.06	1	5.4	12.0	1
281861-101	6	508	19.02	1	6.0	13.1	1
281871-101	7	563	20.99	1	6.5	14.2	1
281881-101	8	618	22.95	1	6.9	15.3	1
281891-101	9	673	24.92	1	7.5	16.4	1
281801-101	10	728	26.89	1	9.2	20.3	1

Delivered pre-assembled and ready to install. Use with 3/8, 1/2, 5/8 and 3/4 in. RAUPEX pipe. Compatible with Manifold Valve Actuator (Art. 260166). Order manifold-to-pipe connectors separately (see R-20 compression-style manifold connections)

Each manifold comes complete with:

- Installation instructions
- 1 1/4 in. NPT supply and return manifold isolation ball valves with thermometer sockets and flat gaskets
- Two 1 1/4 in. BSPP brass end caps with gaskets
- Visual flow gauges (0 to 4 GPM) on supply side
- Circuit balancing/isolation valves on return side
- Mounting brackets
- Four drywall screws
- Vent key
- Manifold circuit chart

Notes:

- Mini Thermometers (Art. 250218) sold separately
- Manifold lengths above include the isolation ball valve 3.86 in (98 mm)
- Maximum flow is 4.0 GPM (0.25 l/s) per circuit; 40 GPM (2.52 l/s) total
- Depth of manifold is 4.50 in (11.4 cm) with bracket, valve and mini thermometer installed
- Can be joined to other manifold sections using 1 1/4 in. BSPP unions (Art. 281971-001) or 1 1/4 in. BSPP x 1 1/4 in. BSPP x 1 1/4 in. BSPM Union Tee (Art. 250228-001).

**RAUPEX Connections for PRO-BALANCE Brass Manifolds**

Article No.	Description	Package Quantity			Unit Weight		Minimum Order
		Bag	Box	Carton	g	lb	
267507-101	3/8 in. RAUPEX x R-20 Brass Manifold Outlet	2	40	240	76	0.17	1 bag/2 connectors
261007-101	1/2 in. RAUPEX x R-20 Brass Manifold Outlet	2	40	240	73	0.16	1 bag/2 connectors
267557-101	5/8 in. RAUPEX x R-20 Brass Manifold Outlet	2	40	240	73	0.16	1 bag/2 connectors
267007-101	3/4 in. RAUPEX x R-20 Brass Manifold Outlet	2	24	144	132	0.29	1 bag/2 connectors
267007-100	EPDM O-ring for RAUPEX Insert to R-20 Connection	10	500	n/a	0.91	0.002	1 bag/10 rings

For use with 1 and 1 1/4 in. PRO-BALANCE manifolds, 3/8, 1/2 and 5/8 in. fittings include insert with O-ring, split brass ring and compression nut. 3/4 in. fitting includes R-20 x 1 in. bushing, 3/4 in. insert with O-ring, split brass ring and compression nut.



**PRO-BALANCE Brass Manifold Replacement Flow Gauges**

Article No.	Description	Package Quantity	Unit Weight g	Unit Weight lb	Minimum Order
250220-002	PRO-BALANCE 1 in. Flow Gauge Replacement Kit	1	85	0.19	1
281901-101	PRO-BALANCE 1 1/4 in. Flow Gauge Replacement Kit	1	85	0.19	1

PRO-BALANCE flow gauge kits can be used to replace PRO-BALANCE flow gauges on the supply side of the PRO-BALANCE brass manifolds and connect directly with a 3/8 in. threaded connection. The 1 in. gauge has an integrated shutoff valve that is manually activated with a common vent key. Install using thread sealant.

**PRO-BALANCE Brass Manifold Circuit Balancing/Isolation Valves**

Article No.	Description	Package Quantity	Unit Weight g	Unit Weight lb	Minimum Order
250221	PRO-BALANCE Circuit Balancing/Isolation Valve	1	90	0.19	1

Replacement circuit balancing/isolation valve for the return side of the 1 and 1 1/4 in. PRO-BALANCE manifold. Install using thread sealant.

**PRO-BALANCE Brass Manifold Flow-Stop Circuit Valves**

Article No.	Description	Package Quantity	Unit Weight kg	Unit Weight lb	Minimum Order
250224	PRO-BALANCE Flow-stop Circuit Valve	5/box	0.12	0.26	1 box

This brass 1/4 turn ball valve attaches to R-20 circuit outlets on the supply side of 1 and 1 1/4 in. PRO-BALANCE manifolds to allow for complete shut-off. Standard 1/4 in. vent key (supplied with each manifold) is used to operate the valve. Install flow-stop valves by hand onto R-20 outlets of the PRO-BALANCE 1 in. manifold. Do not use thread sealant. Thread the valve clockwise until it stops. If necessary, back the valve off to align the valve stem with the front of the manifold. May only be used with 3/8, 1/2 and 5/8 in. R-20 outlets.

**NPT Valve Set With Thermometer Housings for PRO-BALANCE 1 in. Brass Manifolds**

Article No.	Description	Package Quantity	Unit Weight g	Unit Weight lb	Minimum Order
250216	1 in. NPT Valve Set w/ Thermometer Housings	Set of 2	420	0.92	1 set

These valves have integrated thermometer housings on each side of the valve bodies. Mini Thermometers (Art. 250218) can be set into these housings to give accurate readings of temperatures on both supply and return sides of any PRO-BALANCE 1 in. manifold. Includes gaskets. Mini thermometers are sold separately.

**PRO-BALANCE 1 1/4 in. Brass Manifold NPT Isolation Ball Valve Sets**

Article No.	Description	Package Quantity	Unit Weight kg	Unit Weight lb	Minimum Order
281931-001	1 1/4 in. NPT Isolation Valve Set w/ Gaskets	1 set of 2	2.1	4.63	1 set

These valves have integrated thermometer housings on each side of the valve bodies. Mini thermometers (Art. 250218) can be set into these housings to give accurate readings of temperatures on both supply and return sides of any PRO-BALANCE 1 1/4 in. manifold. Includes gaskets. Mini thermometers are sold separately.

**PRO-BALANCE Brass Manifold Air Vent/Boiler Drain Combination Sets**

Article No.	Description	Package Quantity	Unit Weight g	Unit Weight lb	Minimum Order
250226	1 in. BSPP Air Vent/Boiler Drain Combination Set w/ Gaskets	1 set of 2	444	0.98	1 set

This set includes air vent/boiler drain combination pieces with union nuts and gaskets. Manual air vent opens with 1/4 in. vent key (supplied with each manifold). Boiler drain ball valve includes male garden hose thread (GHT) for convenient connections. Gasketed caps included.

**PRO-BALANCE Brass Manifold Automatic Air Vents**

Article No.	Description	Package Quantity	Unit Weight g	Unit Weight lb	Minimum Order
250212	Automatic Air Vent 3/8 in. BSPP	1	142	0.31	1

For 1 and 1 1/4 in. PRO-BALANCE manifolds. Can be used to replace manual air vent on air vent/boiler drain pieces (Art. 250226) to allow automatic elimination of entrained air in a hydronic system.

**PRO-BALANCE Brass Manifold Union Sets**

Article No.	Description	Package Quantity	Unit Weight g	Unit Weight lb	Minimum Order
260407	1 in. BSPP Unions w/ Gaskets	1 set of 2	300	0.60	1 set
281971-001	1 1/4 in. BSPP Unions w/ Gaskets	1 set of 2	220	0.49	1 set

For use with 1 and 1 1/4 in. PRO-BALANCE manifolds to connect two or more manifolds together in series. Includes union nuts and gaskets. May be used to extend an installed manifold.

**PRO-BALANCE 1 1/4 in. Brass Manifold Adapter Fittings**

Article No.	Description	Package Quantity	Unit Weight g	Unit Weight lb	Minimum Order
298986-001	1 1/4 in. BSPF x 1 in. BSPM Adapter	1 set of 2	129	0.28	1 set

For use with PRO-BALANCE 1 1/4 in. brass manifolds to transition 1 1/4 in. BSPF x 1 in. BSPM in order to use air vent/boiler drain combination set (Art. 250226).

**PRO-BALANCE Brass Manifold End Caps**

Article No.	Description	Package Quantity	Unit Weight g	Unit Weight lb	Minimum Order
250213	1 in. Manifold End Cap w/ Gasket	1	100	0.22	1
281951-001	1 1/4 in. Manifold End Cap w/ Gasket	1	100	0.22	1

Can be used to cap off end of any manifold header while eliminating usual end pieces. Includes gasket.



**PRO-BALANCE Brass Manifold BSPP 90° Angle Pieces**

Article No.	Description	Package Quantity	Unit Weight g	Unit Weight lb	Minimum Order
250214	1 in. BSPP 90° Angle Piece w/ Gasket	1	343	0.76	1
281981-001	1 1/4 in. BSPP 90° Angle Piece w/ Gasket	1	418	0.92	1

For 1 and 1 1/4 in. PRO-BALANCE manifolds. Includes union nut and gasket. Can be used to install manifold isolation valves at a right angle to manifold.

**PRO-BALANCE Blind Plugs**

Article No.	Description	Package Quantity	Unit Weight g	Unit Weight lb	Minimum Order
298186-001	Blind Plug 3/8 in. BSPP, Nickel Plated	1	17	0.04	1

PRO-BALANCE blind plugs are nickel-plated brass plugs with an EPDM O-ring and can be used in place of the PRO-BALANCE 1 and 1 1/4 in. flow gauges on the supply side of the PRO-BALANCE brass manifolds. Install using thread sealant.

**PRO-BALANCE Manifold Protective Caps**

Article No.	Description	Package Quantity	Unit Weight g	Unit Weight lb	Minimum Order
298996-100	PRO-BALANCE Protective Cap (Blue)	1	3.6	0.01	1

## 7. PRO-BALANCE manifold accessories



### PRO-BALANCE Manifold Extension Kits

Article No.	Description	Package Quantity	Unit Weight kg	Unit Weight lb	Minimum Order
250225-100	Extension Kit for PRO-BALANCE Manifolds	1	1.0	2.2	1

Used to add a circuit to an existing PRO-BALANCE 1 in. manifold. The extension kit includes a supply section with a visual flow gauge, a return section with a circuit balancing/isolation valve and two gaskets.



### PRO-BALANCE Pressure Differential Bypass Modules

Article No.	Description	Package Quantity	Unit Weight kg	Unit Weight lb	Minimum Order
281541-001	PRO-BALANCE Pressure Differential Bypass Module	1	1.3	2.8	1

This modular accessory connects directly to PRO-BALANCE manifold. Normally, a constant speed circulator is sized assuming that all circuits in a zone valve system may be open. The pressure differential bypass module provides a means to control the excess flow (velocity) that would otherwise occur when actuators close. Installation of this module onto the 1 in. PRO-BALANCE manifolds creates an automatically regulated flow path such that operating zone circuits do not see unnecessarily high flow.



### PRO-BALANCE Manifold Flow Setter Valves

Article No.	Description	Package Quantity	Unit Weight g	Unit Weight lb	Minimum Order
244807-001	1/2 to 4 GPM PRO-BALANCE Flow Setter Valve	1	760	1.67	1

PRO-BALANCE flow setter valves are used to set flow to PRO-BALANCE 1 in. manifolds and can be installed in-line into any pipe feeding a manifold. This is ideal when multiple manifolds are fed from a single circulator and flow needs to be set correctly to each. PRO-BALANCE flow setter valves are also used in variable speed injection pump mixing systems to set the flow through the injection loop.

PRO-BALANCE flow setter valves are supplied with two gaskets and adapters converting to 1 in. MPT.



### PRO-BALANCE Mixing Modules

Article No.	Description	Package Quantity	Unit Weight kg	Unit Weight lb	Minimum Order
281501-001	PRO-BALANCE Mixing Module	1	4.10	9	1

Intended for small radiant heating applications using a fixed "set point" temperature supply. Designed to fit directly to the left or right of the PRO-BALANCE manifold. The supply temperature to the manifold may be adjusted between 68 and 158°F (20 and 70°C), by means of temperature controlled injection valve. The injection valve has features that can limit the manual adjustment of the valve to prevent tampering and/or over-heating. The module pump would be typically energized by a room thermostat via a relay. The relay could be energized by a thermostat or via the end of the actuator of one of the REHAU electronic boxes.

Specifications:

- Max. acceptable working temperature/pressure:
- Pump:

176°F (80°C) / 87 psi (6 bar)

Grundfos UP 15-58-130 mm 1 in. BSPM connections; 3-speed cast iron "SUPERBRUTE"; Integral check valve; 115 VAC, 2 pole, single phase; Flow range: 0 to 17.5 US GPM; Head range: 0 to 19 ft

**PRO-BALANCE Manifold Circuit Outlet Caps**

Article No.	Description	Package Quantity	Unit Weight g	Unit Weight lb	Minimum Order
250209-C	R-20 Circuit Outlet Cap w/ Gasket	1	28	0.07	1

Circuit outlet cap is used to cap off unused outlets on any 1 and 1 1/4 in, PRO-BALANCE manifold. Includes gasket.

**PRO-BALANCE Manifold Union Tee Sets**

Article No.	Description	Package Quantity	Unit Weight kg	Unit Weight lb	Minimum Order
250227-001	1 in. BSPP Manifold Union Tee Set w/ Gaskets	1 set of 2	0.60	1.32	1 set
250228-001	1 1/4 in. BSPP Manifold Union Tee Set w/ Gaskets	1 set of 2	1.50	3.30	1 set

Male thread connections for Manifold Union Tee Sets are 1 1/4 in. BSPM. Sets are supplied with gaskets.

**PRO-BALANCE Manifold Mini Thermometers**

Article No.	Description	Package Quantity	Unit Weight g	Unit Weight lb	Minimum Order
250218	Mini Thermometer	1	24	0.05	1

Mini thermometers can be set into the housings on 1 1/4 or 1 in, NPT valves with thermometer housings to give accurate readings of temperatures on both supply and return sides of any PRO-BALANCE manifold (for use only with these valves). Thermometers read from 40 to 200°F and 0 to 100°C. Valves sold separately.

**PRO-BALANCE Manifold Gaskets**

Article No.	Description	Package Quantity	Unit Weight g	Unit Weight lb	Minimum Order
250203-G	Fiber Gasket for 1 in. Manifold Valve	1	0.91	0.002	1
281811-001	Fiber Gasket for 1 1/4 in. Manifold Valve	1	1.36	0.003	1
327714-001	Rubber Gasket for 1 in. Manifold Valve	1	1.36	0.003	1
327715-001	Rubber Gasket for 1 1/4 in. Manifold Valve	1	2.27	0.005	1

**PRO-BALANCE Manifold Brackets**

Article No.	Description	Package Quantity	Unit Weight kg	Unit Weight lb	Minimum Order
261386	1 1/4 in. Steel Manifold Brackets	Set of 2	0.45	1.0	1 set
261396	1 1/2 in. Steel Manifold Brackets	Set of 2	0.50	1.1	1 set

Steel manifold brackets are for use with PRO-BALANCE 1 in. and 1 1/4 in. manifolds

**PRO-BALANCE White Surface Mount Manifold Cabinets**

Article No.	Description	Typical Station Configuration	Package Quantity	Unit Weight		Minimum Order
				kg	lb	
347400-512	White Surface Mount Manifold Cabinet 16W	Up to 3	1	12.5	27.6	1
347410-512	White Surface Mount Manifold Cabinet 20W	Up To 5	1	16.1	35.5	1
347420-512	White Surface Mount Manifold Cabinet 28W	Up to 8	1	19.1	42.1	1
347430-512	White Surface Mount Manifold Cabinet 36W	Up to 11	1	22.7	50.0	1
347440-512	White Surface Mount Manifold Cabinet 44W	Up to 12	1	23.9	52.7	1
347450-512	White Surface Mount Manifold Cabinet 50W	Up to 12	1	26.8	59.1	1

PRO-BALANCE manifold cabinets for surface installations. Cabinets are made from galvanized steel with basic white powder coat finish (RAL 9016 / Pantone 705). Internal brackets allow for mounting of PRO-BALANCE 1 and 1/4 in. manifolds. Removable coverplate below door extends cabinet opening to floor (27 in / 69 cm). Steel door includes cam latch. Keyed locks can be added separately, see (Art. 217688-001)

**PRO-BALANCE Stainless Steel Surface Mount Manifold Cabinets**

Article No.	Description	Typical Station Configuration	Package Quantity	Unit Weight		Minimum Order
				kg	lb	
316853-512*	Stainless Surface Mount Manifold Cabinet 16W	Up to 3	1	12.5	27.6	1
316854-512*	Stainless Surface Mount Manifold Cabinet 20W	Up To 5	1	16.1	35.5	1
316855-512*	Stainless Surface Mount Manifold Cabinet 28W	Up to 8	1	19.1	42.1	1
316856-512*	Stainless Surface Mount Manifold Cabinet 36W	Up to 11	1	22.7	50.0	1
316857-512*	Stainless Surface Mount Manifold Cabinet 44W	Up to 12	1	23.9	52.7	1
316858-512*	Stainless Surface Mount Manifold Cabinet 50W	Up to 12	1	26.8	59.1	1

\* This item is not stocked. Lead times may vary.

PRO-BALANCE manifold cabinets for surface installations. Cabinets are made from 304 stainless. Internal brackets allow for mounting of PRO-BALANCE 1 and 1/4 in. manifolds. Removable coverplate below door extends cabinet opening to floor (27 in / 69 cm). Steel door includes cam latch. Keyed locks can be added separately, see (Art. 217688-001)

**PRO-BALANCE White Flush Mount Manifold Cabinets**

Article No.	Description	Typical Station Configuration	Package Quantity	Unit Weight		Minimum Order
				kg	lb	
345400-512	White Flush Mount Manifold Cabinet 16W	Up to 3	1	13.7	30.2	1
345410-512	White Flush Mount Manifold Cabinet 20W	Up to 5	1	17.4	38.4	1
345420-512	White Flush Mount Manifold Cabinet 28W	Up to 8	1	20.3	44.8	1
345430-512	White Flush Mount Manifold Cabinet 36W	Up to 11	1	23.2	51.1	1
345440-512	White Flush Mount Manifold Cabinet 44W	Up to 12	1	26.6	58.6	1
345450-512	White Flush Mount Manifold Cabinet 50W	Up to 12	1	30.1	66.4	1

PRO-BALANCE manifold cabinets for flush installation. The cabinets are made from galvanized steel and the frame/door assembly is basic white powder coat finish (RAL 9016 / Pantone 705). Internal brackets allow for mounting of PRO-BALANCE manifolds. Pipe knockouts on both sides allow for pipe connections to the manifold. Cabinet has adjustable legs (0 - 5.7 in / 0 - 15 cm) and screed coverplate (sold separately) to stand the cabinet on the floor with an existing opening. Legs may be removed and the enclosure can be mounted in the wall cavity. The frame/door assembly is adjustable to account for the thickness of the gypsum or other wall coverings (0 - 1.5 in / 0 - 4 cm). Steel door includes cam latch. Keyed locks can be added separately, see (Art. 217688-001)

**PRO-BALANCE White Flush Mount Manifold Cabinet Screed Plates**

Article No.	Description	Package Quantity	Unit Weight		Minimum Order
			kg	lb	
217637-001	Screed Coverplate for White Flush Cabinet 16W	1	0.7	1.5	1
217642-001	Screed Coverplate for White Flush Cabinet 20W	1	0.8	1.8	1
217647-001	Screed Coverplate for White Flush Cabinet 28W	1	1.1	2.4	1
217652-001	Screed Coverplate for White Flush Cabinet 36W	1	1.4	3.0	1
217657-001	Screed Coverplate for White Flush Cabinet 44W	1	1.6	3.6	1
217662-001	Screed Coverplate for White Flush Cabinet 50W	1	1.8	4.1	1

Manifold cabinet screed coverplate used to finish opening for flush mounted cabinets when installed standing on the floor.

**PRO-BALANCE Manifold Cabinet Locks**

Article No.	Description	Mounting Hole	Unit Weight		Minimum Order
			g	lb	
217688-001	Keyed Lock for 3XXXXX Manifold Cabinets	19 mm square	41	0.09	1 set
298606-001	Keyed Lock for 2XXXXX Manifold Cabinets	15 x 18 mm double-D	41	0.09	1 set

Manifold cabinet lock with two keys can be used to replace the pre-installed clip-locks on all manifold cabinets.



## 8. Zone controls and thermostats



**Manifold Actuator Controls— Wiring Junction Box with Transformers**

Article No.	Description	Package Quantity	Unit Weight		Minimum Order
			kg	lb	
298276-001	4 Manifold Actuator Control	1	2.45	5.45	1
298286-001	6 Manifold Actuator Control	1	2.68	5.87	1

The REHAU manifold actuator controls are designed to simplify the wiring process. Easy to follow PC board and secure screw terminal layout eliminates problems caused by incorrect wiring. External indicator lights confirm operation sequence and diagnostic feedback. The unit includes two built-in 40 VA transformers. Extra fuses provided.



**Zone Pump Relay Controls— Wiring Junction Box with Transformer and Priority**

Article No.	Description	Package Quantity	Unit Weight		Minimum Order
			kg	lb	
298726-001	3 Zone Pump Relay Control	1	1.49	3.28	1
298756-001	4 Zone Pump Relay Control	1	1.52	3.35	1
298766-001	6 Zone Pump Relay Control	1	1.64	3.62	1

The REHAU zone pump relay controls are designed to simplify the wiring process. Easy to follow PC board and secure screw terminal layout eliminates problems caused by incorrect wiring. External indicator lights confirm operation sequence and diagnostic feedback. Each unit includes a 15 VA transformer ready to power thermostats. Relays are individually fuse protected. Two spare fuses built-in.



**Zone Control Modules**

Article No.	Description	Package Quantity	Unit Weight		Minimum Order
			kg	lb	
243047-001	Zone Control, 4 Zone Module	1	0.45	1.0	1
243077-001 <sup>+</sup>	Zone Control, 6 Zone Module	1	0.56	1.2	1

<sup>+</sup> This item is not stocked. Lead times may vary.

The zone control module provides a convenient low-voltage wiring panel for thermostats and manifold valve actuators. The zone control module is for use with REHAU thermostats (Art. 236477-001, 236487-001, 398022-001 and 398023-001) and manifold valve actuators (Art. 260166, 260167).

The zone control module may control up to four zones (thermostats), with up to eight actuators (maximum two per zone). Each zone has a terminal for end-switch wires, provided on REHAU manifold valve actuators, to operate circulator pumps, boiler, etc. (through a separate low-voltage relay). For more than four zones (thermostats), additional modules can be connected using standard wire.

**Dual Sensing Dial Thermostats**

Article No.	Description	Package Quantity	Unit Weight g	Unit Weight lb	Minimum Order
236477-001	Dual Sensing Dial Thermostat	1	84	0.185	1

The display on this 3-wire thermostat is a simple easy-to-use dial with a red LED that is lit when there is a call for heat. With the optional floor sensor, this thermostat can regulate either the floor or the room temperature or both, in which case the floor sensor is used as a temperature limiter, either high or low limit. This thermostat also comes with both °F and °C dials.

This thermostat has a 4x DIP switch which allows for limited programming and system configuration. This includes setting high and low floor temperature limits and allowing the thermostat to operate as a simple on/off switch or with PWM anticipation logic.

This thermostat can directly control up to four manifold valve actuators (Art. 260166), either independently or when used with REHAU electronic controls. The thermostat may also be used to control relays and other low voltage controls. This thermostat uses silent operation electronic triac output. 18 AWG or similar wire is recommended for all 24 VAC wiring.

**Notes:**

- Floor/slab sensor requires two additional wires—from slab sensor to thermostat
- Daily programming is not offered on this thermostat
- Requires 24 VAC power source
- For optional floor sensor use Art. 236497-001

**Dual Sensing Digital Thermostats**

Article No.	Description	Package Quantity	Unit Weight g	Unit Weight lb	Minimum Order
236487-002	Dual Sensing Digital Thermostat	1	96	0.21	1

This 3-wire thermostat offers system set-up capabilities with simple, easy-to-use menus. There is a reduced operating mode which may be used for nighttime and vacation periods. With the optional floor sensor this thermostat can regulate either the floor or the room temperature or both. In that case the floor sensor is used as a temperature limiter, either high or low limit. Additional features include pump exercise, °F or °C capabilities and air/floor priority.

This thermostat can directly control up to four manifold valve actuators (Art. 260166), either independently or when used with REHAU electronic controls. Thermostat may also be used to control relays and other low voltage controls. This thermostat uses silent operation electronic triac output. 18 AWG or similar wire is recommended for all 24 VAC wiring.

**Notes:**

- Floor/slab sensor requires two additional wires—from slab sensor to thermostat
- Requires 24 VAC power source
- For optional floor sensor use Art. 236497-001

**10K Floor Sensors**

Article No.	Description	Package Quantity	Unit Weight g	Unit Weight lb	Minimum Order
236497-001	10K Floor Sensor (9.8 ft / 3 m)	1	62	0.14	1

Optional floor sensor for dual sensing thermostats. To be used only with Dual Sensing Dial Thermostat (Art. 236477-001) or Dual Sensing Digital Thermostat (Art. 236487-001).





#### Single-Stage Non-programmable Radiant Heating Thermostats With Floor Sensor

Article No.	Description	Package Quantity	Unit Weight kg	Unit Weight lb	Minimum Order
398022-001 <sup>+</sup>	Single-stage Non-programmable RFH Thermostat (519)	1	0.27	0.60	1

<sup>+</sup> This item is not stocked. Lead times may vary.

Single-stage non-programmable radiant heating thermostat with floor sensor is designed specifically to control hydronic radiant heating zones using pulse width modulation (PWM) technology. Simple up and down buttons and a display with large type make this thermostat easy to read and use. Included slab sensor measures radiant floor temperature to protect the floor from overheating and to enhance comfort.

The thermostat requires 24 VAC power supply and can be used to directly control up to seven REHAU manifold actuators (Art. 260166, 260167). This thermostat can also be used with REHAU zone controls. 4-conductor 18 AWG or similar wire is recommended for all 24 VAC wiring.



#### Two-stage Programmable Radiant Heating Thermostats with Floor Sensor

Article No.	Description	Package Quantity	Unit Weight kg	Unit Weight lb	Minimum Order
398023-001	Two-stage Programmable RFH Thermostat (521)	1	0.27	0.60	1

Two-stage programmable radiant heating thermostat offers three modes of operation: one stage of heating, one stage of heating and one stage of cooling with fan, or two stages of heating with fan. Included slab sensor measures radiant floor temperature to protect the floor from overheating and to enhance comfort. The programmable schedule supports either a 7-day or 24-hour schedule with 2 or 4 events per day. A permanent temperature hold button overrides the programmable schedule.

The thermostat requires 24 VAC power supply and can be used to directly control up to seven REHAU manifold actuators (Art. 260166, 260167). This thermostat can also be used with REHAU zone controls. 4-conductor 18 AWG or similar wire is recommended for all 24 VAC wiring.



#### Accessories for Digital Thermostats

Article No.	Description	Package Quantity	Unit Weight g	Unit Weight lb	Minimum Order
236397	Floor Sensor for Digital Thermostat	1	26	0.06	1
315837-001 <sup>+</sup>	Adapter Plate for Thermostats (519)(521)	1	50	0.10	1

<sup>+</sup> This item is not stocked. Lead times may vary.

The floor sensor (Art. 236397) can be used for floor warming applications and/or to help limit (maximum and/or minimum) floor temperatures. Sensor is completely encased in a protective jacket and can be encased in concrete (it is recommended to slide sensor through a short protective conduit where the wires enter/exit the concrete or gypsum cement). Sensor comes with 10 ft (3 m) of 2-conductor wire.

The Adaptor Plate (Art. 315837-001) covers the paint ring left behind when replacing other thermostats, so that no patching or painting the wall is required. The plate also allows the thermostat to be installed onto a single-gang electrical box and includes screws for mounting the adaptor plate and the device that attaches to it. This adaptor is compatible with thermostats Art. 398022-001 and Art. 398023-001.



#### Flush Mount Indoor Sensors

Article No.	Description	Package Quantity	Unit Weight g	Unit Weight lb	Minimum Order
315838-001 <sup>+</sup>	Flush Mount Indoor Sensor	1	50	0.1	1

<sup>+</sup> This item is not stocked. Lead times may vary.

The flush mount indoor sensor mounts flush or nearly flush to the wall. Sensor material is corrosion resistant, allowing drywall installers to mud over the sensor, or the sensor can be painted to match the existing wall color. The sensor can only be connected to thermostats Art. 398022-001 or Art. 398023-001 for remote temperature sensing.



#### 4-wire Manifold Valve Actuator for PRO-BALANCE Manifolds

Article No.	Description	Package Quantity	Unit Weight g	Unit Weight lb	Minimum Order
260166	4-wire Manifold Valve Actuator	1	131	0.29	1

The 4-wire manifold valve actuator is used to open and close circuit valves on the 1 and 1 1/4 in. PRO-BALANCE manifolds. Use REHAU thermostats to control actuators directly, or connect through REHAU electronic controls.

Features and specifications:

- Gray position indicator provides visual verification of the actuator's position. When the actuator is off and closed, the gray indicator is flush with the top of the actuator. When the actuator is on and open, the gray indicator will rise out of the top of the actuator and be visible from the side.
- Red pull-out tab is provided to allow easy installation onto the manifold. After installation, remove red tab.
- A dry-contact end switch is built into the actuator. This end switch can be used to operate 24 VAC (2 amps max.) relays for pumps and other devices and can be wired so that pumps turn on only when actuator is fully open.
- If required, connect the green end switch wires to a suitable 24 VAC-powered relay to activate a device to be operated by the actuator's end switch or connect these wires directly into an appropriate zone control module.
- 24 VAC "thermal motor" heating element melts a wax cartridge, allowing the actuator to open when there is a call for heat (power on). When the power is off, the wax cools and closes the valve (normally closed). Operation takes 3-4 minutes.
- 4 wires: blue/brown – apply 24 VAC power; green (2) – end switch. Length – 40 in (100 cm).
- Ambient operating temperature range of 32 to 140°F (0 to 60°C).
- Low power draw: approximately 2 VA in operation. Maximum 4.5 VA when first powered. Ensure transformer has sufficient power (VA) to operate all actuators.



#### RA Two-way Zone Valves

Article No.	Description	Cv	Package Quantity	Unit Weight kg	Unit Weight lb	Minimum Order
260027	3/4 in. FPT x 3/4 in. MPT RA Valve	2.7	1	0.44	0.97	1
260037	1 in. FPT x 1 in. MPT RA Valve	2.8	1	0.67	1.48	1

Build your own balancing manifold with these attachments for copper manifolds. Can be combined with the manifold valve actuator for RA valve (Art. 260167) for electric thermostat control (not the standard manifold valve actuator Art. 260166). 3/4 and 1 in. RA valve connections are as noted.



#### Manifold Valve Actuator for RA Valves

Article No.	Description	Package Quantity	Unit Weight kg	Unit Weight lb	Minimum Order
260167	Manifold Valve Actuator for RA Valve	1	0.14	0.30	1

The 4-wire manifold valve actuator is a special version for use with RA valves. This includes balancing valves for 3/4 and 1 in. (Art. 260027 and 260037).

## 9. EVERLOC+ compression-sleeve system

EVERLOC+ compression-sleeve fittings and sleeves are designed specifically for use with REHAU PEXa pipe. Installation is performed with EVERLOC+ compression-sleeve tools. Follow all published REHAU Technical Guidelines. EVERLOC+ polymer fittings are produced from a polyphenylsulfone (PPSU) material. EVERLOC+ LF brass fittings are produced from ECO Brass® (UNS C69300 or CW724R). EVERLOC+ compression sleeves are produced using a specially formulated PEXa material and are designed specifically for use with EVERLOC+ fittings. All EVERLOC+ fittings and sleeves comply with the lead-free requirements of the U.S. Safe Drinking Water Act. Order PEXa compression sleeves separately from fittings. EVERLOC+ polymer fittings and sleeves are manufactured by REHAU in a plant using a quality management system that is certified to ISO 9001.



EVERLOC+ PEXa Compression Sleeves						
Article No.	Description	Package Quantity		Unit Weight		Minimum Order
		Bag	Box	g	lb	
104815-001	3/8 in. EVERLOC+ PEXa Sleeve	50	600	2.72	0.006	1 bag
104816-001	1/2 in. EVERLOC+ PEXa Sleeve	100	400	3.17	0.007	1 box
104817-001	5/8 in. EVERLOC+ PEXa Sleeve	50	250	5.44	0.012	1 bag
104818-001	3/4 in. EVERLOC+ PEXa Sleeve	50	150	8.62	0.019	1 box
104819-001	1 in. EVERLOC+ PEXa Sleeve	20	80	15.88	0.035	1 box
104820-001	1 1/4 in. EVERLOC+ PEXa Sleeve	10	50	20.41	0.045	1 box
104821-001	1 1/2 in. EVERLOC+ PEXa Sleeve	10	30	24.95	0.055	1 box
104822-001	2 in. EVERLOC+ PEXa Sleeve	5	15	29.48	0.065	1 box



EVERLOC+ Straight Couplings						
Article No.	Description	Package Quantity		Unit Weight		Minimum Order
		Bag	Box	g	lb	
317138-001	3/8 x 3/8 in. EVERLOC+ LF Brass Coupling	-	100	19.50	0.04	1 box
104824-001	1/2 x 1/2 in. EVERLOC+ Polymer Coupling	10	100	4.08	0.01	1 bag
317142-001	5/8 x 5/8 in. EVERLOC+ LF Brass Coupling	-	40	48.53	0.11	1 box
104825-001	3/4 x 3/4 in. EVERLOC+ Polymer Coupling	10	50	12.25	0.03	1 bag
104826-001	1 x 1 in. EVERLOC+ Polymer Coupling	10	50	22.23	0.05	1 bag
104827-001	1 1/4 x 1 1/4 in. EVERLOC+ Polymer Coupling	1	10	40.37	0.09	1 bag
104828-001	1 1/2 x 1 1/2 in. EVERLOC+ Polymer Coupling	1	10	71.21	0.16	1 bag
104829-001	2 x 2 in. EVERLOC+ Polymer Coupling	1	10	125.19	0.28	1 bag



EVERLOC+ Reducer Couplings						
Article No.	Description	Package Quantity		Unit Weight		Minimum Order
		Bag	Box	g	lb	
104830-001	3/4 x 1/2 in. EVERLOC+ Polymer Coupling	10	100	8.62	0.02	1 bag
426294-001	3/4 x 5/8 in. EVERLOC+ LF Brass Coupling	-	20	68.0	0.15	1 box
426297-001	1 x 1/2 in. EVERLOC+ LF Brass Coupling	-	10	90.7	0.20	1 box
104831-001	1 x 3/4 in. EVERLOC+ Polymer Coupling	10	50	17.69	0.04	1 bag
425026-001	1 1/4 x 3/4 in. EVERLOC+ LF Brass Coupling	-	10	151.36	0.33	1 box
104832-001	1 1/4 x 1 in. EVERLOC+ Polymer Coupling	1	10	32.66	0.07	1 bag
425028-001	1 1/2 x 3/4 in. EVERLOC+ LF Brass Coupling	-	6	225.84	0.50	1 box
104833-001	1 1/2 x 1 in. EVERLOC+ Polymer Coupling	1	10	49.90	0.11	1 bag
422233-001	1 1/2 x 1 1/4 in. EVERLOC+ LF Brass Coupling	-	6	304.36	0.67	1 box
425029-001	2 x 1/2 in. EVERLOC+ LF Brass Coupling	-	2	363.01	0.80	1 box
425031-001	2 x 3/4 in. EVERLOC+ LF Brass Coupling	-	2	374.63	0.83	1 box
317139-001	2 x 1 in. EVERLOC+ LF Brass Coupling	-	2	395.59	0.87	1 box
317140-001	2 x 1 1/4 in. EVERLOC+ LF Brass Coupling	-	2	424.66	0.94	1 box
317141-001	2 x 1 1/2 in. EVERLOC+ LF Brass Coupling	-	2	480.07	1.00	1 box

**EVERLOC+ Straight Tees (A x B x C)**

Article No.	Description	Package Bag	Quantity Box	Unit Weight g	Unit Weight lb	Minimum Order
104835-001	1/2 x 1/2 x 1/2 in. EVERLOC+ Polymer Tee	10	50	8.62	0.02	1 bag
104836-001	3/4 x 3/4 x 3/4 in. EVERLOC+ Polymer Tee	10	50	23.59	0.05	1 bag
104837-001	1 x 1 x 1 in. EVERLOC+ Polymer Tee	1	10	42.64	0.09	1 bag
104838-001	1 1/4 x 1 1/4 x 1 1/4 in. EVERLOC+ Polymer Tee	1	10	78.47	0.17	1 bag
104839-001	1 1/2 x 1 1/2 x 1 1/2 in. EVERLOC+ Polymer Tee	1	5	136.53	0.30	1 bag
104840-001	2 x 2 x 2 in. EVERLOC+ Polymer Tee	1	5	245.85	0.54	1 bag

**EVERLOC+ Run Reducing Tees (A x B x C)**

Article No.	Description	Package Bag	Quantity Box	Unit Weight g	Unit Weight lb	Minimum Order
104841-001	3/4 x 1/2 x 3/4 in. EVERLOC+ Polymer Tee	10	50	19.50	0.04	1 bag
104842-001	1 x 3/4 x 1 in. EVERLOC+ Polymer Tee	5	25	37.65	0.08	1 bag
317143-001	1 1/4 x 1 x 1 1/4 in. EVERLOC+ LF Brass Tee	-	2	328.85	0.73	1 box
317144-001	1 1/2 x 1 x 1 1/2 in. EVERLOC+ LF Brass Tee	-	2	517.09	1.14	1 box
317145-001	1 1/2 x 1 1/4 x 1 1/2 in. EVERLOC+ LF Brass Tee	-	2	553.38	1.22	1 box
317146-001	2 x 1 1/4 x 2 in. EVERLOC+ LF Brass Tee	-	1	830.07	1.83	1 box
317147-001	2 x 1 1/2 x 2 in. EVERLOC+ LF Brass Tee	-	1	898.11	1.98	1 box

**EVERLOC+ Branch Reducing Tees (A x B x C)**

Article No.	Description	Package Bag	Quantity Box	Unit Weight g	Unit Weight lb	Minimum Order
104844-001	3/4 x 3/4 x 1/2 in. EVERLOC+ Polymer Tee	10	50	18.14	0.04	1 bag
104846-001	1 x 1 x 1/2 in. EVERLOC+ Polymer Tee	5	25	29.48	0.07	1 bag
104845-001	1 x 1 x 3/4 in. EVERLOC+ Polymer Tee	5	25	35.83	0.08	1 bag
424991-001	1 1/4 x 1 1/4 x 1/2 in. EVERLOC+ LF Brass Tee	-	2	257.30	0.57	1 box
322832-001	1 1/4 x 1 1/4 x 3/4 in. EVERLOC+ LF Brass Tee	-	2	283.60	0.63	1 box
104847-001	1 1/4 x 1 1/4 x 1 in. EVERLOC+ Polymer Tee	1	10	65.77	0.15	1 bag
425024-001	1 1/2 x 1 1/2 x 1/2 in. EVERLOC+ LF Brass Tee	-	2	394.15	0.87	1 box
322833-001	1 1/2 x 1 1/2 x 3/4 in. EVERLOC LF Brass Tee	-	2	424.33	0.94	1 box
104848-001	1 1/2 x 1 1/2 x 1 in. EVERLOC+ Polymer Tee	1	5	102.51	0.23	1 bag
317149-001	1 1/2 x 1 1/2 x 1 1/4 in. EVERLOC+ LF Brass Tee	-	2	535.24	1.18	1 box
424995-001	2 x 2 x 1/2 in. EVERLOC+ LF Brass Tee	-	1	662.03	1.46	1 box
322834-001	2 x 2 x 3/4 in. EVERLOC+ LF Brass Tee	-	2	696.39	1.54	1 box
104849-001	2 x 2 x 1 in. EVERLOC+ Polymer Tee	1	5	168.74	0.37	1 bag
317150-001	2 x 2 x 1 1/4 in. EVERLOC+ LF Brass Tee	-	1	757.50	1.67	1 box
317151-001	2 x 2 x 1 1/2 in. EVERLOC+ LF Brass Tee	-	1	852.75	1.88	1 box



**EVERLOC+ Branch and Run Reducing Tees (A x B x C)**

Article No.	Description	Package Quantity		Unit Weight		Minimum Order
		Bag	Box	g	lb	
104851-001	3/4 x 1/2 x 1/2 in. EVERLOC+ Polymer Tee	10	50	13.61	0.03	1 bag
104852-001	1 x 3/4 x 3/4 in. EVERLOC+ Polymer Tee	5	25	30.84	0.07	1 bag
424989-001	1 1/4 x 1 x 3/4 in. EVERLOC+ LF Brass Tee	-	2	244.68	0.54	1 box
104853-001	1 1/4 x 1 x 1 in. EVERLOC+ Polymer Tee	1	10	56.25	0.12	1 bag
424992-001	1 1/2 x 1 x 3/4 in. EVERLOC+ LF Brass Tee	-	2	324.03	0.71	1 box
317152-001	1 1/2 x 1 x 1 in. EVERLOC+ LF Brass Tee	-	2	371.04	0.82	1 box
425025-001	1 1/2 x 1 1/4 x 3/4 in. EVERLOC+ LF Brass Tee	-	2	365.16	0.81	1 box
317153-001	1 1/2 x 1 1/4 x 1 in. EVERLOC+ LF Brass Tee	-	2	404.60	0.89	1 box
317154-001	1 1/2 x 1 1/4 x 1 1/4 in. EVERLOC+ LF Brass Tee	-	2	462.66	1.02	1 box
424994-001	2 x 1 1/2 x 3/4 in. EVERLOC+ LF Brass Tee	-	1	578.65	1.28	1 box
317156-001	2 x 1 1/2 x 1 in. EVERLOC+ LF Brass Tee	-	1	607.81	1.34	1 box
317161-001	2 x 1 1/2 x 1 1/4 in. EVERLOC+ LF Brass Tee	-	1	666.78	1.47	1 box
317155-001	2 x 1 1/2 x 1 1/2 in. EVERLOC+ LF Brass Tee	-	1	762.03	1.68	1 box

**EVERLOC+ Bullhead Tees (A x B x C)**

Article No.	Description	Package Quantity		Unit Weight		Minimum Order
		Bag	Box	g	lb	
104854-001	1/2 x 1/2 x 3/4 in. EVERLOC+ Polymer Tee	10	50	14.06	0.03	1 bag
104855-001	3/4 x 3/4 x 1 in. EVERLOC+ Polymer Tee	5	25	30.84	0.07	1 bag

**EVERLOC+ 90° Elbows, PEX to PEX**

Article No.	Description	Package Quantity		Unit Weight		Minimum Order
		Bag	Box	g	lb	
104859-001	1/2 x 1/2 in. EVERLOC+ Polymer Elbow	15	75	6.35	0.01	1 bag
317163-001	5/8 x 5/8 in. EVERLOC+ LF Brass Elbow	-	50	67.13	0.15	1 box
104860-001	3/4 x 3/4 in. EVERLOC+ Polymer Elbow	10	50	17.69	0.04	1 bag
104861-001	1 x 1 in. EVERLOC+ Polymer Elbow	5	30	33.11	0.07	1 bag
104862-001	1 1/4 x 1 1/4 in. EVERLOC+ Polymer Elbow	1	10	60.78	0.13	1 bag
104863-001	1 1/2 x 1 1/2 in. EVERLOC+ Polymer Elbow	1	10	102.97	0.23	1 bag
104864-001	2 x 2 in. EVERLOC+ Polymer Elbow	1	5	187.33	0.41	1 bag

**EVERLOC+ 45° Elbows, PEX to PEX**

Article No.	Description	Box Quantity	Unit Weight		Minimum Order
			g	lb	
425021-001	1 1/2 x 1 1/2 in. EVERLOC+ LF Brass 45° Elbow	2	364.48	0.80	1 box
425022-001	2 x 2 in. EVERLOC+ LF Brass 45° Elbow	2	642.83	1.42	1 box

**EVERLOC+ 90° Elbows, PEX to Copper**

Article No.	Description	Box Quantity	Unit Weight g	Unit Weight lb	Minimum Order
317164-001	1/2 x 1/2 in. C Male or 3/8 in. C Female EVERLOC+ LF Brass Elbow	50	37.65	0.08	1 box
317165-001	1/2 x 1/2 in. C Female EVERLOC+ LF Brass Elbow	25	66.28	0.15	1 box
317166-001	3/4 x 3/4 in. C Male EVERLOC+ LF Brass Elbow	25	90.26	0.20	1 box
317167-001	3/4 x 3/4 in. C Female EVERLOC+ LF Brass Elbow	20	115.21	0.25	1 box

**EVERLOC+ 90° Elbows, PEX to FPT/MPT**

Article No.	Description	Box Quantity	Unit Weight g	Unit Weight lb	Minimum Order
317170-001	1/2 x 1/2 in. FPT EVERLOC+ LF Brass Drop Ear Elbow	20	85.73	0.19	1 box
317168-001	1/2 x 1/2 in. MPT EVERLOC+ LF Brass Drop Ear Elbow	20	85.73	0.19	1 box
422006-001	3/4 x 3/4 in. FPT EVERLOC+ LF Brass Drop Ear Elbow	8	158.76	0.35	1 box
425476-001	3/4 x 3/4 in. MPT EVERLOC+ LF Brass Drop Ear Elbow	10	129.85	0.29	1 box
317169-001	3/4 x 3/4 in. MPT EVERLOC+ LF Brass Elbow	10	99.79	0.22	1 box
422007-001	1 x 1 in. FPT EVERLOC+ LF Brass Drop Ear Elbow	5	250.62	0.55	1 box

**EVERLOC+ Adapters, PEX to Copper**

Article No.	Description	Box Quantity	Unit Weight g	Unit Weight lb	Minimum Order
317184-001	1/2 x 1/2 in. C Female EVERLOC+ LF Brass Adapter	35	28.58	0.06	1 box
317185-001	1/2 x 1/2 in. C Male or 3/8 in. C Female EVERLOC+ LF Brass Adapter	75	22.68	0.05	1 box
322835-001	1/2 x 3/4 in. C Female EVERLOC+ LF Brass Adapter	20	44.39	0.06	1 box
325164-001	3/4 x 1/2 in. C Female EVERLOC+ LF Brass Adapter	20	45.30	0.10	1 box
325165-001	3/4 x 1/2 in. C Male EVERLOC+ LF Brass Adapter	20	44.76	0.10	1 box
317189-001	3/4 x 1 in. C Female EVERLOC+ LF Brass Adapter	5	92.99	0.21	1 box
317186-001	3/4 x 3/4 in. C Male EVERLOC+ LF Brass Adapter	30	69.85	0.15	1 box
317187-001	3/4 x 3/4 in. C Female EVERLOC+ LF Brass Adapter	20	95.25	0.21	1 box
317190-001	1 x 1 in. C Male EVERLOC+ LF Brass Adapter	15	115.21	0.25	1 box
317191-001	1 x 1 in. C Female EVERLOC+ LF Brass Adapter	15	142.43	0.31	1 box
317192-001	1 1/4 x 1 1/4 in. C Male EVERLOC+ LF Brass Adapter	10	177.81	0.39	1 box
317193-001	1 1/4 x 1 1/4 in. C Female EVERLOC+ LF Brass Adapter	10	215.46	0.48	1 box
317194-001	1 1/2 x 1 1/2 in. C Male EVERLOC+ LF Brass Adapter	5	282.59	0.62	1 box
317195-001	1 1/2 x 1 1/2 in. C Female EVERLOC+ LF Brass Adapter	5	494.42	1.09	1 box
317196-001	2 x 2 in. C Male EVERLOC+ LF Brass Adapter	2	585.13	1.29	1 box
317197-001	2 x 2 in. C Female EVERLOC+ LF Brass Adapter	2	721.21	1.59	1 box

**EVERLOC+ MPT Adapters, PEX to MPT**

Article No.	Description	Box Quantity	Unit Weight g	Unit Weight lb	Minimum Order
317174-001	3/8 x 1/2 in. MPT EVERLOC+ LF Brass Adapter	40	38.56	0.09	1 box
317171-001	1/2 x 1/2 in. MPT EVERLOC+ LF Brass Adapter	40	44.91	0.10	1 box
317175-001	5/8 x 1/2 in. MPT EVERLOC+ LF Brass Adapter	30	57.15	0.13	1 box
317176-001	5/8 x 3/4 in. MPT or 1/2 in. C Female EVERLOC+ LF Brass Adapter	30	84.82	0.19	1 box
317172-001	3/4 x 3/4 in. MPT EVERLOC+ LF Brass Adapter	20	76.66	0.17	1 box
317177-001	3/4 x 1 in. MPT EVERLOC+ LF Brass Adapter	20	124.74	0.28	1 box
323708-001	1 x 3/4 in. MPT EVERLOC+ LF Brass Adapter	10	108.47	0.24	1 box
317178-001	1 x 1 in. MPT EVERLOC+ LF Brass Adapter	15	148.32	0.33	1 box
317179-001	1 1/4 x 1 1/4 in. MPT EVERLOC+ LF Brass Adapter	10	246.30	0.54	1 box
317180-001	1 1/2 x 1 1/2 in. MPT EVERLOC+ LF Brass Adapter	5	373.76	0.82	1 box
317181-001	2 x 2 in. MPT EVERLOC+ LF Brass Adapter	2	576.06	1.27	1 box

**EVERLOC+ FPT Adapters, PEX to FPT**

Article No.	Description	Box Quantity	Unit Weight g	Unit Weight lb	Minimum Order
317173-001	1/2 x 1/2 in. FPT EVERLOC+ LF Brass Adapter	40	51.26	0.11	1 box
317182-001	3/4 x 3/4 in. FPT EVERLOC+ LF Brass Adapter	20	87.54	0.19	1 box
329227-001	1 x 3/4 in. FPT EVERLOC+ LF Brass Adapter	10	116.01	0.26	1 box
317183-001	1 x 1 in. FPT EVERLOC+ LF Brass Adapter	10	143.34	0.32	1 box

**EVERLOC+ Plugs**

Article No.	Description	Package Bag	Quantity Box	Unit Weight g	Unit Weight lb	Minimum Order
104856-001	1/2 in. EVERLOC+ Polymer Plug	30	150	2.27	0.005	1 bag
317157-001	5/8 in. EVERLOC+ LF Brass Plug	-	60	28.94	0.064	1 box
104857-001	3/4 in. EVERLOC+ Polymer Plug	20	100	6.35	0.014	1 bag
104858-001	1 in. EVERLOC+ Polymer Plug	10	50	11.34	0.025	1 bag
317158-001	1 1/4 in. EVERLOC+ LF Brass Plug	-	20	133.57	0.295	1 box
317159-001	1 1/2 in. EVERLOC+ LF Brass Plug	-	20	214.15	0.472	1 box
317160-001	2 in. EVERLOC+ LF Brass Plug	-	10	388.28	0.856	1 box

**Straight Ball Valves, EVERLOC+ to Copper**

Article No.	Description	Package Box	Quantity Box	Unit Weight g	Unit Weight lb	Minimum Order
418433-001	1/2 in. EVERLOC+ x 1/2 in. C Female Valve	18		120	0.27	1 box
418429-001	3/4 in. EVERLOC+ x 3/4 in. C Female Valve	8		205	0.45	1 box

Make solder connection before connecting RAUPEX pipe.

**Straight Ball Valves, EVERLOC+ to EVERLOC+**

Article No.	Description	Package Quantity Box	Unit Weight g	lb	Minimum Order
418435-001	1/2 x 1/2 in. EVERLOC+ Valve	18	136	0.30	1 box
418434-001	3/4 x 3/4 in. EVERLOC+ Valve	8	215	0.47	1 box

**EVERLOC+ Polymer Closed-end Multi-port Tees**

Article No.	Description	Box Quantity	Unit Weight g	lb	Minimum Order
104867-001	3/4 in. Inlet, (3) 1/2 in. Outlets, EVERLOC+ Polymer Closed-end Multi-port Tee	15	25.40	0.056	1 box
104868-001	3/4 in. Inlet, (4) 1/2 in. Outlets, EVERLOC+ Polymer Closed-end Multi-port Tee	15	32.21	0.071	1 box

**EVERLOC+ Polymer Flow-through Multi-port Tees**

Article No.	Description	Box Quantity	Unit Weight g	lb	Minimum Order
104869-001	3/4 x 3/4 in. Inlets, (2) 1/2 in. Outlets, EVERLOC+ Polymer Flow-through Multi-port Tee	15	24.49	0.054	1 box
104870-001	3/4 x 3/4 in. Inlets, (3) 1/2 in. Outlets, EVERLOC+ Polymer Flow-through Multi-port Tee	15	31.29	0.069	1 box
104871-001	3/4 x 3/4 in. Inlets, (4) 1/2 in. Outlets, EVERLOC+ Polymer Flow-through Multi-port Tee	15	37.19	0.082	1 box

**EVERLOC+ Polymer Elbow Flow-through Multi-port Tees**

Article No.	Description	Box Quantity	Unit Weight g	lb	Minimum Order
104872-001	3/4 x 3/4 in. Inlets, (3) 1/2 in. Outlets, EVERLOC+ Polymer Elbow Flow-through Multi-port Tee	15	35.83	0.079	1 box
104873-001	3/4 x 3/4 in. Inlets, (4) 1/2 in. Outlets, EVERLOC+ Polymer Elbow Flow-through Multi-port Tee	15	42.18	0.093	1 box

**EVERLOC+ LF Brass Closed-end Copper Multi-port Tees**

Article No.	Description	Package Quantity Box	Unit Weight g	lb	Minimum Order
104892-001	1 in. Inlet, (4) 1/2 in. Outlets, EVERLOC+ LF Brass Closed-end Multi-port Tee	10	281.47	0.62	1 box
104893-001	3/4 in. Inlet, (6) 1/2 in. Outlets, EVERLOC+ LF Brass Closed-end Multi-port Tee	10	391.30	0.86	1 box
104894-001	1 in. Inlet, (6) 1/2 in. Outlets, EVERLOC+ LF Brass Closed-end Multi-port Tee	10	392.96	0.87	1 box

Copper multi-port tees are 1 in. Type L copper with EVERLOC+ LF brass fittings brazed into the header and comply with the lead-free requirements of the U.S. Safe Drinking Water Act



EVERLOC+ LF Brass Flow-through Copper Multi-port Tees					
Article No.	Description	Package Quantity Box	Unit Weight g	Unit Weight lb	Minimum Order
104895-001	1 x 3/4 in. Inlets, (4) 1/2 in. Outlets, EVERLOC+ LF Brass Flow-through Multi-port Tee	10	317.89	0.70	1 box
104896-001	1 x 1 in. Inlets, (4) 1/2 in. Outlets, EVERLOC+ LF Brass Flow-through Multi-port Tee	10	341.69	0.75	1 box
104897-001	3/4 x 3/4 in. Inlets, (6) 1/2 in. Outlets, EVERLOC+ LF Brass Flow-through Multi-port Tee	10	375.66	0.83	1 box
104898-001	1 x 3/4 in. Inlets, (6) 1/2 in. Outlets, EVERLOC+ LF Brass Flow-through Multi-port Tee	10	402.64	0.89	1 box

Copper multi-port tees 1 in. Type L copper with EVERLOC+ LF brass fittings brazed into the header and comply with the lead-free requirements of the U.S. Safe Drinking Water Act



EVERLOC+ LF Brass Horizontal Copper Multi-port Tees					
Article No.	Description	Package Quantity Box	Unit Weight g	Unit Weight lb	Minimum Order
104899-001	3/4 x 3/4 x 3/4 in. Inlets, (4) 1/2 in. Outlets, EVERLOC+ LF Brass Horizontal Multi-port Tee	10	368.07	0.81	1 box

Copper multi-port tees are 1 in. Type L copper with EVERLOC+ LF brass fittings brazed into the header and comply with the lead-free requirements of the U.S. Safe Drinking Water Act



EVERLOC+ LF Brass Cut-to-Length Copper Manifolds					
Article No.	Description	Package Quantity Box	Unit Weight kg	Unit Weight lb	Minimum Order
104902-001	1 in. Header, (24) 1/2 in. Outlets, EVERLOC+ LF Brass Cut-to-Length Manifold	5	2.06	4.54	1 box

Copper manifolds are 1 in. Type L copper with EVERLOC+ LF brass fittings brazed into the header and comply with the lead-free requirements of the U.S. Safe Drinking Water Act

# 10. RAUPEX compression nut fittings

RAUPEX split-ring compression nut brass fittings are machined from solid brass stock. Integral fitting/insert design provides positive clamping and sealing action with split compression ring.



RAUPEX MPT Adapters							
Article No.	Description	Package Quantity			Unit Weight		Minimum Order
		Bag	Box	Carton	g	lb	
267517	3/8 in. RAUPEX x 1/2 in. MPT or 1/2 in. C Female (Sweat)	5	35	210	130	0.29	1 bag
260987	1/2 in. RAUPEX x 1/2 in. MPT or 1/2 in. C Female (Sweat)	5	25	150	136	0.30	1 bag
267567	5/8 in. RAUPEX x 1/2 in. MPT or 1/2 in. C Female (Sweat)	5	25	150	135	0.30	1 bag
260357	3/4 in. RAUPEX x 3/4 in. MPT or 1/2 in. C Female (Sweat)	1	15	90	229	0.50	1 bag
260477	1 in. RAUPEX x 1 in. MPT or 3/4 in. C Female (Sweat)	1	10	60	305	0.67	1 box

Dual adapter fittings connect RAUPEX pipe to threaded fitting (first size) or copper pipe (second size) in sizes indicated. Make solder or threaded connection before connecting to RAUPEX pipe.



RAUPEX Copper Adapters							
Article No.	Description	Package Quantity			Unit Weight		Minimum Order
		Bag	Box	Carton	g	lb	
260997	1/2 in. RAUPEX x 1/2 in. C Female (Sweat)	5	30	180	108	0.24	1 bag
260347	3/4 in. RAUPEX x 3/4 in. C Female (Sweat)	1	20	120	166	0.37	1 bag
260467	1 in. RAUPEX x 1 in. C Female (Sweat)	1	10	60	274	0.60	1 bag

Copper adapter fittings connect RAUPEX pipe to copper pipe in sizes indicated. Make solder connection before connecting to RAUPEX pipe.



# 11. Compression nut ball valves



Straight Ball Valves, Compression Nut to Copper							
Article No.	Description	Cv	Package Box	Quantity Carton	Unit Weight g lb		Minimum Order
267527	3/8 in. RAUPEX x 1/2 in. C Female (Sweat) Valve	3.0	12	72	230	0.51	1 each
260277	1/2 in. RAUPEX x 1/2 in. C Female (Sweat) Valve	3.0	12	72	177	0.39	1 each
267587	5/8 in. RAUPEX x 1/2 in. C Female (Sweat) Valve	3.0	12	72	279	0.62	1 each
260367	3/4 in. RAUPEX x 3/4 in. C Female (Sweat) Valve	6.2	6	36	340	0.75	1 each

Solder valves in open position. Make solder connection before connecting to RAUPEX pipe.



Balancing Ball Valves, Compression Nut to Copper							
Article No.	Description	Cv	Package Box	Quantity Carton	Unit Weight g lb		Minimum Order
260847	1/2 in. RAUPEX x 1/2 in. C Female (Sweat) Balancing Valve	0 to 3.0	12	72	350	0.78	1 each

Balancing ball valves combine a balancing screw with a ball valve in one unit. Make solder connection before connecting to RAUPEX pipe.

## 12. Copper manifolds



### Pre-cut Copper Manifolds

Article No.	Description	Package Quantity	Unit Weight		Minimum Order
			kg	lb	
261326	1 in. Copper Manifold, (2) 1/2 in. Outlets	1	0.19	0.43	1
261336	1 in. Copper Manifold, (3) 1/2 in. Outlets	1	0.26	0.58	1
261346	1 in. Copper Manifold, (4) 1/2 in. Outlets	1	0.34	0.75	1

Manifolds are type L copper with open ends in sizes indicated. One end is copper male while the opposite end is flared to copper female (sweat). Manifold pieces may be combined to make longer manifolds. Copper outlets are high-temperature brazed (lead-free) into headers at 2 in. on-center so manifolds cannot be cut to length. 1/2 in. copper outlets are 2 in. long. Use with REHAU fittings and valves to assemble complete manifolds for heating applications.



### Manifold Header Stock

Article No.	Description	Max GPM	Header Size	Outlet Size	Package Quantity	Unit Weight		Minimum Order
						kg	lb	
250810	1 x 1/2 in. Copper Manifold	20	1 in.	1/2 in.	5	2.3	5.1	1
250817	1 x 3/4 in. Copper Manifold	20	1 in.	3/4 in.	4	2.6	5.8	1
250820	1 1/4 x 1/2 in. Copper Manifold	32	1 1/4 in.	1/2 in.	4	3.0	6.5	1
250827	1 1/4 x 3/4 in. Copper Manifold	32	1 1/4 in.	3/4 in.	4	3.2	7.2	1
250829	1 1/2 x 1/2 in. Copper Manifold	44	1 1/2 in.	1/2 in.	3	3.7	8.1	1
250830	1 1/2 x 3/4 in. Copper Manifold	44	1 1/2 in.	3/4 in.	3	4.0	8.7	1
250839	2 x 1/2 in. Copper Manifold	75	2 in.	1/2 in.	2	5.3	11.8	1
250840	2 x 3/4 in. Copper Manifold	75	2 in.	3/4 in.	2	5.1	11.2	1

Manifolds are type L copper with open ends in sizes indicated. Copper outlets are high-temperature brazed (lead-free) into headers. Each manifold is 72 in (180 cm) long with 24 outlets at 3 in. on-center, except the 2 x 1 in. copper manifold (Art. 250850) which has 18 outlets at 4 in. on-center. Manifolds can easily be cut to length. Do not exceed maximum flow rates listed above. Use with REHAU fittings and valves to assemble complete manifolds for heating applications.



### Plastic Manifold Brackets

Article No.	Description	Package Quantity	Unit Weight		Minimum Order
			kg	lb	
261266	Plastic Manifold Brackets	1 Set of 2	0.18	0.40	1 set

Brackets are made of reinforced nylon. A 1.57 in (40 mm) offset allows supply/return manifold clearance. These brackets are used with 1 in. and 1 1/4 in. diameter copper manifolds using supplied flexible spacers.



### End Cap Vent Drains

Article No.	Description	Package Quantity	Unit Weight		Minimum Order
			kg	lb	
250810-ECVD	1 in. End Cap Vent Drain	1	0.16	0.35	1
250820-ECVD*	1 1/4 in. End Cap Vent Drain	1	0.23	0.50	1
250830-ECVD	1 1/2 in. End Cap Vent Drain	1	0.28	0.61	1
250840-ECVD	2 in. End Cap Vent Drain	1	0.42	0.93	1

\* This item is not stocked. Lead times may vary.

End cap vent drain pieces are for use with copper manifolds for radiant and SIM applications. They allow connection of an automatic air vent (1/4 in. NPT) and a drain valve (1/2 in. NPT) to the end of the copper manifold. Use standard 1/4 in. NPT air vent.

Note: The REHAU automatic air vent (Art. 250212) does not work with the end cap vent drains due to different thread sizes. The REHAU automatic air vent is only for use on PRO-BALANCE brass manifolds.

# 13. Installation accessories



## Steel Support Bends

Article No.	Description	Package Quantity		Unit Weight		Minimum Order
		Box	Carton	g	lb	
258408	3/8 and 1/2 in. Steel Support Bend	10	50	50	0.10	1 box
258798	5/8 in. Steel Support Bend	10	50	90	0.19	1 box
257249	3/4 in. Steel Support Bend	10	50	150	0.32	1 box
261153	1 in. Steel Support Bend	5	50	380	0.84	1 box

3/8, 1/2, 5/8 and 3/4 in. steel support bends snap over RAUPEX pipe. 1 in. steel support bends (not shown) slide onto pipe.



## Polymer Support Bends with Screw Hole

Article No.	Description	Box Quantity	Unit Weight		Minimum Order
			g	lb	
266207	3/8 and 1/2 in. Polymer Support Bend	50	40	0.08	1 box
266217*	5/8 in. Polymer Support Bend	50	70	0.16	1 box
266227	3/4 in. Polymer Support Bend	50	70	0.16	1 box
266237	1 in. Polymer Support Bend	50	100	0.22	1 box
266727	1 1/4 in. Polymer Support Bend	50	200	0.44	1 box

\* This item is not stocked. Lead times may vary.



## PVC Bend Guides

Article No.	Description	Box Quantity	Unit Weight		Minimum Order
			g	lb	
266170-001	3/8 and 1/2 in. PVC Bend Guide	40	64	0.14	1 box
266175-001	5/8 and 3/4 in. PVC Bend Guide	30	142	0.31	1 box
266180	1 in. Schedule 40 PVC Bend Guide	20	378	0.83	1 box



## PE Protection Sleeves

Article No.	Description	Hole Size*	Package Quantity	Unit Weight		Minimum Order
				kg	lb	
236107	Protection Sleeve for 3/8 and 1/2 in. Pipe	1 in.	100 ft (30.4 m) coil	1.4	3.1	1 coil
236117	Protection Sleeve for 5/8 and 3/4 in. Pipe	1 1/4 in.	50 ft (15.2 m) coil	1.1	2.4	1 coil
236127	Protection Sleeve for 1 in. Pipe	1 1/2 in.	50 ft (15.2 m) coil	1.7	3.6	1 coil
236137	Protection Sleeve for 1 1/4 in. Pipe	2 in.	150 ft (45.7 m) coil	6.1	13.4	1 coil
236147*	Protection Sleeve for 1 1/2 in. Pipe	2 1/2 in.	100 ft (30.4 m) coil	7.8	17.2	1 coil
236157*	Protection Sleeve for 2 in. Pipe	3 in.	100 ft (30.4 m) coil	8.7	19.2	1 coil

\* This item is not stocked. Lead times may vary.

\*Recommended hole size to be drilled for proper installation.

**RAUCROSS™ Heat Shrink Tubing**

Article No.	Description	Package Quantity	Unit Weight g	Unit Weight lb	Minimum Order
253615	3/8, 1/2, 5/8 and 3/4 in. Heat Shrink - 3.3 ft (1 m)	40 pcs/bag	82	0.18	1 meter
253625	3/4 and 1 in. Heat Shrink - 3.3 ft (1 m)	35 pcs/bag	122	0.27	1 meter
082351-100	1 1/2 and 1 1/4 in. Heat Shrink - 3.3 ft (1 m)	50 m	304	0.67	1 meter

RAUCROSS heat shrink tubing is for sealing around F2080/SDR11 compression-sleeve joints installed in corrosive environments or buried in soil or in a thermal mass.

**RAILFIX™ Fixing Rails**

Article No.	Description	Slot Spacing in.	Package Quantity	Unit Weight g	Unit Weight lb	Minimum Order
259238-2M	1/2 in. RAILFIX Fixing Rail - 6.5 ft (2 m)	1	16 pcs/bundle	480	1.06	1 bundle
266247-002	5/8 in. RAILFIX Fixing Rail - 6.5 ft (2 m)	1	16 pcs/bundle	510	1.12	1 bundle
266257	3/4 in. RAILFIX Fixing Rail - 6.5 ft (2 m)	2	16 pcs/bundle	620	1.36	1 bundle

For installation of RAUPEX pipe in a thermal mass or in a sand bed. Polymer material is pre-drilled for fastening.

**Universal Fixing Rails 3/8 to 3/4 in.**

Article No.	Description	Package Quantity	Unit Weight g	Unit Weight lb	Minimum Order
266407	Universal Fixing Rail for 3/8, 1/2, 5/8 and 3/4 in. RAUPEX - 3.3 ft (1 m)	10 pcs/bundle	205	0.45	1 bundle

Universal fixing rail is molded with alternating small/large tabs to hold pipe in place. The small tabs hold 3/8 and 1/2 in. RAUPEX pipes, while the large tabs hold 5/8 and 3/4 in. RAUPEX pipes. Alternating tabs are spaced at 4 in (10 cm). Flat bottom and pre-drilled holes for mounting. Clips at the end allow pieces to be snapped together to make longer lengths.

**Plastic Holding Pins**

Article No.	Description	Package Quantity Bag	Package Quantity Box	Unit Weight g	Unit Weight lb	Minimum Order
259268	Plastic Holding Pin	500	5000	1.46	0.003	1 bag

Plastic holding pins are used to secure RAILFIX fixing rail and universal fixing rail (Art. 266407) to rigid insulation.

**Galvanized Support Channels**

Article No.	Description	Length m	Length ft	Package Quantity	Unit Weight kg	Unit Weight lb	Minimum Order
225527-001	3/4 in. Steel Support Channel	5.986	19.63	10 pcs/bundle	2.14	4.71	1 bundle
225537-002	1 in. Steel Support Channel	5.956	19.53	10 pcs/bundle	3.27	7.19	1 bundle
225547-002	1 1/4 in. Steel Support Channel	5.942	19.49	8 pcs/bundle	3.91	8.60	1 bundle
225557-002	1 1/2 in. Steel Support Channel	5.926	19.45	6 pcs/bundle	5.59	12.30	1 bundle
225567-002	2 in. Steel Support Channel	5.896	19.33	4 pcs/bundle	6.95	15.29	1 bundle

**Locking Clips**

Article No.	Description	Package Quantity	Unit Weight		Minimum Order
			g	lb	
261496*	3/8 in. Locking Clips	100/bag	4	0.01	1 bag
261556	1/2 in. Locking Clips	100/bag	5	0.01	1 bag
261506*	5/8 in. Locking Clips	100/bag	6	0.01	1 bag
261516	3/4 in. Locking Clips	50/bag	7	0.02	1 bag
261566	1 in. Locking Clips	50/bag	12	0.03	1 bag
261576	1 1/4 in. Locking Clips	50/bag	12	0.03	1 bag
261586	1 1/2 in. Locking Clips	25/bag	18	0.04	1 bag
261596	2 in. Locking Clips	25/bag	30	0.07	1 bag

\* This item is not stocked. Lead times may vary.

**Talon Drive Hooks and Low Profile Talons**

Article No.	Description	Package Quantity	Unit Weight		Minimum Order
			g	lb	
260866	Twin Talon Drive Hooks	100/bag	6	0.01	1 bag
260846*	Low Profile 3/8 in. Talons	100/bag	4	0.01	1 bag
261766	Low Profile 1/2 in. Talons	100/bag	4	0.01	1 bag
261776	Low Profile 5/8 in. and 3/4 in. Talons	50/bag	6	0.01	1 bag
261806	Low Profile 1 in. Talons	50/bag	10	0.02	1 bag

\* This item is not stocked. Lead times may vary.

**Single Nail Clamps**

Article No.	Description	Package Quantity		Unit Weight		Minimum Order
		Bag	Box	g	lb	
261746	Single Nail Clamp for 3/8 and 1/2 in. Pipe	100	1500	4	0.01	1 bag
261756*	Single Nail Clamp for 3/4 in. Pipe	100	1000	5	0.01	1 bag

\* This item is not stocked. Lead times may vary.  
Completely encircles pipe. Pre-installed barbed nail prevents backout.

**Plastic Pipe Clamps**

Article No.	Description	Package Quantity		Unit Weight		Minimum Order
		Bag	Box	g	lb	
282401*	1 1/4 in. Plastic Pipe Clamp	50	800	16	0.04	1 bag
282411*	1 1/2 in. Plastic Pipe Clamp	25	600	20	0.05	1 bag
282421*	2 in. Plastic Pipe Clamp	25	300	32	0.07	1 bag

\* This item is not stocked. Lead times may vary.



Isolating Suspension Clamps						
Article No.	Description	Package Quantity		Unit Weight		Minimum Order
		Bag	Box	g	lb	
282431+	1 1/4 in. Isolating Suspension Clamp	50	800	15	0.03	1 bag
282441+	1 1/2 in. Isolating Suspension Clamp	25	600	28	0.04	1 bag
282451+	2 in. Isolating Suspension Clamp	25	300	23	0.05	1 bag

+ This item is not stocked. Lead times may vary.  
Secures RAUPEX pipe to both wood and metal framework.



Nylon Pipe Ties					
Article No.	Description	Package Quantity	Unit Weight		Minimum Order
			g	lb	
724448	Nylon Pipe Ties	1000/bag	1.43	0.003	1 bag

Non-abrasive nylon pipe ties safely secure pipe directly to slab reinforcing bars or wire mesh. Ties are 8 in. long and rated at 50 lbs tensile strength.



# 14. PEX pipe installation tools



## EVERLOC+ Power Tool Standard Kit

Article No.	Description	Package Quantity	Unit Weight		Minimum Order
			kg	lb	
105107-003	EVERLOC+ Power Tool Standard Kit (1/2, 3/4 and 1 in.)	1	6.8	15	1

The EVERLOC+ power tool standard kit is specifically designed for assembling 1/2, 3/4 and 1 in. EVERLOC+ fittings. The tool kit comes complete with the following:

- EVERLOC+ power tool base unit (Art. 105106-003)
- EVERLOC+ expander adapter QC (Art. 105167-001)
- EVERLOC+ expander heads QC: 1/2 in. (Art. 105074-001), 3/4 in. (Art. 105076-001), 1 in. (Art. 105077-001)
- EVERLOC+ compression jaws (set): 1/2 in. (Art. 105084-001), 3/4 in. (Art. 105088-001), 1 in. (Art. 105091-001)
- (2) DeWALT® 12V Li-ion batteries (DCB127)
- DeWALT® 12V/20V Li-ion battery charger, 120VAC (DCB107)
- RAUCUTTER (Art. 137495)
- Tool case (Art. 318135-003)
- Grease (Art. 224989-001) and cleaning brush (Art. 224988-001)
- Operating instructions



DeWALT® and the DeWALT Logo are trademarks of Stanley Black & Decker, Inc., or an affiliate thereof and are used under license.



Read the instruction manual thoroughly before use and follow all safety precautions - improper use can cause serious personal injury.



## EVERLOC+ Expander Heads

Article No.	Description	Package Quantity	Unit Weight		Minimum Order
			g	lb	
105073-001	3/8 in. EVERLOC+ Expander Head (Quick Change)	1	162	0.36	1 ea
105074-001	1/2 in. EVERLOC+ Expander Head (Quick Change)	1	159	0.35	1 ea
105075-001	5/8 in. EVERLOC+ Expander Head (Quick Change)	1	152	0.34	1 ea
105076-001	3/4 in. EVERLOC+ Expander Head (Quick Change)	1	150	0.33	1 ea
105077-001	1 in. EVERLOC+ Expander Head (Quick Change)	1	181	0.40	1 ea



## EVERLOC+ Compression Jaws

Article No.	Description	Package Quantity	Unit Weight		Minimum Order
			g	lb	
105083-001	3/8 in. EVERLOC+ Compression Jaws (set)	1 set	251	0.55	1 set
105084-001	1/2 in. EVERLOC+ Compression Jaws (set)	1 set	272	0.60	1 set
105087-001	5/8 in. EVERLOC+ Compression Jaws (set)	1 set	288	0.63	1 set
105088-001	3/4 in. EVERLOC+ Compression Jaws (set)	1 set	295	0.65	1 set
105091-001	1 in. EVERLOC+ Compression Jaws (set)	1 set	386	0.85	1 set

**EVERLOC+ XL Power Tool Standard Kit**

Article No.	Description	Package Quantity	Unit Weight kg	Unit Weight lb	Minimum Order
105733-002	EVERLOC+ XL Power Tool Kit (1 1/4, 1 1/2 and 2 in.)	1	19.5	43	1

The EVERLOC+ XL power tool standard kit is specifically designed for assembling 1 1/4, 1 1/2 and 2 in. EVERLOC+ fittings. The tool kit comes complete with the following:

- EVERLOC+ XL power tool base unit (Art. 105994-002)
- EVERLOC+ XL power tool support handle (Art. 105995-001)
- EVERLOC+ XL expander adapter QC (Art. 105744-001)
- EVERLOC+ XL expander heads QC: 1 1/4 in. (Art. 105078-001), 1 1/2 in. (Art. 105079-001), 2 in. (Art. 105080-001)
- EVERLOC+ XL compression jaws (set): 1 1/4 in. (Art. 105094-001), 1 1/2 in. (Art. 105096-001), 2 in. (Art. 105098-001)
- (2) MAKITA® 18V Li-ion batteries (BL1840B)
- MAKITA® 18V Li-ion battery charger, 120VAC (DC18RC)
- Large ratchet cutter (Art. 131558-001)
- Tool case (Art. 321251-001)
- Grease (Art. 224989-001), cleaning brush (Art. 224988-001) and operating instructions



Read the instruction manual thoroughly before use and follow all safety precautions - improper use can cause serious personal injury.

Accessory item sold separately:

- EVERLOC+ XL Power Tool Kit Trolley (Art. 324373-001)

**EVERLOC+ XL Expander Tool Standard Kit**

Article No.	Description	Package Quantity	Unit Weight kg	Unit Weight lb	Minimum Order
106096-002	EVERLOC+ XL Expander Tool Kit (1 1/4, 1 1/2 and 2 in.)	1	5.4	12	1

The EVERLOC+ XL expander tool standard kit is specifically designed for the expansion of 1 1/4, 1 1/2 and 2 in. EVERLOC+ fittings. The tool kit comes complete with the following:

- EVERLOC+ XL expander tool base unit (Art. 105419-002)
- MAKITA® 18V Li-ion battery (BL1840B)
- Tool case (Art. 322285-001)
- Grease (Art. 224989-001) and cleaning brush (Art. 224988-001)
- Operating instructions



Read the instruction manual thoroughly before use and follow all safety precautions - improper use can cause serious personal injury.

**EVERLOC+ XL Expander Heads**

Article No.	Description	Package Quantity	Unit Weight g	Unit Weight lb	Minimum Order
105078-001	1 1/4 in. EVERLOC+ XL Expander Head (Quick Change)	1	590	1.30	1 ea
105079-001	1 1/2 in. EVERLOC+ XL Expander Head (Quick Change)	1	667	1.47	1 ea
105080-001	2 in. EVERLOC+ XL Expander Head (Quick Change)	1	748	1.65	1 ea

**EVERLOC+ XL Compression Jaws**

Article No.	Description	Package Quantity	Unit Weight g	Unit Weight lb	Minimum Order
105094-001	1 1/4 in. EVERLOC+ XL Compression Jaws (set)	1 set	1134	2.50	1 set
105096-001	1 1/2 in. EVERLOC+ XL Compression Jaws (set)	1 set	1179	2.60	1 set
105098-001	2 in. EVERLOC+ XL Compression Jaws (set)	1 set	1270	2.80	1 set

**RAUPEX Cutters**

Article No.	Description	Package Quantity	Unit Weight		Minimum Order
			kg	lb	
137495	RAUCUTTER for up to 1 in. RAUPEX	1	0.17	0.38	1
315242-001	Ratchet Cutter for up to 1 1/2 in. RAUPEX	1	0.41	0.90	1
131558-001	Large Ratchet Cutter for up to 2 in. RAUPEX	1	1.09	2.41	1

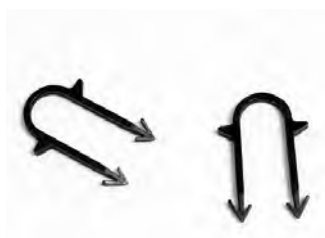
**RAUTACKER 3D Stapler Tools**

Article No.	Description	Package Quantity	Unit Weight		Minimum Order
			kg	lb	
298956-001	RAUTACKER 3D Stapler Tool	1	2.78	6.12	1
298966-001	RAUTACKER 3D 1 3/8 in. Foam Staple	400/box	0.0018	0.004	1 box
340603-001	RAUTACKER 3D 2 in. Foam Staple	400/box	0.0020	0.005	1 box
298196-001	RAUTACKER 3D 2 3/8 in. Foam Staple	400/box	0.0022	0.006	1 box

RAUTACKER 3D foam staples are used when installing RAUPEX pipe on rigid foam board insulation in radiant heating and snow and ice melting applications. Extruded polystyrene foam board is recommended.



RAUTACKER 3D 1 3/8 in. staples work with 3/8, 1/2 and 5/8 in. pipe and with minimum 1 in. (25 mm) thick insulation. RAUTACKER 3D 2 3/8 in. staples are required for 3/4 in. pipe and minimum 1 1/2 in. (38 mm) thick insulation, but also work with 3/8, 1/2 and 5/8 in. pipe. Typically, one staple is required every 3 ft (90 cm) on straight runs of pipe with an additional staple in the middle of bends. Staples are supplied in magazines of 25.

**RAUTACK Foam Staples**

Article No.	Description	Package Quantity	Unit Weight		Minimum Order
			kg	lb	
266187	RAUTACK 1 1/2 in. Foam Staple	300/box	0.002	0.005	1 box
266197	RAUTACK 2 1/4 in. Foam Staple	300/box	0.002	0.005	1 box

For use with RAUPEX pipe to install on rigid foam board insulation (extruded polystyrene is recommended). RAUTACK foam staples work with 3/8, 1/2, 5/8 and 3/4 in. RAUPEX pipes installed in radiant and SIM applications. The 1 1/2 in. staple is for use with minimum 1 in (25 mm) thick insulation. The 2 1/4 in. staple is for use with minimum 1 1/2 in (38 mm) thick insulation. Typically only one staple is required every 3 ft (90 cm) on straight runs of pipe, with one staple in the middle of bends.

Note: For use with previous version of RAUTACKER stapler tool (Art. 266177). Not compatible with RAUTACKER 3D stapler tool (Art. 298956-001).



Screw Clip Ratchet Tools					
Article No.	Description	Package Quantity	Unit Weight kg	Unit Weight lb	Minimum Order
260886	Screw Clip Ratchet Tool	1	0.7	1.6	1
260836	Insulation Screw Clips	1000/bag		0.02	1 bag

The screw clip ratchet tool installs insulation screw clips (Art. 260836) to secure RAUPEX pipe to rigid insulation such as extruded polystyrene or polyurethane. Not recommended for use with expanded polystyrene foam insulation. Can be used with 1/2, 5/8 and 3/4 in. RAUPEX pipe.



Hand Power (HP) Stapler Tools					
Article No.	Description	Package Quantity	Unit Weight kg	Unit Weight lb	Minimum Order
266287	Hand Power (HP) Stapler Tool	1	2.5	5.5	1
266297	Hand Power (HP) 1 1/2 in. Plastic Staple	500/box	0.004	0.009	1 box

For use with RAUPEX pipe to install on wooden subfloor systems. The HP stapler tool installs plastic staples with integral steel nail (Art. 266297) without the use of air power or electricity. HP staples work with 3/8, 1/2 and 5/8 in. RAUPEX pipe installed in radiant applications.



Pneumatic Staplers					
Article No.	Description	Package Quantity	Unit Weight kg	Unit Weight lb	Minimum Order
261016	Pneumatic Stapler	1	5.0	11.0	1
261016-STP	1 1/4 in. Staples for Use With Pneumatic Stapler	10,000/box	3.2	7.0	1 box

Pneumatic Stapler fastens RAUPEX pipe to a wooden subfloor. For use with 3/8 and 1/2 in. RAUPEX pipe, tool comes complete with pogo stick extension arm so it can be used from a standing position. Use only the Senco staples (Art. 261016-STP, P15BAB) listed above or equal; 1 in. crown, 1 1/4 in. leg, 16 gauge chisel point.



#### Staple Clip Guns

Article No.	Description	Package Quantity	Unit Weight		Minimum Order
			kg	lb	
266117	Staple Clip Gun	1	0.58	1.30	1
266137	1/2 in. Flush Mount Staple Clips	100/bag	0.03	0.06	1 bag
266147*	5/8 in. Flush Mount Staple Clips	100/bag	0.03	0.06	1 bag
266157	3/4 in. Flush Mount Staple Clips	100/bag	0.03	0.06	1 bag

\* This item is not stocked. Lead times may vary.

For installation of RAUPEX pipe onto a wood surface. Hand-powered staple clip gun shoots plastic clips with steel staple inserts. Clips hold the pipe away from the surface. All sizes of clips are installed with the same gun.



#### Pressure Testers

Article No.	Description	Package Quantity	Unit Weight		Minimum Order
			kg	lb	
257334	Air Pressure Tester	1	0.3	0.8	1

Air pressure tester threads into the 1 in. isolation valve on a PRO-BALANCE manifold and connects to an air hose (Schrader valve included). Tester includes a pressure gauge that reads from 0 to 200 psi.



#### Infrared Thermometers

Article No.	Description	Package Quantity	Unit Weight		Minimum Order
			g	lb	
261696-001	IR Thermometer	1	240	0.53	1

Non-contact infrared thermometer can be used to measure temperatures of heated or unheated floors, indoor building surfaces, heating system components (including pipes and manifolds). Includes 2 AAA batteries and provides up to 130 hours of continuous use.



#### Turntable Uncoilers

Article No.	Description	Package Quantity	Unit Weight		Minimum Order
			kg	lb	
424865-001	Turntable Uncoiler	1	40.4	89.0	1

Uncoiler has adjustable I.D. to fit multiple sizes of PEXa up to 1,000 ft of 3/4 in. Turntable rotates from horizontal to vertical to fit through doorways and allow for easy jobsite mobility. Assembly required.



#### RAUPEX Horizontal Uncoilers

Article No.	Description	Package Quantity	Unit Weight		Minimum Order
			kg	lb	
286151-002	RAUPEX Horizontal Uncoiler	1	13	28	1

Folding uncoiler is capable of holding RAUPEX coils up to 1 in.

# 15. Electronic controls



## Radiant Floor Heating (RFH) Controls

Article No.	Description	Package Quantity	Unit Weight kg	Unit Weight lb	Minimum Order
236317-001*	Floating Action Mixing Control (360)	1	1.4	3.1	1
236327-001*	Variable Speed Mixing Control (361)	1	1.4	3.0	1

\* Item not stocked. Lead times may vary.

The Floating Action Mixing Control (Art. 236317-001) is an outdoor reset control designed to control the mixed supply water temperature to a radiant system. The floating action mixing control operates a 24 VAC floating action 3 or 4-way mixing valve actuator (Art. 260526, Art. 260566) to regulate the supply water temperature while still protecting a non-condensing boiler against flue gas condensation. This control also provides for boiler operation, primary pump operation and secondary pump operation.

The Variable Speed Mixing Control (Art. 236327-001) is an outdoor reset control designed to control the mixed supply water temperature to a radiant system. The variable speed mixing control operates a variable speed injection pump to regulate the supply water temperature while still protecting the boiler against flue gas condensation. This control also provides for boiler operation, primary pump operation, and secondary pump operation.



## Single-zone SIM Controls Low Voltage

Article No.	Description	Package Quantity	Unit Weight g	Unit Weight lb	Minimum Order
315839-001*	Single-zone SIM Control Low Voltage (654)	1	590	1.3	1
315836-001*	Aerial Snow Sensor (095)	1	180	0.4	1

\* Item not stocked. Lead times may vary.

The Single-zone SIM control (654) operates hydronic equipment to melt snow or ice from any surface including driveways, walkways, patios, business entrances, parking ramps, loading docks, hospital entrances, helipads or car wash bays. The surface temperature for snow melting is controlled automatically to reduce operating energy costs.

The control has an automatic start and stop function when used with the snow/ice sensor (090) (Art. 236357-001). Automatic start with a timed stop is available when used with the aerial snow sensor (095) (Art. 315836-001). The control can operate a dedicated hydronic boiler or a mixing device. Isolation relays are required to operate line voltage pumps.

The aerial snow sensor (095) is an aerial mounted sensor that detects falling snow and allows the Single-zone SIM control (654) (Art. 315839-001) to automatically start the snow melting equipment. System stop is provided by the control's timer or by manual disable. The sensor mounts to a nominal 1/2 in. (16 mm) metal or PVC conduit or pole. The sensor is well suited to adding automatic start to an existing snow melt system. This sensor can only be used with the Single-zone SIM control (654) (Art. 315839-001).





### Snow and Ice Melt (SIM) Controls

Article No.	Description	Package Quantity	Unit Weight		Minimum Order
			kg	lb	
425151-001	Wi-Fi Snow Melting Control w/ Boiler and Mixing Control (670)	1	1.9	4.3	1
298746-002	Wi-Fi Single-zone SIM Controller w/ Pulse Width Modulation (671)	1	1.4	3.1	1

The Wi-Fi Snow Melting Control (670) operates hydronic heating equipment designed to melt snow and/or ice from roads and walkway surfaces. This control works with the 090 Snow/Ice Sensor (Art. 236357-001) or 095 Aerial Snow Sensor (Art. 315836-001) to automatically detect snow or ice and operates a single boiler to supply heat to the slab. Boiler return protection is provided to non-condensing boilers using a mixing valve or variable speed injection mixing pump.

The WiFi Single Zone SIM Controller (671) is designed to operate mechanical equipment to melt snow off an outdoor slab. It is used in hydronic snow melting applications. This product uses a snow/ice detection sensor in order to automatically melt snow using pulse width modulation (PWM) and slab outdoor reset to maintain slab temperature. It is capable of controlling a single boiler, a system pump, and providing a signal when melting is enabled.

Additional control and monitoring can be done with the using the TEKMAR Connect mobile application, available for iOS and Android.



### Electronic Accessories

Article No.	Description	Package Quantity	Unit Weight		Minimum Order
			kg	lb	
236207-001*	070 Outdoor Sensor	1	0.16	0.35	1
236227-001	072 Slab Sensor (20 ft / 6 m cable)	1	0.17	0.37	1
236237-001*	073 Slab Sensor (40 ft / 12 m cable)	1	0.39	0.86	1
236297-001	R003P 24VAC Relay	1	0.13	0.29	1
236357-001	090 Snow/Ice Sensor (65 ft / 19.8 m Jacketed Cable)	1	2.00	4.40	1
236367-001	091 Snow/Ice Sensor Socket	1	0.82	1.80	1

\* This item is not stocked. Lead times may vary.

Electronic accessories can be used with specific mixing controls and/or digital thermostats as replacements and/or additional connections. Refer to mixing control and/or thermostat for compatibility.





# 16. Mixing valves



## Variable Speed Injection Mixing Modules

Article No.	Description	Package Quantity	Unit Weight		Minimum Order
			kg	lb	
281731-001*	Variable Speed Mixing Module	1	8.4	18.5	1

\* This item is not stocked. Lead times may vary.

Used to supply design temperature water to the PRO-BALANCE or HLV manifolds. Capability up to 120,000 Btu/hr. Single compact unit Includes an electronic variable speed injection mixing control, variable speed pump and system circulator with air elimination valve. Extremely versatile, the variable speed mixing module is equipped to be set up as an outdoor reset control, a set point control or a delta T limiting control.



## Modulating Mixing Valves

Article No.	Description	Cv	Package Quantity	Unit Weight		Minimum Order
				kg	lb	
298016-001*	3/4 in. 3-way Modulating Mixing Valve	4.5	1	0.60	1.32	1
298776-001*	1 in. 3-way Modulating Mixing Valve	4.5	1	0.68	1.50	1
298026-001*	1 1/4 in. 4-way Modulating Mixing Valve	17.5	1	1.43	3.15	1

\* This item is not stocked. Lead times may vary.

REHAU modulating mixing valves are a powerful cost effective alternative for zone mixing with such features as outdoor reset, boiler return temperature protection and warm weather shut down (WWSD).

- Maximum operating pressure: 300 psi (2,100 kPa)
- Fluid temperature range: 20 to 240°F (-7 to 115°C) @ 135°F (57°C) ambient
- Adjustable setpoint dial 80 to 180°F (27 to 82°C)
- Selectable 15°F (-9°C) setback
- Optional boiler protection set at 135°F (57°C)



## Thermostatic 3-Way Mixing Valves

Article No.	Size	Cv	Connection	Temperature Range	Package Quantity	Unit Weight		Minimum Order
						kg	lb	
234037	3/4 in.	1.9	NPT	85 to 160°F (19 to 71°C)	1	0.54	1.2	1
234047*	3/4 in.	1.8	Compression	95 to 140°F (35 to 60°C)	1	0.60	1.3	1
260068-001	1 in.	4.1	NPT	95 to 140°F (35 to 60°C)	1	0.91	2.0	1

\* This item is not stocked. Lead times may vary.

Thermostatic mixing valves control supply water temperature for small-sized radiant systems. Sensing element is a wax/copper compound mounted within the valve body. Provides rapid stabilization of supply water temperature. Temperature is adjusted with the knob located at the top of the valve body. For feedback on temperature adjustments place a thermometer (Art. 260957, 260967) downstream of the valve. Compression-type fitting for copper distribution piping or NPT type for threaded pipe. Size valve based on Cv rating (GPM @ 1 psi pressure loss, 2.3 feet headloss).

Specifications:

- Maximum input temperature: 195°F (90°C)
- Regulated output temperature range: as listed
- Maximum working pressure: 145 psi (10 bar; 1 MPa)
- Regulation accuracy: +/- 3.6°F (2°C) at a minimum flow of 0.5 GPM (2 l/m)
- Material: brass body

**Control Motor for Mixing Valves up to 2 in.**

Article No.	Description	Motor Speed	Package Quantity	Unit Weight kg	Unit Weight lb	Minimum Order
260526-001	600 Series Motor With End Switch for Valves up to 2 in.	96 sec	1	0.5	1.2	1

Use with mixing valves 2 in. and smaller for motor operated control. The motor is controlled by REHAU outdoor reset/mixing controls. Operates on 24 Volt AC input provided through these controls. No additional installation kit is required. Built-in end switch is included. Manual override of mixing valve is possible by pulling out and turning the knob. Be sure to adjust the motor speed setting on electronic mixing controls to 96 seconds.

## Specifications:

- Ambient temperature range: 22 to 130°F (-5 to 55°C)
- Torque: 53.10 in. lbs
- Protection type: NEMA 1 (IP 40)
- Supply voltage: 24 VAC, 50 - 60 Hz
- Power consumption: 2 VA (watts) when operating

**Brass Mixing Valves**

Compact 3- or 4-way brass mixing valves are ideal for reliable control of radiant or SIM supply water temperature. Suitable for motor controlled radiant or SIM applications with 600 series control motor (Art. 260526-001). When choosing a 3- or 4-way mixing valve, size according to flow (Cv) and not pipe size, for more accurate mixing. This often means using a valve that is one size smaller than supply/return pipes.

**3-Way Brass Mixing Valves**

Article No.	Description	Cv	Package Quantity	Unit Weight kg	Unit Weight lb	Minimum Order
260106-001	3/4 in. FPT 3-way Brass Mixing Valve	7.3	1	0.5	1.0	1
260116-001	1 in. FPT 3-way Brass Mixing Valve	11.7	1	0.7	1.5	1
260136-001	1 1/4 in. FPT 3-way Brass Mixing Valve	18.7	1	1.0	2.3	1
260146-001*	1 1/2 in. FPT 3-way Brass Mixing Valve	29.3	1	1.68	3.7	1

\* This item is not stocked. Lead times may vary.

## Specifications:

- Maximum operating pressure: 145 psi (10 bar)
- Maximum operating temperature: 230°F (110°C)
- Minimum operating temperature: -15°F (-10°C)
- Maximum mixing differential pressure: 14.5 psi (1 bar)
- Maximum diverting differential pressure: 20 psi (2 bar)
- Maximum torque: 45 lbf-in (5 Nm)

**4-Way Brass Mixing Valves**

Article No.	Description	Cv	Package Quantity	Unit Weight kg	Unit Weight lb	Minimum Order
260236-001	3/4 in. FPT 4-way Brass Mixing Valve	7.3	1	0.5	1.1	1
260246-001	1 in. FPT 4-way Brass Mixing Valve	11.7	1	0.8	1.7	1
260266-001	1 1/4 in. FPT 4-way Brass Mixing Valve	18.7	1	1.2	2.6	1

## Specifications:

- Maximum operating pressure: 145 psi (10 bar)
- Maximum operating temperature: 230°F (110°C)
- Minimum operating temperature: -15°F (-10°C)
- Maximum differential pressure: 14.5 psi (1 bar)
- Maximum torque: 45 lbf-in (5 Nm)

# 17. Hydronic accessories



## Pressure Differential Bypass Valves

Article No.	Description	Package Quantity	Unit Weight kg	Unit Weight lb	Minimum Order
260517	1/2 in. C Female (Sweat) Pressure Bypass Valve	1	0.68	1.5	1
260527	3/4 in. C Female (Sweat) Pressure Bypass Valve	1	0.91	2.0	1
267987*	1 in. MPT Pressure Bypass Valve	1	1.40	3.0	1

\* This item is not stocked. Lead times may vary.

Pressure differential bypass valves divert excess flow when one circulator pump is used with multiple zones, reducing wear on the pump, avoiding noise problems in the control valves and allowing more stable temperature control. Valves are pressure-adjustable. Connections (union ends) are to copper pipe for 1/2 and 3/4 in. valves. The 1 in. valve is supplied with 1 in. MPT union ends.



## Thermometers

Article No.	Description	Package Quantity	Unit Weight kg	Unit Weight lb	Minimum Order
260957	Thermometer with 1/2 in. MPT Well Fitting	1	0.12	0.26	1
260967	Thermometer with 3/4 in. Solder Well Fitting	1	0.13	0.29	1

Thermometers are recommended in radiant/SIM supply and return pipes to monitor fluid temperatures. REHAU immersion well thermometers have a 2 1/2 in. dial, reading from 50 to 250°F (10 to 120°C).



## Combination Temperature/Pressure Gauges

Article No.	Description	Package Quantity	Unit Weight kg	Unit Weight lb	Minimum Order
266417	Combination Temperature/Pressure Gauge	1	0.14	0.30	1

The combination temperature/pressure gauge has a 2 1/2 in. dial reading from 0 to 100 psi and 30 to 240°F (-1 to 115°C). 1/4 in. NPT back-mounted connection for installation in a pipe tee/fitting. The immersion gauge contacts the water directly to give the highest degree of temperature and pressure accuracy. For use in radiant and SIM applications.



## Heat Exchangers

Article No.	Description	Package Quantity	Unit Weight kg	Unit Weight lb	Minimum Order
266477	Heat Exchanger, 3/4 in. MPT Connections (100,000 Btu load)	1	2.0	4.4	1
266487-001	Heat Exchanger, 3/4 in. MPT Connections (150,000 Btu load)	1	2.4	5.3	1

Compact stainless steel heat exchanger for use in radiant and SIM projects. Applications include: radiant systems using a domestic hot water tank as the heat source to separate heating water from drinking water (check local codes), SIM systems using concentration of glycol (antifreeze) different than the rest of the hydronic system. CSA and UL approved. Can provide more than 100,000 Btu/hr, depending on temperatures and flow rates. Has 1/4 - 20 studs for mounting.

