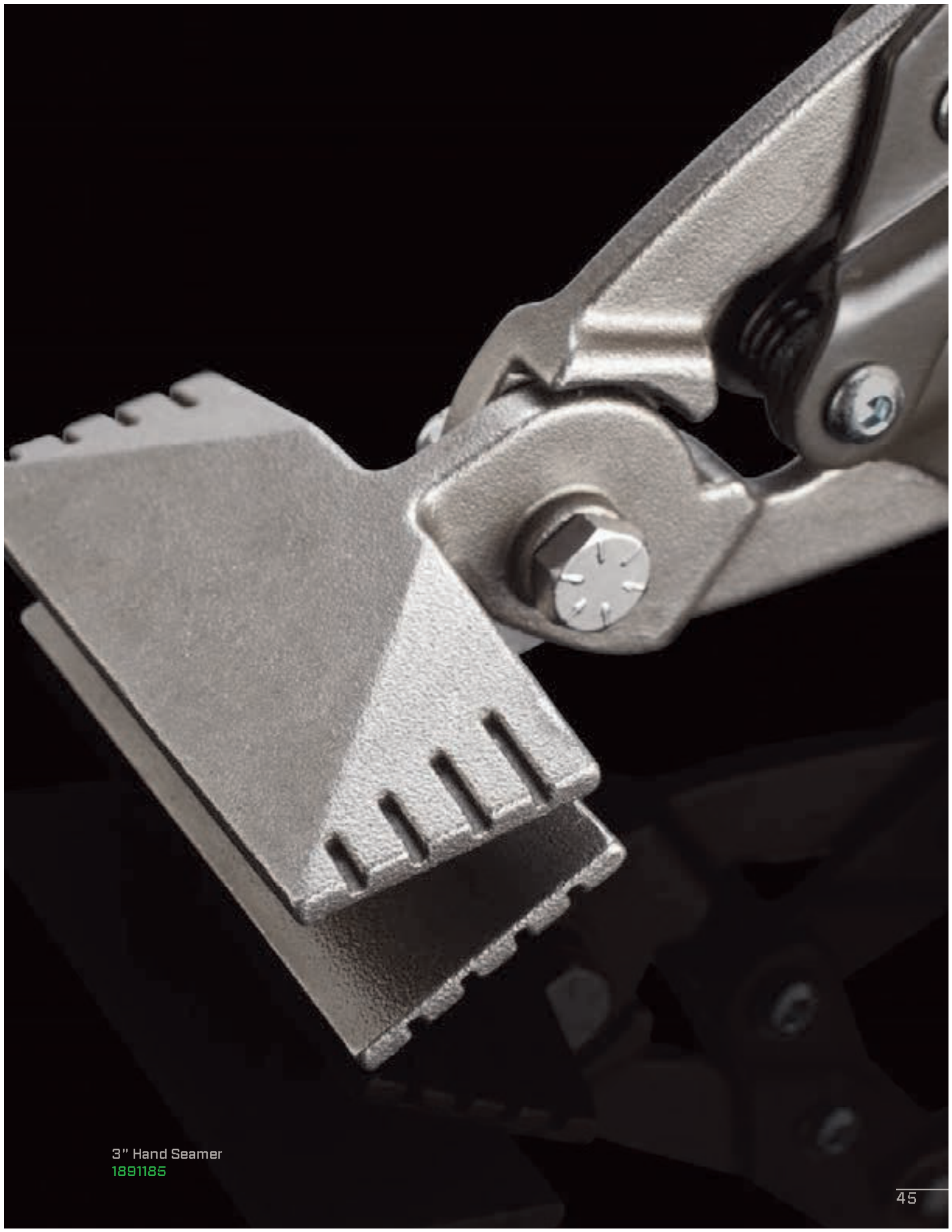




# *Outils pour ferblantiers*



Whether you need to bend, crimp, pierce or cut sheet metal or duct work, our family of Sheet Metal & Duct Tools are up for the challenge.



3" Hand Seamer  
1891185

# AVIATION SNIPS

Sheet metal, duct, stainless steel — it's all no match for the Aviation Snips. With a comfortable overmolded grip and strong, durable blades they'll cut like new, job after job.



**Rugged and Durable**  
High-carbon steel blades and a reinforced chrome silicon spring increase life and durability.



**Quick Identification**  
Color-coded handle inserts and splines make identification simple.



**Comfortable Grip**  
Over-molded handles reduce hand fatigue and won't slip or twist.



Left Cut  
Aviation Snips  
1891133









Right Cut Offset  
Aviation Snips  
1891138



Bulldog Aviation Snip  
1891136

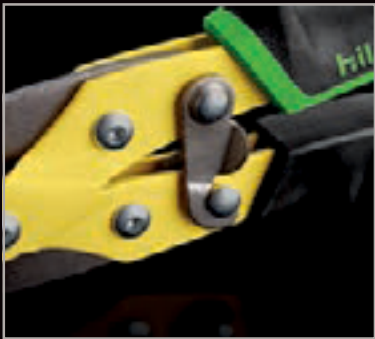
## Product Specifications

Aviation Snips				
Item Numbers		1891133	1891134	1891135
Product Descriptions		SNIPAL	SNIPAR	SNIPAS
Capacity				
CRS	18ga	18ga	18ga	18ga
SS	22ga	22ga	22ga	22ga
Dimensions				
Length	10-3/8"	10-3/8"	10-3/8"	10-3/8"
Width	3-1/2"	3-1/2"	3-1/2"	9-1/2"
Height	7/8"	7/8"	7/8"	9-1/2"
Weight	1.1 lbs.	1.1 lbs.	1.1 lbs.	3.3 lbs.
Cutting Direction				
				3PC Set

Bulldog & Offset Aviation Snips				
Item Numbers		1891136	1891137	1891138
Product Descriptions		SNIPAB	SNIPOL	SNIPOR
Capacity				
CRS		16ga	18ga	18ga
SS		20ga	22ga	22ga
Dimensions				
Length		9-1/2"	10-1/4"	10-1/4"
Width		3-1/2"	3-1/4"	3-1/4"
Height		7/8"	1"	1"
Weight		1.0 lbs.	1.1 lbs.	1.1 lbs.
Cutting Direction				



Color coded handle inserts for quick identification.



Lock for quick and easy storage.

# TINNER SNIPS

From straight to curved cuts in sheet metal and duct, the Tinner Snip cuts it.



## Rugged & Durable

Precision-formed, hot-drop forged steel blades increase life and durability.



## Comfortable Grip

Over-molded handles reduce hand fatigue and won't slip or twist.

12" Tinner Snip  
1891175

10" Tinner Snip  
1891177

10" Duckbill Tinner Snip  
1891178



## Product Specifications

Item Numbers	1891177	1891175	1891178
Product Descriptions	SNIP10T	SNIP12T	SNIPDBT
Sizes	10"	12"	10"
Capacity			
CRS	22ga	20ga	24ga
SS	26ga	22ga	26ga
Dimensions			
Length	10-3/8"	12-3/8"	10-3/8"
Width	4-3/8"	4-3/8"	4-3/8"
Height	1/2"	1/2"	1/2"
Weight	1.1 lbs.	1.5 lbs.	1.0 lbs.
Cutting Direction			
	↓	↓	↓

# ALUMINUM HANDLE SNIP

These Snips will get the job done quick. Their cut length means longer, cleaner cuts and less time for you on the job.



## Rugged & Durable

Lightweight aluminum construction and replaceable blades increase life and durability.



## Less Work

A 3-1/2" cut length requires fewer cuts to complete the job.



## Added Versatility

Use either right or left hand to easily make cuts.

Aluminum Handle Snip  
1891173



## Product Specifications

Item Number	1891173
Product Description	SNIP13AH
Capacity	
CRS	24ga
SS	28ga
Dimensions	
Length	13"
Width	4"
Height	1/2"
Weight	1.2 lbs.
Cutting Direction	
	↓
Replacement Blades	
Item Number	1891174
Description	SNIP13AHRB 13" AL HAND REP BLADES

# PIPE DUCT CUTTER

Show sheet metal who's boss. Whether you're bending, flattening, cutting or joining sheet metal, these tools let you do it accurately and comfortably.



**Rugged and Durable**  
High-carbon steel blades and a reinforced chrome silicon spring increase life and durability.



**Comfortable Grip**  
Over-molded handles reduce hand fatigue and won't slip or twist.



**Pipe Duct Cutter**  
For cutting metal pipe and duct.

# V-NOTCHER



**Rugged and Durable**  
High-carbon steel blades and a reinforced chrome silicon spring increase life and durability.



**Comfortable Grip**  
Over-molded handles reduce hand fatigue and won't slip or twist.



**V-Notcher**  
Cuts V-Shaped notch in sheet metal.

## Product Specifications

Item Number	1891189
Product Description	SMTPDC
Capacity	
CRS	18ga
SS	22ga

Dimensions	
Length	10-1/2"
Width	3"
Height	7/8"
Weight	1.2 lbs.

Pipe Duct Cutter  
1891189



## Product Specifications

Item Number	1891180
Product Description	SMTVN1
Capacity	
CRS	18ga
SS	22ga

Dimensions	
Length	9-1/4"
Width	3"
Height	7/8"
Weight	1.2 lbs.

V-Notcher  
1891180





# SNAP LOCK PUNCH



## Rugged and Durable

Stainless steel blades and a reinforced chrome silicon spring increase life and durability.



## Comfortable Grip

Over-molded handles reduce hand fatigue and won't slip or twist.



## Snap Lock Punch

For joining sheet metal, duct and pipe.

## Product Specifications

Item Number	1891182
Product Description	SMTSLP
Capacity	
CRS	18ga
SS	22ga
<b>Dimensions</b>	
Length	8-7/8"
Width	3"
Height	7/8"
Weight	1.1 lbs.

Snap Lock Punch  
1891182



# HAND CRIMPERS



## Rugged and Durable

High-carbon steel blades and a reinforced chrome silicon spring increase life and durability.



## Comfortable Grip

Over-molded handles reduce hand fatigue and won't slip or twist.



## Hand Crimper

For crimping round metal pipe.

## Product Specifications

Item Numbers	1891186	1891187
Product Descriptions	SMTBC3	SMTBC5
Capacity		
CRS	18ga	18ga
SS	22ga	22ga
<b>Dimensions</b>		
Length	9-3/4"	9-3/4"
Width	3"	3"
Height	7/8"	7/8"
Weight	1.0 lbs.	1.2 lbs.

3 Blade Crimper,  
5 Blade Crimper  
1891186, 1891187



# HAND SEAMERS



**Rugged and Durable**  
Stainless-steel blades and a reinforced chrome silicon spring increase life and durability.



**Comfortable Grip**  
Over-molded handles reduce hand fatigue and won't slip or twist.



**Quick Identification**  
1/4" depth marks on the blades allow for quick bends.



**Seamer**  
For bending and flattening sheet metal.

## Product Specifications

Item Numbers	1891185	1891183	1891184
Product Descriptions	SMTHS3	SMTHS03	SMTHS6
Sizes	3"	3" Offset	6"
Capacity			
CRS	18ga	18ga	18ga
SS	22ga	22ga	22ga
Dimensions			
Length	9-3/4"	8-1/4"	10"
Width	3-1/8"	5"	6"
Height	7/8"	3-1/4"	3-1/2"
Weight	1.5 lbs.	1.4 lbs.	2.2 lbs.



1/4" depth marks on the blades allow for quick bends.



Locking Latch.

3" Offset Hand Seamer  
1891183

6" Hand Seamer  
1891184

3" Hand Seamer  
1891185

# FOLDING TOOLS

From end caps to folds for drive cleats, bend sheet metal to your will with incredible ease and accuracy every time.



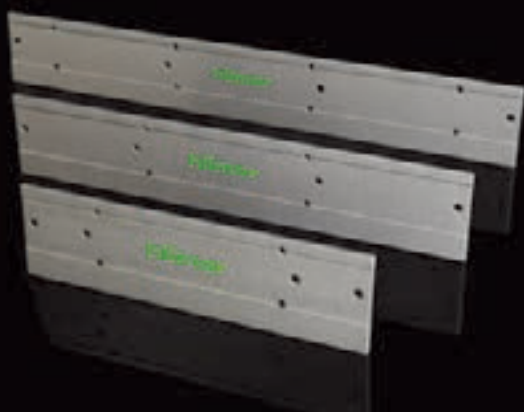
## Folding Tool

Built for both 3/8" (10mm) and 1" (25mm) folds.



## Accurate Folding

Equipped with sight holes for proper depth alignment.



## Product Specifications

Item Numbers	1891146	1890985	1890986
Product Descriptions	SMTFT12	SMTDT18	SMTFT24
Capacity CRS	18ga	18ga	18ga
Dimensions			
Length	12"	18"	24"
Width	3-1/4"	3-1/4"	3-1/4"
Height	1/5"	1/5"	1/5"
Weight	1.4 lbs.	2.1 lbs.	2.8 lbs.

12", 18" & 24" Folding Tools  
1891146, 1890985, 1890986

# DUCT STRETCHER

Now you can pull duct together with one hand. Even large gaps are no match for the hilmor Duct Stretcher.



## Rugged and Durable

An all-aluminum body increases life and durability.



## Small Space Capable

Features a low profile for use in tight spaces.



## Added Versatility

Additional spacing holes allow wheels to be adjusted for use on large gaps.



## Comfortable Grip

A cushion grip for reduced hand fatigue.

## Product Specifications

Item Number	1890987
Product Description	SMTDS
Dimensions	
Length	16"
Width	1/4"
Height	1-1/2"
Weight	11 oz.
Replacement Wheels	
Item Number	1890988
Product Description	SMTDSRW Rep Wheels



Duct Stretcher  
1890987



# HOLE CUTTERS

Cutting holes in sheet metal just got a whole lot easier. The hilmor Hole Cutters allow you to bring some power to what was previously a manual job.



**Rugged and Durable**  
Includes a lightweight aluminum frame, with a milled bit for life and durability.



**Added Versatility**  
Get two-in-one capabilities with both inch and metric scales.



**Perfect Fit**  
Fits into any corded or cordless drill with a 1/4" or larger chuck.

## Product Specifications

Item Numbers	1891191	1891192
Product Descriptions	SMTHC212	SMTHC220
Sizes	2" TO 12"	2" TO 20"

Dimensions		
Length	7"	11"
Width	3"	3"
Height	1"	1"
Weight	1.1 lbs.	1.5 lbs.

Replacement Part	
Item Number	1891193
Description	Drill Bit 1 Pack



2" TO 12" & 2" TO 20" Hole Cutters  
1891191, 1891192

# DUCT SLITTING TOOL

The Duct Slitting Tool is a snip's most trusty companion. You'll see why when you need to pierce, slit or scribe lines in sheet metal.



**Comfortable Grip**  
Over-molded handle reduces hand fatigue and won't slip or twist.



**Extra Versatility**  
Designed to scribe lines, or pierce and enlarge holes in sheet metal.

## Product Specifications

Item Number	1890990
Product Description	SMTDR

Dimensions	
Length	9-3/8"
Width	1-1/4"
Height	1-1/4"
Weight	6.4 oz.



Duct Slitting Tool  
1890990

# DUCT KNIFE

Yeah, it's sharp. Keep this trusty knife by your side for when you need to quickly slice through ductboard.



#### **Rugged and Durable**

A hardened stainless steel blade increases life and durability.



#### **Comfortable Grip**

Over-molded handle reduces hand fatigue and won't slip or twist.



#### **Added Versatility**

Serrated and standard cutting edges made to cut duct board and flexible duct.



#### **Simple Storage**

A puncture-resistant nylon sheath with a belt loop allows for quick and easy storage.

## Product Specifications

Item Number	1891331
-------------	---------

Product Description	SMTDK
---------------------	-------

### Dimensions

Length	11-5/8"
Width	5/8"
Height	1-3/8"
Weight	10 oz.

Duct Knife  
1891331



# CABLE TIE TENSIONING TOOL

Quickly tighten and cut cable ties without leaving sharp edges, so you won't have to worry about scrapes, cuts, or cursing.



#### **Versatility**

Works with both light and heavy-duty nylon cable ties.



#### **Clean Cut**

Easy-to-use cutting lever allows for flush cutting of excess material.

## Product Specifications

Item Number	1891190
-------------	---------

Product Description	SMTDR
---------------------	-------

### Dimensions

Length	7-5/8"
Width	3-7/8"
Height	5/8"
Weight	10 oz.

Cable Tie Tensioning Tool  
1891190

