



CFM
CONTINENTAL FAN

better AIRFLOW by DESIGN™

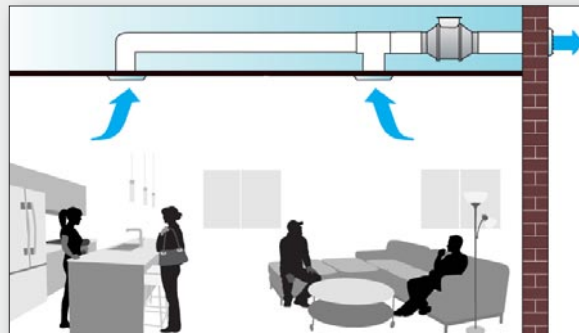
Residential Fans & Air Purifiers



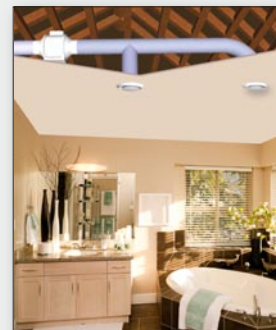
HOME VENTILATION SOLUTIONS

There are many locations in a home where air movement may be necessary:

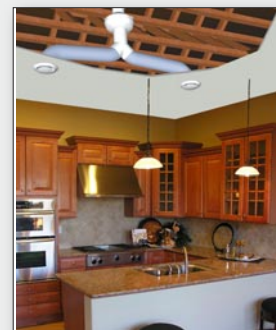
Duct Boosting



Bathroom Exhaust



Kitchen Exhaust



Additional Applications

- Dryer boosting
- Garage ventilation
- Attic ventilation
- Whole house ventilation
- Crawl space ventilation
- General kitchen exhaust
- Basement kitchens, washrooms
- Apartments/townhouses
- Indoor pool ventilation



How much airflow is required?

The following recommendations follow minimum guidelines published by the Home Ventilating Institute (HVI):

Bathroom less than 100 square feet:

- 1 cfm per square foot of floor area. A minimum of 50 cfm is the required ventilation rate.

Bathroom larger than 100 square feet:

- To calculate the proper ventilation rate, add the cfm requirement for each fixture; toilet 50 cfm, shower 50 cfm, bathtub 50 cfm, jetted tub 100 cfm.

Note: For proper sizing, the static pressure (SP) needs to be calculated. For typical applications, you may read from the 0.2" SP column for a selection.

BATHROOM EXHAUST

HOW WELL DOES YOUR BATHROOM EXHAUST FAN PERFORM?

As our homes continue to grow, so do our bathrooms. A lot of time and effort goes into renovating and creating the ideal bathroom. The bathroom has become a space of luxury and relaxation the entire family enjoys. We crave the tranquil spaces, equipped with everything from traditional tubs and showers, to steam baths, whirlpools, and saunas.

To ventilate these new spaces properly and to prevent mold and mildew buildup, multiple venting points and a powerful yet quiet exhaust system are required. Low quality, noisy, ceiling mounted bath fans are not capable of providing this. There is, however, a simple solution. Continental Fan's remote mount in-line duct fans provide the strong, quiet, and effective exhaust required to meet today's bathroom ventilation needs!

AXC, AXP, and MFT fans can be mounted in the attic. If space is limited, select an EXT external mount duct fan, which can be mounted to an exterior wall, or an MBI centrifugal in-line fan, which can be mounted between two studs.

If a traditional in-ceiling fan is your preference, then the high quality AeroFan is an ideal solution. The sleek design of the AeroFan is available in lighted or non-lighted versions.

FAN OPTIONS & ACCESSORIES



EXT
External Mount Duct Fans



AXC
In-Line Duct Fans



MBI
Centrifugal In-Line Fans



AeroFan
Bathroom Fans

AXC BATHROOM VENTILATION KITS

AXC fans are available in a selection of easy-to-install bathroom ventilation kits.

ROOM SIZE	FAN MODEL	AVAILABLE KITS
Up to 100 sq. ft.	AXC100A-ES	RG100-ES; AGK100-ES; RBFK100-ES
Up to 150 sq. ft.	AXC150A-ES	RG150A-ES; AGK150A-ES; DX150A-ES; DXAGK150A-ES
Over 150 sq. ft.	AXC200A-ES	DX200A-ES

NOTE: DX KITS FEATURE TWO VENTS AND MAY BE USED FOR TWO ROOMS.

Adjustable Grille Bathroom Ventilation Kits

Attack moisture at its source. Vary airflow to suit your needs. Adjustable Grille Bathroom Ventilation Kits are available with one or two ventilation points.

RG Kits Include:

AXC Fan, Mounting Brackets, GR Adjustable Grille/Collar, 3 Clamps

- ☐ RG100-ES 147 cfm Fan, 4" Duct
- ☐ RG150A-ES 235 cfm Fan, 6" Duct



DX Kits Include:

AXC Fan, Mounting Brackets, 2 GR Adjustable Grilles/Collars, 7 Clamps, Y-Fitting

- ☐ DX150A-ES 235 cfm Fan, 6" Duct
- ☐ DX200A-ES 368 cfm Fan, 8" Duct



AeroGrille Bathroom Ventilation Kits

The attractive, non-adjustable AeroGrille provides superior ventilation when combined with an AXC in-line duct fan. Kits are available for either one or two ventilation points.

AGK Kits Include:

AXC Fan, Mounting Brackets, AeroGrille AG150-CD, 3 Clamps

- ☐ AGK100-ES 147 cfm Fan, 4" Duct
- ☐ AGK150A-ES 235 cfm Fan, 6" Duct



DXAGK Kit Includes:

AXC Fan, Mounting Brackets, 2 AeroGrilles AG150-CD, 7 Clamps, Y-Fitting

- ☐ DXAGK150A-ES 235 cfm Fan, 6" Duct



RBFK Retrofit Bath Fan Kit

Retrofit a noisy and inefficient bathroom fan with an RBFK Retrofit Bath Fan Kit. Kit includes all necessary hardware for a simple conversion and installation.

RBFK Kit Includes:

AXC Fan, Mounting Brackets, 12.5' of 4" Insulated Flexible Duct, 12' of No. 14 AWG Wire, 2 Reducers (4"-3"), 2 Wire Nuts, Wire Cable Restraint

- ☐ RBFK100-ES 147 cfm Fan, 4" Duct



AXC IN-LINE DUCT FANS

AXC In-Line Duct Fans are designed for residential, commercial and industrial ventilation applications. The quiet and efficient backward-curved impeller is capable of developing significant pressure, and the in-line configuration simplifies installation, saving time and money!



Design Features

- Heavy gauge, drawn steel housing with baked epoxy finish
- 120V operation, other voltages available
- Easy to install - mounting brackets included
- May be mounted in any position
- Fans may be used to supply or exhaust air
- Suitable for air temperatures up to 140 F / 60 C
- Energy efficient - speed controllable (optional solid state speed control)
- Optional pre-wired with 120V power cord (AXC-C)
- Exceptionally quiet and efficient BC centrifugal motorized impeller
- External rotor motor design results in superior motor cooling and durability
- Permanently lubricated ball bearing motor for maintenance-free operation
- Automatic reset thermal overload protection
- Fan and motor are precision balanced for quiet and vibration-free operation
- Easily accessible, external junction box with pre-wired capacitor
- Available to fit duct sizes 4" - 14"; airflow capacities to 1,400 cfm



FAN OPTIONS

Accessories

Pages 22-23

Controls

Pages 20-21

Grilles

Page 19

MODEL	WATTS	RPM	AIRFLOW PERFORMANCE (CFM)									
			0" SP	0.2" SP	0.4" SP	0.6" SP	0.8" SP	1.0" SP	1.2" SP	1.5" SP	2.0" SP	3.0" SP
AXC100A-ES	43.3	2580	147	130	107	82	57	34	11			
AXC100B	83.4	2620	150	140	127	112	94	74	53	23		
AXC125A-ES	44.4	2520	179	150	121	87	49	14				
AXC125B	85.4	2750	183	160	141	122	101	77	51	14		
AXC150A-ES	46.8	2390	235	190	148	97	44					
AXC150B-ES	89.2	2450	308	260	216	175	139	108	81	47		
AXC200A-ES	84.5	2500	368	300	234	184	149	114	70			
AXC200B-ES	188	2550	579	520	453	387	329	282	245	206	154	
AXC250-ES	197	2470	616	550	488	431	379	330	286	227	143	
AXC300A-ES	206	2450	780	700	595	420	330	290	255	210	132	
AXC300B-ES	312	2780	970	910	803	680	559	453	367	273	164	
AXC355A	334	1360	1325	1150	960	790	660	550	430	238		
AXC355B	830	2900	1400	1370	1325	1250	1210	1135	1090	1000	880	675

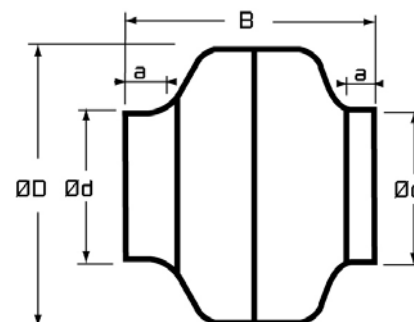
FOR PRE-WIRED WITH 120V POWER CORD, ADD -C TO MODEL.

MODEL	DIMENSIONS IN INCHES*					SHIP WT (LBS)
	D	d	a	B		
AXC100A-ES	9.5	3.9	1.0	8.3	6.5	
AXC100B	9.5	3.9	1.0	8.3	6.5	
AXC125A-ES	9.5	4.8	1.0	8.3	6.5	
AXC125B	9.5	4.8	1.0	8.3	6.5	
AXC150A-ES	9.5	5.8	1.0	8.3	6.5	
AXC150B-ES	13.2	5.8	1.0	9.1	11.0	
AXC200A-ES	13.2	7.8	1.0	9.1	11.0	
AXC200B-ES	13.2	7.8	1.0	9.1	11.0	
AXC250-ES	13.2	9.8	1.0	9.1	11.0	
AXC300A-ES	15.9	11.8	1.2	11.8	18.0	
AXC300B-ES	15.9	11.8	1.2	11.8	20.0	
AXC355A	19.0	14.0	1.5	15.7	26.0	
AXC355B	19.0	14.0	1.5	15.7	31.0	

*DO NOT USE FOR CONSTRUCTION
CONSULT FACTORY FOR CERTIFIED PRINTS

AXC models 100A through 300B are cULus listed
AXC models 355A and 355B are CSA listed to both US and Canadian standards

Products are HVI certified for airflow and power at 0.2" SP. HVI currently does not have a standard in place for testing the sound of a remote mounted fan. Many factors, such as ducting and fan location, can contribute to sound levels. Generally, a remote mounted fan should be quieter than a typical ceiling mounted fan.



SUPPLY & EXHAUST GRILLES

Enhance your bathroom décor with Continental Fan's attractive ventilation grilles. These sleek and attractive grilles compliment any bathroom interior and maximize your fan's performance.



Adjustable Ventilation Grilles

GR adjustable ventilation grilles are designed for ceiling or wall applications. The fully adjustable ventilation grilles are easy to install and adjust. GR grilles are ideal for use with in-line fans.

- | | |
|------------------------------------|--------------------------------------|
| <input type="checkbox"/> GR100 | Adjustable Grille 4", Collar |
| <input type="checkbox"/> GR150 | Adjustable Grille 6", Collar |
| <input type="checkbox"/> GR200 | Adjustable Grille 8", Collar |
| <input type="checkbox"/> GR100-6PK | Adjustable Grille 4", Collar - 6 pcs |
| <input type="checkbox"/> GR150-6PK | Adjustable Grille 6", Collar - 6 pcs |



AeroGrille Ventilation Grilles

AeroGrilles feature quality construction and allow for whisper quiet airflow. Designed for use with either in-line or external mount duct fans, they fit a standard 6" duct.

- | | |
|-----------------------------------|-------------------------------|
| <input type="checkbox"/> AG150 | AeroGrille 6" |
| <input type="checkbox"/> AG150-C | AeroGrille 6", Collar |
| <input type="checkbox"/> AG150-CD | AeroGrille 6", Collar, Damper |



Retro Ventilation Grilles

Square or round retro supply and exhaust grilles are ideal for use with in-line duct fans.

- | | |
|---------------------------------|---|
| <input type="checkbox"/> RTR678 | Round Grille, 6"-7"-8", Stepped Collar |
| <input type="checkbox"/> RTS678 | Square Grille, 6"-7"-8", Stepped Collar |



Decorative Ventilation Grilles

These attractive grilles are designed for use with non-lighted versions of AeroFan bathroom fans.

- | | |
|-----------------------------------|--|
| <input type="checkbox"/> TGRRD90 | Grille TBF90, Round Silver/Chrome |
| <input type="checkbox"/> TGRRD120 | Grille TBF120, Round Silver/Chrome |
| <input type="checkbox"/> TGRSQ90 | Grille TBF90, Square Silver/Chrome |
| <input type="checkbox"/> TGRSQ120 | Grille TBF120, Square Silver/Chrome |
| <input type="checkbox"/> TGRCH90 | Grille TBF90, Rectangular Silver/Chrome |
| <input type="checkbox"/> TGRCH120 | Grille TBF120, Rectangular Silver/Chrome |

DFC DIGITAL FAN CONTROL

Indoor Air Quality (IAQ)

Indoor Air Quality (IAQ) has become an important part of our everyday lives. IAQ affects us in the workplace, schools and more significantly, in our homes. The American Society of Heating, Refrigeration and Air-Conditioning Engineers publishes ASHRAE 62.2, a standard that defines the minimum ventilation requirement and acceptable indoor air quality in low-rise residential buildings.

The DFC Digital Fan Control uses smart technology to address the requirements of ASHRAE 62.2, and it is capable of automatically calculating the airflow required to achieve acceptable indoor air quality. It is designed to provide increased ventilation control that is efficient and affordable. Its unique architecture offers a choice of five distinct modes of operation, allowing the control to be programmed to suit a user's preference and lifestyle. When combined with an AXC In-Line Duct Fan, the DFC Digital Fan Control provides an excellent way of meeting IAQ standards.



Design Features

- Easy to install
- Simple to program
- Convenient display with backlight
- User friendly icons
- Easy to read digital clock
- Automatic Daylight Savings Time function
- ASHRAE 62.2 ventilation standard
- Promotes proper Indoor Air Quality (IAQ)
- Ideal for home & bathroom ventilation
- Available in white or ivory
- Designed for single-speed fan operation
- Five year warranty

Modes of Operation

The DFC Digital Fan Control allows the user to choose from five modes of operation:

1. Ventilation Mode



The Ventilation Mode is designed to achieve ASHRAE 62.2 acceptable indoor air quality. In this mode, the fan control operates on a 60 minute cycle, automatically determining the percentage of run time based on floor space, number of rooms and fan capacity. For example, if the fan is On for 15 minutes, it will be Off for 45 minutes.

2. Customized Cycle Mode



The Customized Cycle Mode allows the user to set the On and Off periods for the fan. Once selected, the control will cycle the fan automatically based on the user's preference.

3. Daily On/Off Mode



The Daily On/Off Mode allows the user to program the fan to turn On and Off once a day, at user defined times.

4. Manual Mode



In the Manual Mode, the control operates the fan like a regular on/off switch. Simply pressing the main button turns the fan On or Off.

5. Countdown Mode



The Countdown Mode allows the fan to operate for any period between 10 and 60 minutes. At the end of the countdown period, fan operation will return to its prior programmed mode.

VENTILATION AIR REQUIREMENTS (CFM)

Floor Area (ft²)	Bedrooms				
	0-1	2-3	4-5	6-7	>7
< 1,500	30	45	60	75	90
1,501 - 3,000	45	60	75	90	105
3,001 - 4,500	60	75	90	105	120
4,501 - 6,000	75	90	105	120	135
6,001 - 7,500	90	105	120	135	150
> 7,500	105	120	135	150	165

Table 4.1A, ASHRAE 62.2-2007

Fan Controls



Variable Speed Controls (Solid State)

VSC3 and VSC9 variable speed controls are designed for AC motors.

- ☐ VSC3 Variable Speed Control - 3 amp - 3 Wire
- ☐ VSC9 Variable Speed Control - 9 amp - 3 Wire



Digital Timers

Time control auto shut off, in preset intervals, allows for proper ventilation and energy savings. The red LED indication light remains lit until the unit shuts off.

- ☐ DT60 Digital Timer 10 - 20 - 30 - 60 Minutes



Spring Wound Timer

Spring wound timer provides energy savings by limiting the "on-time" of the fan, up to 60 minutes. CT timers are easily installed in a standard electrical box. Cover plate not included.

- ☐ CT100V Spring Wound Timer 0 - 1 Hour



On/Off Switch (w/Pilot Light)

The neon light is ON when the switch is in the ON position. 15Amp, 120V Single Pole/ AC Switch. Cover plate not included.

- ☐ PLS120V ON/OFF Switch w/Pilot Light



Thermostat

The TST120V thermostat is suitable for direct connection with any resistance heating element or unit heater.

- ☐ TST120V Line Voltage Thermostat, 120V



Dehumidistat (for Humidity Control)

Wall mounted DHS dehumidistat allows for "problem" areas to be targeted for ventilation. Regulates relative humidity from 20% to 80% RH (8% RH Maximum Differential).

- ☐ DHS120V Dehumidistat



Current Sensor (Solid State)

The CS120VAF current sensor provides a compact, low cost method of detecting AC current. It is ideal for ON/OFF sensing of remote equipment.

- ☐ CS120VAF Current Sensor, 120V, Solid State



Pressure Switch (with Time Delay)

Designed for HVAC or Energy Management applications, PST120V pressure switch is an airflow proving switch with an electronic cycle timing board.

- ☐ PST120V Pressure Switch w/Time Delay



Auto Transformer

TF auto transformer allows for voltage to be regulated to 60V & 90V increments. Channel frame mounting and metal end shells make for a simple installation.

- ☐ TF120V Auto Transformer - 90/60V

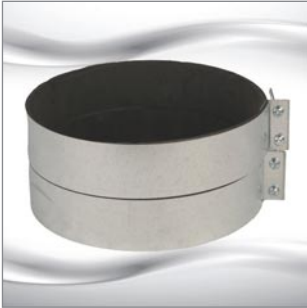
Fan Accessories



Flexible Insulated Duct

UL listed 181 class 1 air duct, wrapped with R4.2 insulation and black polyethylene cover. Ideal for long run applications for HVAC, bathroom and general venting applications.

- | | |
|-----------------------------------|---|
| <input type="checkbox"/> FL100 | Flexible Insulated 4" Duct - 12.5' Length |
| <input type="checkbox"/> FL100-25 | Flexible Insulated 4" Duct - 25' Length |
| <input type="checkbox"/> FL125 | Flexible Insulated 5" Duct - 25' Length |
| <input type="checkbox"/> FL150 | Flexible Insulated 6" Duct - 25' Length |
| <input type="checkbox"/> FL200 | Flexible Insulated 8" Duct - 25' Length |
| <input type="checkbox"/> FL250 | Flexible Insulated 10" Duct - 25' Length |
| <input type="checkbox"/> FL300 | Flexible Insulated 12" Duct - 25' Length |



Mounting Clamps for Rigid Duct

MC mounting clamps are designed for use with rigid duct. The foam neoprene layer creates an air tight and solid installation for in-line duct fans.

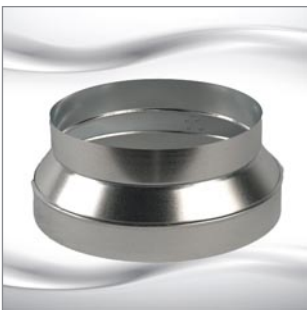
- | | |
|--------------------------------|--|
| <input type="checkbox"/> MC100 | Mounting Clamps for Rigid 4" Duct (2pc) |
| <input type="checkbox"/> MC125 | Mounting Clamps for Rigid 5" Duct (2pc) |
| <input type="checkbox"/> MC150 | Mounting Clamps for Rigid 6" Duct (2pc) |
| <input type="checkbox"/> MC200 | Mounting Clamps for Rigid 8" Duct (2pc) |
| <input type="checkbox"/> MC250 | Mounting Clamps for Rigid 10" Duct (2pc) |
| <input type="checkbox"/> MC300 | Mounting Clamps for Rigid 12" Duct (2pc) |
| <input type="checkbox"/> MC355 | Mounting Clamps for Rigid 14" Duct (2pc) |



Gear Clamps for Flexible Duct

GC stainless steel gear clamps are an easy and effective way to connect an in-line duct fan to flexible insulated duct and other auxiliary pieces.

- | | |
|--------------------------------|--|
| <input type="checkbox"/> GC150 | Gear Clamp for 4" - 6" Duct, Stainless Steel |
| <input type="checkbox"/> GC200 | Gear Clamp for 5.5" - 8.5" Duct, Stainless Steel |



Duct Reducers/Increasesers

DRI duct reducers/increasers are used to transition a duct from a larger or smaller size. Available in 28 Ga.

- | | |
|------------------------------------|--|
| <input type="checkbox"/> DRI-04-03 | Duct Reducer/Increaser, 4" - 3" Duct, Plastic |
| <input type="checkbox"/> DRI-06-04 | Duct Reducer/Increaser, 6" - 4" Duct, Galvanized |
| <input type="checkbox"/> DRI-08-06 | Duct Reducer/Increaser, 8" - 6" Duct, Galvanized |
| <input type="checkbox"/> DRI-10-08 | Duct Reducer/Increaser, 10" - 8" Duct, Galvanized |
| <input type="checkbox"/> DRI-12-10 | Duct Reducer/Increaser, 12" - 10" Duct, Galvanized |
| <input type="checkbox"/> DRI-14-12 | Duct Reducer/Increaser, 14" - 12" Duct, Galvanized |

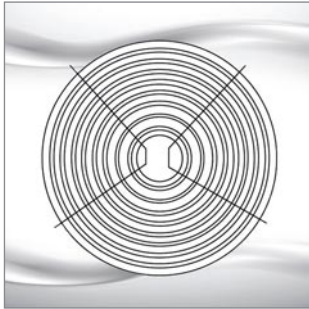


Wye Fittings

WYE fittings provide an airtight branch fitting. The crimp and bead edging ensures an easy connection. Available in 28 Ga.

- | | |
|---------------------------------|--------------------------|
| <input type="checkbox"/> WYE-04 | Y-Fitting, 4"x4"x4" Duct |
| <input type="checkbox"/> WYE-06 | Y-Fitting, 6"x6"x6" Duct |
| <input type="checkbox"/> WYE-08 | Y-Fitting, 8"x8"x8" Duct |

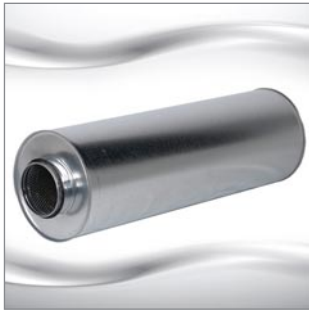
Fan Accessories



Guards

PG guards are used in various applications. Utilize a PG guard as a grille, or mount it directly on the outlet/inlet of a fan to allow for a safe installation.

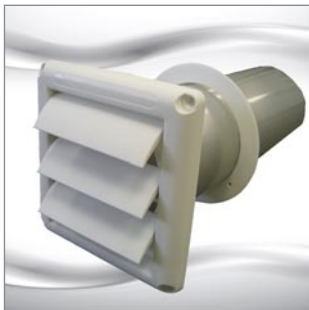
- | | |
|--------------------------------|-----------------|
| <input type="checkbox"/> PG100 | Guard, 4" Duct |
| <input type="checkbox"/> PG125 | Guard, 5" Duct |
| <input type="checkbox"/> PG150 | Guard, 6" Duct |
| <input type="checkbox"/> PG200 | Guard, 8" Duct |
| <input type="checkbox"/> PG250 | Guard, 10" Duct |
| <input type="checkbox"/> PG300 | Guard, 12" Duct |



Sound Attenuators

SA sound attenuators are designed to reduce fan noise traveling along ventilation ducts. They may be used in either supply or exhaust ducts.

- | | |
|--------------------------------|------------------------------|
| <input type="checkbox"/> SA100 | Sound Attenuator, 4" Duct |
| <input type="checkbox"/> SA150 | Sound Attenuator, 6" Duct |
| <input type="checkbox"/> SA200 | Sound Attenuator, 8" Duct |
| <input type="checkbox"/> SA250 | Sound Attenuator, 10" Duct |
| <input type="checkbox"/> SA300 | Sound Attenuator, 12.4" Duct |
| <input type="checkbox"/> SA400 | Sound Attenuator, 16" Duct |



Louvered Shutters (with Tail Piece)

LS louvered shutters are designed as plastic molded vent hoods. The weather resistant louvered construction prevents wind and rain from entering the vent.

- | | |
|-----------------------------------|---------------------------|
| <input type="checkbox"/> LS100-4W | Louvered Shutter, 4" Duct |
| <input type="checkbox"/> LS150-6W | Louvered Shutter, 6" Duct |



Roof & Wall Caps

Black plastic roof caps include damper, screen, and collar. Aluminum wall caps include spring controlled damper.

- | | |
|--------------------------------|--|
| <input type="checkbox"/> RC100 | Roof Cap, 4" Duct, Black Plastic |
| <input type="checkbox"/> RC150 | Roof Cap, 6" Duct, Black Plastic |
| <input type="checkbox"/> RC200 | Roof Cap, 8" Duct, Black Plastic |
| <input type="checkbox"/> WC100 | Wall Cap, 4" Duct, Aluminum, Reducer 4" - 3" |
| <input type="checkbox"/> WC150 | Wall Cap, 6" Duct, Aluminum |
| <input type="checkbox"/> WC200 | Wall Cap, 8" Duct, Aluminum |



Lint Trap

LT100 lint traps offer a simple solution for reducing maintenance associated with dryer vents. The one-piece door with screen slides easily into place, without having to fuss with flimsy springs or clips. Its versatile design allows for either wall or ceiling mount installation.

- | | |
|--------------------------------|------------------------------|
| <input type="checkbox"/> LT100 | Lint Trap for Dryer, 4" Duct |
|--------------------------------|------------------------------|

BDD BACKDRAFT DAMPERS



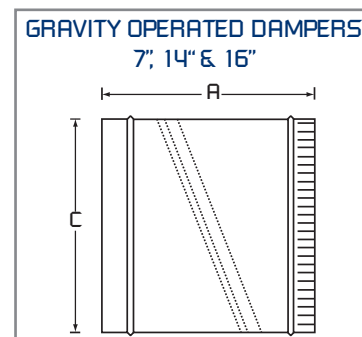
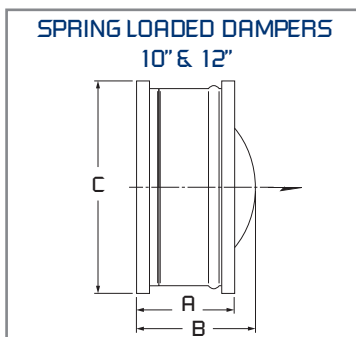
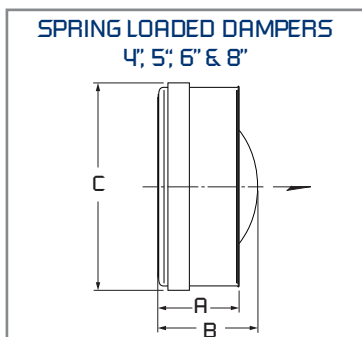
Spring Loaded Dampers

- Neoprene damper seal to minimize air leakage
- Steel housing, aluminum butterfly damper blades
- Gasket designed to withstand temperatures from -22 F to 180 F
- Requires from 0.04 to 0.08 in. wg pressure to open
- Simple installation in any position - entire assembly inserts into duct
- Exterior foam gasket assures a tight seal against duct
- 4", 5", 6" & 8" sizes include stamped metal sleeve with center pin / post designs
- 10" & 12" sizes include rolled metal sleeve with center post design



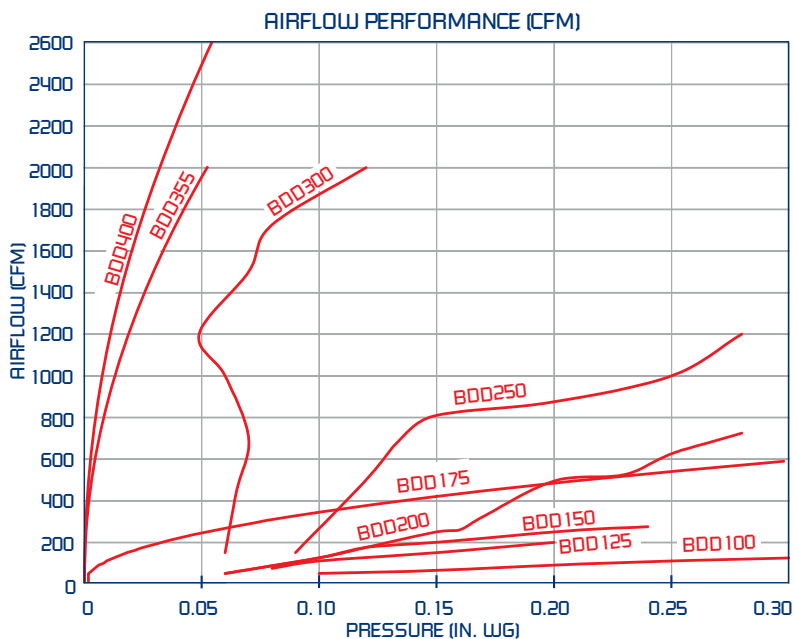
Gravity Operated Dampers

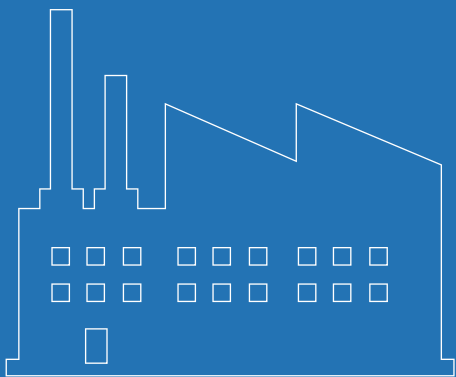
- Low air leakage design
- Galvanized steel housing, aluminum butterfly damper blades
- Gravity operated closure
- Install in horizontal or vertical (upblast only) position
- Suitable for supply or exhaust applications
- Available in 7", 14" & 16" sizes



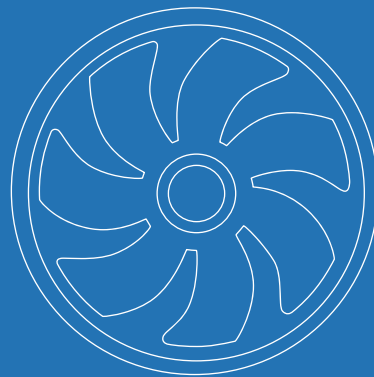
	DIMENSIONS IN INCHES*			
MODEL	A	B	C (Nominal)	Gauge
SPRING LOADED DAMPERS				
BDD100	1.8	2.0	4	20
BDD125	2.0	2.5	5	20
BDD150	2.5	3.0	6	20
BDD200	2.8	3.8	8	20
BDD250	4.8	6.0	10	20
BDD300	6.3	6.8	12	20
GRAVITY OPERATED DAMPERS				
BDD175	7.0	-	7	28
BDD355	12.0	-	14	24
BDD400	14.0	-	16	22

***DO NOT USE FOR CONSTRUCTION
CONSULT FACTORY FOR CERTIFIED PRINTS**





Industrial Fans & Blowers



OEM Solutions & Custom Fans



Commercial Fans & Dampers



Residential Fans & Air Purifiers



Residential Fans & Air Purifiers

Continental Fan Manufacturing Inc.
203 Eggert Road
Buffalo, New York 14215

Continental Fan Canada Inc.
12-205 Matheson Blvd E
Mississauga, Ontario L4Z 3E3

Continental Fan Manufacturing Inc.
6274 Executive Blvd.
Dayton, Ohio 45424

1-800-779-4021 • www.continentalfan.com

Distributed by:

Residential 1510